

THE RECIPIENTS OF OUR GRANTS ARE VASTLY DIFFERENT BUT THEY SHARE A COMMON FACTOR – THEY EACH MAKE A LASTING DIFFERENCE TO THE NEW ZEALAND COMMUNITIES THEY SERVE



**SIMON WHYTE**  
Chairman



## By providing a safe pair of hands, investment into the industry and strong relationships across the board, **The Lion Foundation has been able to add value to all aspects of the Charitable Gaming sector.**

It has been another strong year for The Lion Foundation and I'm pleased to report that thanks to our loyal venue operators and outstanding staff we returned over \$35.2m to the community in the form of 3,543 applications.

I purposely use the word 'returned' because all Class 4 funding originates from and therefore belongs to the community. The team at The Lion Foundation believe that this should be a fundamental principle for the Class 4 Gaming Sector and is why we will continue to return funds locally in line with our regionalisation and localisation strategies.

A second fundamental principle promoted by The Lion Foundation is that the funding should be available and accessible to all eligible community groups, not the privileged few. Having a broad and inclusive funding model should be the starting point for any Charitable Gaming Society that places the community at the heart of decision making.

As is the case every year, the demand for funding continues to grow. Making sure we return community funding to the right places is a responsibility seriously accepted by my fellow Trustees as well as the members of The Lion Foundation's Regional Grants Committees. Thank you to all of these people for committing your time, expertise, knowledge and due diligence to our local communities.

It has been particularly pleasing to see The Lion Foundation grow over the last three years following a raft of positive changes that have resulted in achieving very high levels of efficiency and effectiveness. In a challenging environment we have taken the view that there is never a wrong time to do the right thing. This approach not only protects our venue operators in a highly regulated space, it also provides stability and leadership. By providing a safe pair of hands, investment

into the industry and strong relationships across the board, The Lion Foundation has been able to add value to all aspects of the Charitable Gaming sector.

On the political front there were positive signals in the form of an industry-wide review. However, this appears to have lost some momentum and focus.

The 750+ submissions received by the Department during the consultation process clearly shows that the community has plenty to say on the future of community funding, and so they should. Figures show that 35% of all philanthropic spend in New Zealand comes from Class 4 Gaming, but perhaps the most glaring statistic is that as a sector we invest more into amateur community sport than the New Zealand Government.

Despite its slow progress The Lion Foundation maintains faith that the review will result in some level of change following the election. The reality is that there's an opportunity to find tens of millions of dollars more community funding every year, which is something that just can't be ignored. There is also an opportunity to achieve outcomes better aligned to the expectations of the New Zealand community. The Hon Peter Dunne, Minister of Internal Affairs, was clear that he wanted a "low cost regulatory framework that ensures sustainable fundraising, which benefits the NZ community and minimises harm." Let's hope that the Department's officials show the necessary leadership to follow

through on the Minister's direction. The Lion Foundation supports any reform that maximises the return to the community, minimises harm and supports responsible operators.

With growth comes the increased responsibility to carefully manage any potential harm. In this regard

I want to recognise the hard work carried out by The Lion Foundation Operations and Compliance Teams to protect those affected by problem gambling as well as our Venue Operators. We take our obligations in this space seriously and we will continue to work with the necessary partners to safeguard the community.

**The Lion Foundation supports any reform that maximises the return to the community, minimises harm and supports responsible operators.**

Finally, I'd like to once again thank everyone that made the \$35.2m worth of grants possible. Thank you to the venue operators for their hard work and partnership with The Lion Foundation. Thank you to The Lion Foundation staff for everything you've done over the last 12 months. Thank you to our Regional Grants Committees and Licensing Trusts for maximising the impact of every grant. And of course, thank you to my fellow Trustees for their ongoing support and leadership. The Lion Foundation will continue to take a strategic approach to leading the sector and ensuring the sustainability of the community funding model.



## \$35.2M in grants to communities across NZ this year





*Meeade*

**MURRAY READE**  
Chief Executive



All of us at The Lion Foundation are very grateful to the venue operators we have relationships with for allowing us to support them.

Our own efforts at distributing rewards fairly will complement the DIA regulation review

It has been a positive year for The Lion Foundation. We have maintained some very good partnerships with our venue operators and developed some new ones. All of us at The Lion Foundation are very grateful to the venue operators we have relationships with for allowing us to support them. The new commissioned-based venue payment structure was recently introduced and I would like to thank all of our venue operators for their tolerance and support in introducing this new structure.

We have continued to focus on improving how we distribute community funds. In this regard the establishment of the Regional Grants Committees has allowed us to more closely connect with the

communities we support to ensure the best possible effect of the funds we distribute. The implementation of regional grants forums has been an important part of educating recipients about the grants application process, and also about where and how the funds are generated.

The Department of Internal Affairs has undertaken a review of the Class 4 gambling sector with a view to ensuring, among other things, appropriate harm minimisation measures, sustainable community funding without increasing gaming, and more cost effective regulation. The review is due to be presented to Cabinet this year. We support it and hope that an appropriate solution is developed to meet the objectives of the review.

We believe there is certainly potential to optimise the performance of the sector, for the communities we all support, importantly the venue operators, and the Department of Internal Affairs to support harm minimisation and regulate the sector.

I would like to finish off by saying thanks to everyone at The Lion Foundation for all their hard work, to the groups we support for making a difference in your communities, to the DIA for their efforts in trying to improve the sector, and to our venue operators, without whom there would be no funding.



## The Lion Foundation's Regional Grants Committees

The Lion Foundation literally helps hundreds of thousands of Kiwis do great things in their communities.



*The Lion Foundation will continue to take a strategic approach to leading the sector and ensuring the sustainability of the community funding model.*

## GRANTS

### NATIONAL

Arts Foundation of NZ Inc	\$50,000
Athletics NZ Inc	\$25,000
Autism NZ Inc	\$25,000
Barnardos NZ	\$100,000
Basketball NZ Inc	\$150,000
Blue Light Ventures Inc - NZ	\$100,000
Bowls NZ Inc	\$25,000
Coeliac NZ Inc	\$19,410
Graeme Dingle Foundation	\$180,000
Halberg Disability Sport Foundation	\$50,000
NZ Badminton Fed Inc	\$25,000
NZ Endometriosis Foundation Charitable Trust	\$75,000
NZ Football Inc	\$200,000
NZ Hockey Fed Inc	\$110,000
NZ Olympic Committee Inc	\$50,000
NZ Rowing Assn Inc	\$25,000
NZ Rugby League Inc	\$75,000
Netball NZ Inc	\$700,000
Paralympics NZ Inc	\$50,000
Parent to Parent NZ Inc	\$25,000
Parenting Place Inc	\$50,000
Play It Strange Trust	\$200,000
Prostate Cancer Foundation of NZ Inc	\$45,527
Royal NZ Ballet	\$80,000
Sir Peter Blake Trust Inc	\$25,000
Special Olympics NZ	\$50,000
Spinal Cord Soc NZ Inc	\$25,000
Spirit of Adventure Trust	\$50,000
Surf Life Saving NZ Inc	\$200,000
Swimming NZ Inc	\$25,000
Tennis NZ Inc	\$80,000
Touch NZ Inc	\$50,000
Triathlon NZ Inc	\$25,000
Young Enterprise Trust	\$400,000

## Northern

### AUCKLAND

*The Lion Foundation acknowledges the outstanding contribution of the owners and staff at the following venues which generated the funds which have led to these published grants being made: **Snooker World, F Bar, Hops N Hooves, Enjoy Korean Restaurant, Club Rio, QF Tavern, Strand Tavern, Kings Arms Tavern, The Landing Seafood Restaurant & Bar.***

African Film Festival NZ	\$6,000
Age Concern Auckland Inc	\$50,000
Akarana Marine Sports Trust	\$50,000
Akarana Zone of NZ Rugby League Inc	\$15,000
Alliance Francaise d'Auckland Inc	\$5,000
Alzheimers Auckland Charitable Trust	\$10,000
Amitabha Hospice Trust	\$8,000
Anxiety NZ Trust	\$10,000
Asia NZ Foundation	\$10,000
Auckland & District Pipe Band Inc	\$2,400
Auckland Asthma Soc Inc	\$15,000
Auckland Basketball Services Ltd	\$40,000
Auckland Childrens Christmas Parade Trust Inc	\$20,000
Auckland Choral Soc Inc	\$20,000
Auckland City Athletics Club Inc	\$2,000
Auckland City Mission Inc	\$28,000
Auckland Coastguard Inc	\$20,000
Auckland Council Art Gallery	\$7,000
Auckland Cricket Assn Inc	\$80,000
Auckland Curling Club Inc	\$1,039
Auckland Deaf Soc Inc	\$4,575
Auckland District Kidney Soc Inc	\$10,000
Auckland Diving Community Trust	\$5,000
Auckland Down Syndrome Assn Inc	\$2,025
Auckland Festival of Photography Trust	\$4,000
Auckland Festival Trust	\$30,000
Auckland Girls Grammar School	\$3,000
Auckland Grammar School	\$5,000
Auckland Justices of the Peace Assn Inc	\$4,000
Auckland Kids Achievement Trust	\$30,000
Auckland Music Theatre Inc	\$5,000
Auckland Netball Centre Inc	\$60,000
Auckland Normal Intermediate School	\$1,700

Auckland Observatory & Planetarium Trust	\$50,000
Auckland Performing Arts Centre at Western Springs Inc	\$130,000
Auckland Philharmonia Orchestra	\$20,000
Auckland Regional Migrant Services Charitable Trust	\$8,000
Auckland Rescue Helicopter Trust	\$15,000
Auckland Rowing Assn Inc	\$50,000
Auckland Rowing Club	\$8,000
Auckland Rugby League Inc	\$70,000
Auckland Rugby League Referees Assn Inc	\$1,666
Auckland Secondary Schools Heads Assn Inc	\$5,000
Auckland Speech & Drama Competitions Soc Inc	\$4,000
Auckland Sport	\$25,000
Auckland Sport Climbing Club Inc	\$1,500
Auckland Stock & Saloon Car Club	\$15,000
Auckland Syro Malabar Catholic Mission	\$4,000
Auckland Tamil Sports Club	\$3,000
Auckland Theatre Company Ltd	\$40,000
Auckland University Rugby Football Club Inc	\$5,000
Auckland Urban Mission Inc	\$6,400
Auckland Womens Centre Inc	\$10,000
Auckland Writers & Readers Festival Charitable Trust	\$10,000
Avondale College Early Childhood Education Centre	\$4,784
Bach Musica NZ Inc	\$1,500
Basement Theatre Trust	\$7,000
Bayfield Primary School	\$750
Big Buddy Mentoring Trust	\$10,000
Bowls NZ Inc	\$5,000
Brothers in Arms Charitable Trust	\$10,000
Camp Quality NZ Inc	\$3,000
Campus Link Foundation	\$40,000
Cancer Soc of NZ Auckland Northern Division Inc	\$8,000
Carlton Croquet Club Inc	\$2,000
Central Auckland Parents Centre Inc	\$5,000
Central City Baseball Club Inc	\$4,000
Central United Football Club Inc	\$397
Centre City Music Theatre Soc Inc	\$4,000
Chamber Music NZ Trust Board	\$8,000
Charlotte Museum Trust	\$1,800
Child Cancer Foundation Inc	\$10,000
Children's Bible Ministries Inc	\$10,000
Childrens International Summer Villages (NZ) Inc	\$4,000
Chinese Senior Citizens Health Exercise Group Inc	\$2,600

**GRANT N° 9016288**

Young Enterprise Trust

## Roll over Richard Branson, there's a new class coming through

The Young Enterprise Trust believes that helping students to unleash their entrepreneurial spirit will be vital in preparing them for a world where the career expectations of the past no longer apply. Through a combination of teachers and members of the business community they give students the chance to succeed or fail in a supportive environment that's both authentic and relevant. Over 3,000 secondary school pupils a year learn these important skills, along with financial literacy, as a complementary resource to their more usual academic studies.





Christians Against Poverty NZ	\$10,000	Marist Brothers Old Boys Rugby Club Auckland Inc	\$2,538	Pakuranga Athletics Charitable Trust	\$8,000
Clubs of Auckland Inc	\$10,000	Marist Catholic School - Herne Bay	\$4,000	Pakuranga College	\$40,000
Coastguard Northern Region Inc	\$26,000	Marshall Laing School	\$5,000	Panacea Arts Charitable Trust	\$15,000
Cochlear Implant Foundation of NZ Inc	\$90,000	Maungarei Community Christian Trust	\$25,000	Panmure Bridge School	\$8,107
College Rifles Netball Club	\$1,400	Maungawhau Playcentre	\$14,500	Panmure Business Assn	\$4,000
College Rifles Rugby Union Football & Sports Club Inc	\$7,500	May Road School	\$5,000	Parachute Arts Trust	\$40,000
Communicare - CMA (Auckland) Inc	\$30,000	Mercy Hospice - Auckland	\$50,000	Parkinsons Auckland	\$15,000
Community Education Trust Auckland	\$8,000	Middlemore Foundation for Health Innovation	\$80,000	Parnell Community Trust Inc	\$780
Condor Rugby Football Club Inc	\$6,250	Migrant Action Trust	\$5,000	Parnell Lawn Tennis Club Inc	\$25,000
Connected Media Charitable Trust	\$5,000	Millennium 21 Trust	\$3,400	Pasadena Intermediate School	\$2,853
Counties Manukau Orienteering Club Inc	\$2,500	Mobility Assistance Dogs Trust	\$15,000	Pasifika Festival Villages Trust	\$9,767
Cystic Fibrosis Assn of NZ - Auckland Branch	\$14,364	Mothers Helpers	\$1,000	People First NZ Inc - Northern Region	\$2,840
Dance Therapy NZ	\$9,000	Motutapu Island Restoration Trust	\$10,000	Pipikids International Film & Media Festival	\$2,500
Diocese of Auckland - St Matthew in the City	\$5,000	Mountains to Sea Conservation Trust	\$980	Polyfest Trust	\$10,000
Discovery Foundation Inc	\$8,000	Mt Albert Ponsonby AFC Inc	\$3,106	Pompallier Lawn Tennis Club Inc	\$2,784
Domain Concerts Trust Board	\$20,000	Mt Albert Primary School	\$7,000	Ponsonby United Rugby League Football & Sports Club Inc	\$2,500
Dunholme Lawn Tennis Club Inc	\$10,000	Mt Albert Ramblers Softball Club Inc	\$4,500	Project Litefoot Trust	\$11,444
ECPAT Child Alert Trust	\$10,000	Mt Albert Tennis Club Inc	\$3,000	Project Restore NZ Inc	\$10,000
East Auckland Home & Budget Service Charitable Trust	\$10,000	Mt Eden Swimming Club Inc	\$3,000	Pt Chevalier Sailing Club Inc	\$5,000
Edendale Tennis Club Inc	\$3,000	Mt Richmond Special School	\$20,000	Pt England School	\$5,000
Ellerslie Assn Football Club Inc	\$4,000	Mt Roskill Primary School	\$4,000	Q Theatre Trust	\$20,000
Ellerslie Community Arts Trust	\$2,000	Mt Wellington Community Garden	\$1,300	Rape Crisis Auckland Inc	\$25,000
English Language Partners Auckland Central Inc	\$5,000	Mt Wellington Roller Sports Club Inc	\$2,000	Raukauri Music Therapy Trust	\$32,000
Ensemble Polymnia Trust	\$4,000	Mt Wellington Rugby Football Club	\$3,000	Road Safety Education Ltd	\$10,000
Environmental White Water Park Trust	\$35,000	Museum of Transport and Technology	\$30,000	Rocky Nook Bowls Inc	\$2,000
Epilepsy Assn of NZ Inc	\$2,000	Music Assn of Auckland Inc	\$2,500	Ronald McDonald House Charities NZ Trust	\$29,000
Essentially Men Education Trust	\$10,000	NZ Barok Inc	\$1,000	Roopa Aur Aap Charitable Trust	\$5,000
Feed the Need Trust	\$10,000	NZ Council for Sailing for the Blind and Vision Impaired Inc	\$20,000	Roskill Eden Hockey Club Inc	\$2,000
First Foundation	\$15,000	NZ Dance Advancement Trust Inc	\$10,000	Royal Akarana Yacht Club Inc	\$8,000
Get Kids Active Charitable Trust	\$8,000	NZ Dance Festival Trust	\$7,550	Royal NZ Plunket Soc Inc	\$45,000
Glen Taylor School	\$10,000	NZ Federation of Multicultural Councils Inc	\$11,000	Royal NZ Yacht Squadron Inc	\$40,000
Glendowie College	\$5,000	NZ Fiji Football Inc	\$7,800	Royal Oak Intermediate School	\$10,000
Good Seed Trust	\$2,250	NZ Filipino Sto Nino Devotees Trust	\$6,000	Royal Oak Primary School	\$5,000
Grammar Junior Rugby Football Club	\$5,000	NZ Golf Inc	\$10,000	Royal Oak Racquets Club Inc	\$10,000
Grammar Windsor Hockey Club Inc	\$1,993	NZ Hockey Fed Inc	\$5,200	SANZ - 1st Orakei Sea Scout Group	\$1,300
Great Potentials Foundation Inc	\$30,000	NZ Indian Central Assn Inc	\$3,500	SANZ - Maungarei Scout Group	\$2,500
Grey Lynn Park Festival Trust	\$8,000	NZ Lacrosse Assn Inc	\$1,200	SANZ - Owairaka Sea Scouts	\$1,800
Hauraki Ice Racing Club Inc	\$3,000	NZ Music Foundation Trust 2011	\$3,000	SANZ - Royal Oak Group	\$15,000
Hearing Dogs for Deaf People NZ	\$5,000	NZ Nepal Soc Inc	\$2,500	SANZ - St Heliers/Glendowie Scout Group	\$2,900
Heart Kids NZ Inc	\$45,900	NZ Opera Ltd	\$8,000	SPCA - Auckland	\$10,000
Heilala O Filipai Trust Board	\$5,000	NZ Sikh Womens Assn Inc	\$5,000	Sailability Auckland	\$7,000
Herne Bay Ponsonby Rackets Club Inc	\$5,000	NZ Spinal Trust	\$25,000	School of Hard Knocks Aotearoa NZ	\$6,000
Home & Family Counselling Inc	\$10,000	NAPTA Charitable Trust	\$2,000	Sea Cleaners Trust	\$7,500
Huntingtons Disease Assn Auckland Inc	\$6,000	National Youth Theatre Company Trust	\$7,500	Shakti Community Council Inc	\$7,500
Inner City Womens Group Inc	\$5,000	Netball Northern Zone Inc	\$70,000	Show Me Shorts Film Festival Trust	\$2,000
Innerfit NZ Trust	\$10,000	Netball Waitakere Inc	\$5,000	Silo Theatre Trust	\$25,000
Integrated Neurological Rehabilitation Foundation Inc	\$6,000	Ngatira Tennis Club	\$2,500	Sir Peter Blake Trust Inc	\$3,750
InZone Education Foundation	\$45,000	No 2 District Fed of NZ Soccer Inc	\$12,500	Special Olympics Auckland Inc	\$5,000
John Walker Find Your Field of Dreams Foundation	\$125,000	No 3 (Auckland City) Squadron Air Training Core	\$2,550	Special Olympics Upper North Island	
Kidney Kids of NZ Inc	\$4,000	North Shore Camerata Inc	\$3,000	Regional Council	\$8,000
Laura Fergusson Trust Inc	\$10,000	Objectspace	\$10,000	SPELD NZ Inc	\$10,000
Life Education Trust Auckland Central Inc	\$10,000	Okareka Dance Company Trust Board	\$5,000	Squash Auckland Inc	\$15,000
Life Education Trust Counties Manukau	\$30,000	One Tree Hill College	\$3,300	Sri Lanka Badminton Club	\$3,500
Life Education Trust NZ Inc	\$26,250	Operating Theatre Trust Inc	\$8,000	St Dominics School	\$10,000
Life Unlimited Trust	\$8,000	Orakei Primary School	\$10,000	St Marys College - Ponsonby	\$1,900
Louise Perkins Foundation	\$20,000	Oranga Primary School	\$5,000	St Marys School - Avondale	\$5,000
Lynn Avon United Assn Football Club Inc	\$2,000	Order of St John Northern Region	\$80,000	St Matthews Chamber Orchestra Inc	\$5,000
Macular Degeneration NZ	\$5,660	Orff NZ Aotearoa Inc	\$4,000	St Patrick's Festival Trust	\$20,000
Manaiakalani Education Trust	\$25,000	Otauhu College	\$30,000	St Peters College - Auckland	\$6,000
Manukau Auckland Speedboat Club	\$3,000	Otauhu United AFC	\$3,900	St Pius X School Auckland	\$2,939
Manukau Canoe Club Inc	\$1,000	Owairaka District School	\$1,983	Starjam Charitable Trust	\$15,000
Marching Auckland Assn Inc	\$4,000	Pacific Badminton Club	\$5,000	Starship Foundation	\$150,000
		Pacific Music Awards Trust	\$17,500		

GRANT N° 9016685

Life Education Trust

## Harold's got a serious side too

"The children really look forward to Harold; his arrival is seen as an important part of the year." That's a comment from a teacher who recognises the vital work our yellow character is doing. Harold's one of the most recognisable faces of the Life Education Trust, a charity that reaches over 250,000 children a year with guidance about making healthy choices so they can live full and enriched lives. This hardworking trust delivers over 26,000 lessons each year and the Lion Foundation is happy to help by supporting six educator salaries in the Counties Manukau region.



GRANT N° 9016409

Polyfest Trust



# Let's hear it for 42 years of colour and culture!

The ASB Polyfest Trust is regarded as the largest Polynesian festival of its kind in the world. From small beginnings at Hillary College in Orewa it has grown to be a three-day event that attracts over 100,000 visitors. Every year the culture and customs of New Zealand's Pacific neighbours are celebrated through music, dance and tradition, showcasing the talents of professional artists, community groups and school children. It's an event that's become a major fixture in Auckland's social calendar and the Lion Foundation is looking forward to its continued success.



Storylines Childrens Literature Charitable Trust of NZ	\$3,750	Chefs for Compassion	\$35,000	Moerewa School	\$5,000
Sunnydene Special School	\$20,000	Colla Voce Ensemble (2010) Inc	\$1,453	Mountains to Sea Conservation Trust	\$980
Supporters of Tiritiri Matangi Inc	\$3,500	De Paul House	\$50,000	No 1 District Fed of NZ Soccer Inc	\$20,000
Supporting Families in Mental Illness - Auckland Inc	\$2,500	Glenfield Bowling Club Inc	\$4,870	Northland Swimming Assn Inc	\$3,000
Surf Life Saving Northern Region	\$15,000	Glenfield College	\$20,000	Opua School	\$1,087
Sustainable Coastlines Charitable Trust	\$10,000	Glenfield Community Centre Inc	\$13,669	Order of St John Northern Region	\$30,000
Talk Link Trust	\$5,000	Glenfield Rugby Union & Sports Club Inc	\$70,000	Oromahoe School	\$898
Tamaki Community Development Trust	\$10,000	Grief Support and Education Charitable Trust Board	\$11,625	Royal NZ Plunket Soc Inc	\$25,000
Te Karanga Charitable Trust	\$5,000	Gymnastics Community Trust	\$32,000	SPELD NZ Inc	\$3,500
Te Kohanga Reo O Te Taurere	\$3,600	Kaipatiki Community Facilities Trust	\$25,921	Sport Northland	\$20,000
Te Tuhi Contemporary Art Trust	\$3,000	Kaipatiki Community Facilities Trust	\$27,000	Tennis Northern Region Inc	\$6,500
Te Waipuna Puawai Mercy Oasis Ltd	\$6,000	Kaipatiki Community Facilities Trust	\$80,403	United Kawakawa Rugby Football Club Inc	\$8,166
Tennis Auckland Inc	\$20,000	Kaipatiki Project Inc	\$11,406		
The Attitude Trust	\$50,000	Kaipatiki Youth Development Trust	\$55,000		
The Crescendo Trust of Aotearoa	\$3,000	Kauri Park School	\$29,000		
Theatre Stampede Charitable Trust	\$5,000	Manuka Primary School	\$35,000		
To'utupu Tonga Trust	\$4,000	Marlborough Park Tennis Club Inc	\$1,368		
Tug William C Daldy Preservation Soc Inc	\$15,000	Netball North Harbour Inc	\$40,000		
United Way (NZ) Charitable Trust	\$5,000	Nga Tikanga Pono Te Kohanga Reo Soc Inc	\$14,693		
University of Auckland Foundation	\$25,000	North Harbour Basketball Assn Inc	\$25,000		
University-Mount Wellington AFC Inc	\$2,500	North Harbour Triathlon Club Inc	\$3,810		
Vaishnav Parivar (NZ) Inc	\$5,000	North Shore Womens Centre	\$7,827		
Viva Voce Inc	\$7,000	Northart Soc Inc	\$29,684		
Volunteering Auckland Trust	\$4,000	Northart Soc Inc	\$32,667		
Waiaata Epsom Tennis Club Inc	\$1,000	Northcote & Birkenhead Tigers Rugby League & Sports Club Inc	\$35,000		
Watersafe Auckland Inc	\$10,000	Northcote Birkenhead Rugby Union & Sports Club Inc	\$27,500		
Wesley Athletic & Harrier Club	\$3,000	Northcote Birkenhead Schools Waterwise Trust	\$27,130		
Wesley Intermediate School	\$2,009	Northcote Birkenhead Yacht Club Inc	\$19,363		
Western Districts Hockey Club Inc	\$4,000	Northcote Bowling Club Inc	\$74,960		
Western Springs Assn Football Club Inc	\$10,000	Northcote College	\$31,000		
Western Springs College	\$5,087	Northcote Lawn Tennis Club Inc	\$39,171		
Winstone Park Tennis Club Inc	\$2,000	Northcote Point Community Creche Inc	\$10,316		
YMCA of Auckland Inc	\$80,000	Northcote Primary School	\$71,407		
YWCA - Auckland	\$10,000	Northcote Softball Club Inc	\$19,667		
Yachting NZ Inc	\$40,000	Northcote Toy Library	\$1,534		
Yes Disability Resource Centre Services Trust Board	\$20,000	SANZ - Birkenhead Sea Scout Group	\$5,672		
Youth Football Development Trust	\$8,000	Soc of St Vincent de Paul Maria Assumpta Conference Beachaven	\$2,745		
Youthline Auckland Charitable Trust	\$30,000	Sunnybrae Normal School	\$3,851		

## FRANKLIN

The Lion Foundation acknowledges the outstanding contribution of the owners and staff at the following venues which generated the funds which have led to these published grants being made: **Barb's Bar and Diner.**

Cancer Soc of NZ Auckland Northern Division Inc	\$10,000
Child Cancer Foundation Inc	\$5,000
Counties Manukau Rugby Football Union Inc	\$6,000
Eventing Auckland Inc	\$10,000
Franklin Arts Festival Soc Inc	\$2,000
NZ Jet Sprint Assn Inc	\$2,000
New Foundations Trust	\$1,700
Order of St John Northern Region	\$10,000
Royal NZ Plunket Soc Inc	\$10,000
St Andrews Community Trust	\$2,500
Sunset Beach Lifeguard Service Inc	\$10,000
Waipipi Bowling Club Inc	\$2,000
Waiuku Business & Development Assn Inc	\$24,500
Waiuku College	\$10,000
Waiuku District Cricket Club	\$4,000
Waiuku Family Support Network	\$5,000
Waiuku Golf & Squash Club Inc	\$5,000
Wesley College	\$5,000

## KAIPARA

The Lion Foundation acknowledges the outstanding contribution of the owners and staff at the following venues which generated the funds which have led to these published grants being made: **Dargaville Central Hotel.**

SANZ - First Dargaville Scout Group	\$2,000
-------------------------------------	---------

## MANUKAU

The Lion Foundation acknowledges the outstanding contribution of the owners and staff at the following venues which generated the funds which have led to these published grants being made: **Grace's Place Mangere, The Prospect Of Howick, Backyard Bar, S.O.S Bar & Gaming Lounge, O'Ryan's Irish Bar, Hala Vuna Corner Bar.**

AKA - Kotiri Kindergarten	\$1,500
AKA - Murdoch Park Kindergarten	\$4,000
AKA - Papatoetoe Kindergarten	\$5,000
AKA - Whiteacres Kindergarten	\$2,470

## BIRKENHEAD

The Lion Foundation acknowledges the outstanding contribution of the owners and staff at the following venues which generated the funds which have led to these published grants being made: **The Good Home Birkenhead, Inn Field.**

Beach Haven Birkdale Residents Assn Inc	\$21,838
Beach Haven Primary School	\$55,000
Beachhaven Tennis Club	\$76,587
Birkdale Primary School	\$44,191
Birkenhead Bowling Club Inc	\$59,697
Birkenhead City Cricket & Sports Club Inc	\$37,500
Birkenhead College	\$68,260
Birkenhead Playcentre Soc Inc	\$2,600
Birkenhead Playcentre Soc Inc	\$114,166
Birkenhead United Assn Football & Sports Club Inc	\$63,000

## FAR NORTH

The Lion Foundation acknowledges the outstanding contribution of the owners and staff at the following venues which generated the funds which have led to these published grants being made: **Hunter Star Hotel.**

Auckland District Kidney Soc Inc	\$5,000
Bay of Islands Amateur Swimming Club Inc	\$7,000
Bay of Islands Budgeting Service Trust	\$15,000
Bay of Islands College	\$5,000
Bay of Islands Vintage Railway Trust	\$2,974
Hukerenui School	\$20,000
Maromaku Reserves Board Inc	\$5,000



Accounting for Charities Trust	\$2,000	Jellicoe Park Tennis Club Manurewa Inc	\$1,598	Sutton Park School	\$10,000
Age Concern Counties Manukau Inc	\$10,000	John Walker Find Your Field of Dreams Foundation	\$125,000	Te Kura Maori o Nga Tapuwae	\$4,369
All Saints Anglican Church - Grief & Loss Support Services	\$5,000	Life Education Trust Counties Manukau	\$30,000	Te Whakaora Tangata	\$15,000
Ambury Park Centre Inc	\$8,000	Life Vision Soc Inc	\$40,000	Toddlers Turf Child Care Centre Inc	\$1,080
Anand Isher Educational & Community Trust	\$8,000	Maa Shakti Charitable Trust	\$10,000	Totara Hospice South Auckland	\$25,000
Anchorage Park School	\$9,500	Mangere Bridge Progressive Business Assn Inc	\$9,900	Training and Budget Services Inc	\$5,000
Asthma & Respiratory Foundation of NZ Inc	\$20,000	Mangere Central School	\$5,000	Waterlea School	\$5,000
AttainAble Trust	\$40,000	Mangere College	\$10,000	Wesley College	\$5,000
Auckland Basketball Services Ltd	\$30,000	Mangere East Primary School	\$10,000	Woman Care Trust	\$3,000
Auckland Cricket Assn Inc	\$20,000	Manukau Beautification Charitable Trust	\$7,000	Yendarra School	\$20,000
Auckland Indian Sports Club Inc	\$3,000	Manukau Beautification Charitable Trust	\$9,975	Youthline Auckland Charitable Trust	\$10,000
Auckland Judo Assn Inc	\$3,000	Manukau City Assn Football Club Inc	\$4,000		
Auckland Kids Achievement Trust	\$10,000	Manukau City Cricket Club Inc	\$4,000		
Auckland Paraplegic & Physically Disabled Assn Inc	\$40,000	Manukau Indian Assn	\$8,000		
Auckland Secondary Schools Heads Assn Inc	\$4,000	Manukau Masters Swimming Club Inc	\$482		
Auckland Sport	\$10,000	Manukau Orchestral Soc Inc	\$3,000		
Aztec Sports Club	\$3,700	Mellons Bay School	\$4,328		
Botany Life Community Trust	\$5,000	Middlemore Foundation for Health Innovation	\$20,000		
Brain Injury Assn Auckland Inc	\$16,000	NZ Drom-Don-Ba Buddhist Society	\$5,000		
Bucklands & Eastern Beaches Tennis Club Inc	\$3,000	Netball NortherNZone Inc	\$20,000		
Bucklands Beach Intermediate School	\$3,000	No 40 (Howick) Squadron ATC Trust	\$1,500		
Campus Link Foundation	\$20,000	Ohui A Rangī Young Mariners	\$3,780		
Cancer Soc of NZ Auckland Northern Division Inc	\$2,000	Onehunga Mangere United Sports Club Inc	\$2,000		
Chinmaya Mission NZ Inc	\$3,500	Order of St John Northern Region	\$20,000		
Cockle Bay Tennis Club Inc	\$8,000	Otago College	\$15,000		
Counties Manukau Badminton Assn Inc	\$5,000	Pakuranga Country Club Inc	\$2,000		
Counties Manukau Cricket Assn Inc	\$8,000	Pakuranga Heights School	\$6,000		
Counties Manukau Maori Rugby League Culture & Sports Assn Inc	\$8,000	Panmure Squash Rackets Club Inc	\$5,000		
Counties Manukau Orienteering Club Inc	\$2,500	Papatoetoe Adolescent Christian Trust	\$7,500		
Counties Manukau Zone of NZRL Inc	\$20,000	Papatoetoe Central School	\$10,000		
CrossNet Inc	\$5,000	Papatoetoe East Primary School	\$1,198		
Dawson Primary School	\$20,000	Papatoetoe Intermediate School	\$3,885		
East Tamaki School	\$4,548	Papatoetoe Senior Citizens Club Inc	\$5,399		
Family Start Manukau	\$15,000	Papatoetoe South School	\$10,000		
Fatamanu Aoga Tupu Olaola Moui Trust	\$7,000	Papatoetoe Sports & Community Charitable Trust	\$10,000		
Fountain of Knowledge Trust	\$10,000	Papatoetoe Tennis Club Inc	\$5,000		
Friendship House Trust	\$10,000	Pasifika Festival Villages Trust	\$9,767		
Good Seed Trust	\$2,250	Penina Health Trust	\$7,000		
Graduate Choir NZ Trust	\$12,000	Philharmonic Soc Inc	\$2,000		
Hindu Heritage Research Foundation NZ	\$2,500	Picton Centre Trust	\$7,500		
Howick & Districts Historical Soc Inc	\$20,000	PILLARS Inc	\$10,000		
Howick Brass Inc	\$5,000	Polyfest Trust	\$10,000		
Howick Childrens And Youth Theatre Inc	\$2,000	Probasee Bengalee Assn of NZ Inc	\$3,000		
Howick Croquet Club Inc	\$2,000	Rawiri Residents Assn Inc	\$2,000		
Howick Golf Club Inc	\$10,000	Rise Up Trust	\$15,000		
Howick Group of La Leche League	\$1,613	Robertson Road School	\$1,852		
Howick Gymnastic Club	\$8,000	Rowandale Primary School	\$5,000		
Howick Intermediate School	\$35,000	SANZ - Howick Sea Scout Group	\$35,000		
Howick Little Theatre Inc	\$3,400	Sir Douglas Bader Intermediate School	\$10,335		
Howick Pakuranga Hockey Club Inc	\$6,000	South Auckland Family Refuge Inc	\$20,000		
Howick Softball Club Fencibles Inc	\$5,000	Southern Districts Hockey Club Inc	\$7,000		
Howick Squash Club Inc	\$4,000	Special Olympics Howick-Pakuranga	\$5,000		
Icon Trampoline Club Inc	\$5,000	Special Olympics Manukau	\$5,000		
Inner City Womens Group Inc	\$5,000	St Johns the Evangelist Daycare Centre Trust	\$8,000		
Iosis Ltd	\$6,000	St Peter Chanel Preschool	\$10,000		
Iwi United Inc	\$2,000	Storylines Childrens Literature Charitable Trust of NZ	\$3,750		
		Sunnyside Tennis Club Inc	\$1,500		
		Supporting Families in Mental Illness - Auckland Inc	\$2,500		

## NORTH SHORE

The Lion Foundation acknowledges the outstanding contribution of the owners and staff at the following venues which generated the funds which have led to these published grants being made: **Northcote Tavern, Fat Boys Tavern, The Takapuna Bar, Valentines Restaurant, Backyard Views Bar, The Malt.**

60's Up Movement of NZ Inc	\$2,000
A Girl Called Hope	\$9,000
AKA - Northcote Central	\$5,000
ASD Kids Community Charitable Trust	\$5,300
Age Concern North Shore Inc	\$10,000
Akarana Zone of NZ Rugby League Inc	\$15,000
Albany Primary School	\$5,000
Alzheimers Auckland Charitable Trust	\$2,500
Auckland Canoe Polo Soc Inc	\$4,000
Auckland Childrens Theatre Academy Trust	\$4,000
Auckland Coastguard Inc	\$10,000
Auckland Cricket Assn Inc	\$40,000
Auckland District Kidney Soc Inc	\$5,000
Auckland Diving Community Trust	\$5,000
Auckland Kids Achievement Trust	\$30,000
Auckland North Community and Development Inc	\$7,000
Auckland Secondary Schools Heads Assn Inc	\$5,000
Auckland Sport	\$15,000
Badminton North Harbour	\$20,000
Bays Youth Community Trust	\$4,000
Belmont Park Racquets Club	\$2,000
Big Buddy Mentoring Trust	\$5,000
Bowls North Harbour Inc	\$8,000
Boys Brigade in NZ Inc	\$2,048
Brain Injury Assn Auckland Inc	\$16,000
Busting With Life Dragon Boat Team Inc	\$5,000
Campus Link Foundation	\$20,000
Cancer Soc of NZ Auckland Northern Division Inc	\$40,000
Canoe Racing NZ Inc	\$15,000
Castor Bay Tennis Club Inc	\$3,500
Child Cancer Foundation Inc	\$10,000
Childrens Autism Foundation	\$10,000
Coastguard Northern Region Inc	\$10,000
Cochlear Implant Foundation of NZ Inc	\$30,000
East Coast Bays & Districts Cricket Club Inc	\$3,150
East Coast Bays Assn Football Club Inc	\$5,000
East Coast Bays Bridge Club Inc	\$5,000
East Coast Bays Community Project Inc	\$3,000
East Coast Bays Hockey Club	\$5,000

GRANT N° 9013867

On Board Skate Inc

## These skills will be with them for a lifetime

On Board Skate Inc. uses the thrill of skateboarding to help boarders of all abilities develop important life skills. They're taught how to take responsibility for their own actions, solve problems and overcome personal challenges, all in a fun environment and under the guidance of experienced instructors. These family-inclusive programmes operate from skateboard parks right across the Auckland region, empowering kids by showing them how to improve their skills safely while building their own sense of value. It's a good result for the kids and society that the programmes have grown in popularity ten-fold in just three years.



East Coast Bays Rugby League Club Inc	\$7,000
East Coast Bays United Softball Club	\$5,000
English Language Partners North Shore Inc	\$8,000
Environmental Education for Resource Sustainability Trust	\$5,000
Equestrian 4 Everyone	\$5,000
Forrest Hill Milford United Football Club Inc	\$8,000
French Film Arts Trust	\$10,000
Fushin Ryu Karate NZ Inc	\$6,000
Greenhithe Community Trust	\$6,000
Greenhithe Junior Assn Football Club Inc	\$7,000
Greenhithe Riding for the Disabled Inc	\$9,500
Greenhithe Tennis Club Inc	\$5,253
Lake House Trust Inc	\$8,000
Life Education Trust North Shore	\$10,000
Mairangi Arts Centre Trust	\$2,784
Mairangi Bay Bowling Club Inc	\$20,000
Mairangi Bay Play Centre	\$1,035
Mairangi Bay School	\$2,500
Manly Bowling Club Inc	\$15,000
Marist North Harbour Rugby & Sports Club Inc	\$10,000
Meadowood House Inc	\$1,800
Milford Baptist Church	\$3,000
Milford Bowling Club Inc	\$7,000
Milford Tennis Club Inc	\$2,500
Multiple Sclerosis Soc of Auckland & the North Shore Inc	\$15,000
Murrays Bay Schools Waterwise Society Inc	\$15,000
Muscular Dystrophy Northern Inc	\$8,000
NSPA - Takapuna Playcentre Inc	\$1,500
NZ Golf Inc	\$11,250
NZ Wheelchair Tennis Inc	\$7,200
National Council of Women of NZ Inc	\$1,500
Netball NortherNZone Inc	\$50,000
New Dawn Partnership Inc	\$5,000
No 1 District Fed of NZ Soccer Inc	\$40,000
North Harbour Basketball Assn Inc	\$15,000
North Harbour Budgeting Services Inc	\$2,000
North Harbour Football & Sports Club Inc	\$8,000
North Harbour Golf Assn Inc	\$5,000
North Harbour Indian Sports Club Inc	\$5,000
North Harbour Living Without Violence Collective	\$15,000
North Harbour Rugby Football Union Inc	\$140,000
North Harbour Softball Assn Inc	\$15,000
North Harbour Synchronised Swimming Club	\$5,694
North Shore Brass Inc	\$8,000
North Shore Bridge Club Inc	\$6,000
North Shore Centres of Mutual Aid Inc	\$4,000
North Shore Croquet Club Inc	\$2,500
North Shore Events Centre Trust Inc	\$30,000
North Shore Hospice Trust	\$75,000
North Shore Master Swimmers Inc	\$2,000
North Shore Rowing Club Inc	\$5,000
North Shore Rugby Football Club Inc	\$60,000
North Shore Squash Rackets Club Inc	\$30,000
North Shore United AFC Inc	\$9,724
Northart Soc Inc	\$54,684
Northcote College	\$31,683
Northcote Primary School	\$71,408
NorthSport Academy Ltd	\$3,000
OnBoard Skate Inc	\$30,000
Optionz Brain Rehabilitation & Recovery Trust - Albany	\$20,000
Order of St John Northern Region	\$40,000
Pasifika Festival Villages Trust	\$9,766
Polyfest Trust	\$10,000
Pupuke Golf Club Inc	\$15,000
Rosmini College	\$1,500
Royal NZ Plunket Soc Inc	\$45,000
Safer North Community Trust	\$4,700
Sea Cleaners Trust	\$7,500
Shore Community Trust	\$2,000
Sir Peter Blake Marine Education & Recreation Centre Inc	\$10,000
Sir Peter Blake Trust Inc	\$3,750
Special Olympics North Harbour	\$1,000
Supporters of Tiritiri Matangi Inc	\$3,500
Supporting Families in Mental Illness - Auckland Inc	\$2,500
Surf Life Saving Northern Region	\$5,000
Takapuna Boating Club Inc	\$10,000
Takapuna Bowling Club Inc	\$10,000
Takapuna Croquet Club Inc	\$3,500
Takapuna Grammar School	\$15,000
Takapuna Grammar School Rowing Club Inc	\$4,000
Takapuna Hockey Club Inc	\$3,000
Takapuna Normal Intermediate School	\$5,000
Takapuna Primary School	\$5,000
Takapuna Rugby Football Club Inc	\$8,000
Tamaki Makaurau Maori Hockey Inc	\$10,000
Taniwha Outrigger Canoe Club Inc	\$5,000
Tennis Northern Region Inc	\$7,000
Torbay Sailing Club Inc	\$30,000
Touch Compass Dance Trust	\$8,000
Twisted Yarns Netball Club	\$1,350
Waitemata Golf Club Inc	\$33,000
Waitemata Parents Centre Inc	\$5,000

Wakatere Boating Club Inc	\$7,500
Wandersearch Auckland Charitable Trust	\$10,000
Willow Park School	\$2,165
Yachting NZ Inc	\$30,000
Yes Disability Resource Centre Services Trust Board	\$20,000
Youthline Auckland Charitable Trust	\$60,000

### PAPAKURA

The Lion Foundation acknowledges the outstanding contribution of the owners and staff at the following venues which generated the funds which have led to these published grants being made: **Papakura Tavern.**

Ardmore Marist Rugby & Sports Club Inc	\$30,000
CMKA - Papakura West Kindergarten	\$5,000
Cochlear Implant Foundation of NZ Inc	\$10,000
Gateway Community Trust Auckland	\$15,000
Hunua Tennis Club Inc	\$2,000
Kokako Lodge Trust	\$5,000
Mansell Senior School	\$5,000
Papakura City Football Club Inc	\$6,000
Rangmanoh of NZ Inc	\$3,000
Rising Foundation Trust	\$10,000

### RODNEY

The Lion Foundation acknowledges the outstanding contribution of the owners and staff at the following venues which generated the funds which have led to these published grants being made: **Stables Sports Bar, The Wade Hotel.**

Age Concern Rodney Inc	\$10,000
Auckland Coastguard Inc	\$10,000
Auckland Cricket Assn Inc	\$20,000
Big Buddy Mentoring Trust	\$5,000
Cancer Soc of NZ Auckland Northern Division Inc	\$40,000
Centrestage Theatre Company (Orewa) Inc	\$6,000
Coastguard Northern Region Inc	\$10,000
Estuary Arts Charitable Trust	\$4,000
Gulf Harbour School	\$2,500
Helensville District Golf Club Inc	\$5,000
Hibiscus Coast Arts Studio Trail	\$3,000
Hibiscus Coast Raiders Rugby League & Sports Club	\$4,500
Hibiscus Coast Softball Club Inc	\$1,395
Hibiscus Coast Youth Council Inc	\$3,000
Hibiscus Hospice Charitable Trust	\$25,000
Hibiscus Sea Rescue Trust	\$20,000
Hockey Hibiscus Trust Inc	\$50,000
Kia Timata Ano Trust Inc	\$10,000
Life Education Trust Rodney	\$15,000
NZ Golf Inc	\$10,000
North Harbour Rugby Football Union Inc	\$60,000
Order of St John Northern Region	\$20,000
Orewa College	\$5,000
Orewa Croquet Club Inc	\$5,000
Puhoi Volunteer Rural Fire Force Inc	\$20,000
Red Beach Surf Life Saving Club Inc	\$5,000
Rosa Counselling Trust	\$5,000
Royal NZ Plunket Soc Inc	\$25,000
Science Equipment Library	\$3,000
Sharks Sports Trust Inc	\$6,000
Silverdale United Rugby & Sports Club Inc	\$10,000
Stanmore Bay School	\$5,000
Supporting Families in Mental Illness - Auckland Inc	\$2,500
Surf Life Saving Northern Region	\$5,000
Te Awaroa Youth Club Trust	\$4,000
Tennis Northern Region Inc	\$6,500
Wainui School	\$5,000
Whangaparaoa College	\$10,000
Whangaparaoa Golf Club Inc	\$30,000
Whangaparaoa Primary School	\$5,000
Whangaparaoa Tennis Club Inc	\$8,000
Yes Disability Resource Centre Services Trust Board	\$20,000

### WAITAKERE

Showjumping Waitemata	\$1,957
-----------------------	---------

## Waikato-BOP

### HAMILTON

The Lion Foundation acknowledges the outstanding contribution of the owners and staff at the following venues which generated the funds which have led to these published grants being made: **The Quadrant, Dinsdale Tavern, Te Rapa Tavern, Hillcrest Tavern.**

Adastra Foundation	\$11,566
Alan Duff Charitable Foundation	\$5,000

Alzheimers Waikato Charitable Trust	\$5,000
Arts for Health Community Trust	\$2,000
Asthma & Respiratory Services (Waikato) Inc	\$7,000
Auckland District Kidney Soc Inc	\$5,000
Balloons Over Waikato Charitable Trust	\$15,000
Beerescourt Bowling Club Inc	\$1,500
Beerescourt Tennis Club Inc.	\$3,000
Berkley Normal Middle School	\$397
Bowls Waikato Inc	\$6,000
CNI Early Education Services Trust	\$4,000
Cantando Choir Inc	\$1,500
Career Moves Trust	\$8,000
Catholic Family Support Services	\$2,000
Chamber Music N Z Trust Board	\$2,500
Claudelds Rovers Sports Club Inc	\$1,500
Cochlear Implant Foundation of NZ Inc	\$20,000
Community Law Waikato Trust	\$1,500
Community Waikato Trust	\$2,000
Crawshaw Primary School	\$10,000
Creative Waikato Trust	\$10,000
Deanwell School	\$6,000
Drifters Rock N Roll Club Inc	\$3,000
Dynamo Cycling & Sports Club Inc	\$5,000
Eastlink Tennis Trust Inc	\$20,000
Enrich+	\$10,000
Fairfield College	\$4,000
Fairfield Swim Club Inc	\$8,000
Flagstaff Club Inc	\$3,356
Forest Lake Primary School	\$10,000
Frankton Athletic & Harrier Club Inc	\$2,071
Frankton Rugby Sports Club Inc	\$4,500
Frankton School	\$20,000
Fraser Technical Cricket Club Inc	\$2,500
Friends of Hamilton Zoo Inc	\$5,000
Glenview Community Centre Inc	\$5,000
Hamilton Astronomical Soc Inc	\$2,000
Hamilton BMX Club Inc	\$2,000
Hamilton Children and Families Trust	\$1,960
Hamilton Christian Nightshelter Trust	\$5,000
Hamilton Christmas Charitable Trust	\$10,000
Hamilton City Gymsports Inc	\$8,000
Hamilton Civic Choir Inc	\$2,000
Hamilton Cricket Assn Inc	\$30,000
Hamilton East Croquet Club Inc	\$1,495
Hamilton Gardens Summer Festival Foundation	\$15,000
Hamilton Girls High School	\$25,000
Hamilton Multicultural Services Trust	\$2,000
Hamilton Old Boys Cricket Club Inc	\$10,000
Hamilton Operatic Soc Inc	\$10,000
Hamilton Rugby Union Inc	\$286
Hamilton Sanatan Trust	\$7,000
Hamilton South Community Centre Assn Inc	\$1,500
Hamilton Squash & Tennis Club Inc	\$10,000
Hamilton Star University Cricket Club Inc	\$3,000
Hamilton Volleyball Club Inc	\$3,600
Hamilton West School	\$9,968
Hamilton Woodturners Soc Inc	\$2,000
Head Injury Soc Waikato Inc	\$10,000
Hearing Assn Hamilton & Districts Inc	\$2,328
Hillcrest Amateur Swimming Club Inc	\$6,772
Horsham Downs Golf Club Inc	\$20,000
John Walker Find Your Field of Dreams Foundation	\$10,000
Life Education Trust NZ Inc	\$8,000
Lugton Park Combined Sports Assn Inc	\$8,000
MS Waikato Trust	\$2,500
Male Support Services Waikato	\$5,000
Marist Womens Hockey Club Inc	\$1,000
Melville Assn Football Club Inc	\$35,000
Melville High School	\$15,000
Midlands Hockey Inc	\$15,000
Musikmakers Hamilton Inc	\$1,340
NZ Golf Inc	\$10,000
NZ Riding for the Disabled Assn Waikato Group Inc	\$5,000
NZ Water Ski Racing Assn Inc	\$5,000
NZ Wheelchair Tennis Inc	\$2,300
Netball Waikato Bay of Plenty Zone Inc	\$10,000
No 3 District Fed of N Z Soccer Inc	\$25,000
Northern Districts Cricket Assn Inc	\$25,000
Northern United Football Club Inc	\$2,800
One Victoria Trust Board Inc	\$50,000
Optionz Brain Rehabilitation & Recovery Trust - Hamilton	\$7,000
Order of St John Central Region Trust Board	\$40,000
Orienteering Waikato Inc	\$1,000
Orini Combined School	\$8,000
Pacific Rose Festival Trust	\$699
Pasifika by Nature Trust	\$4,000
Perry Outdoor Education Trust	\$40,000
RW 2014 Ltd	\$10,000
Rape & Sexual Abuse Healing Centre Inc	\$7,500
Refugee Orientation Centre Trust	\$2,000
Rostrevor House Inc	\$5,000
Royal NZ Plunket Soc Inc	\$5,000
Ryder - Cheshire Foundation (Waikato)	\$5,000
SANZ - Chartwell Scout Group	\$1,299
SANZ - Waikato Scout & Guide Gang Show	\$1,500



GRANT N° 9014541

One Victoria Trust (The Meteor)



# A performance that won't bring the house down

The Meteor is Hamilton's creative hub for the performing arts. Without serious earthquake strengthening it was in danger of being lost to the community. Generations of performers have trod the boards in this venerable building and the Lion Foundation was happy to play a role in One Victoria Trust's fundraising campaign. In addition to structural work, new facilities have been added and an extensive refurbishment undertaken, ensuring that Hamiltonians will continue to enjoy the thrill and interaction of live theatre.



Shama Hamilton Ethnic Womens Centre Trust	\$7,500
Silverdale Normal School	\$5,000
Sport Waikato Education Trust	\$50,000
Squash Waikato Inc	\$7,500
St Johns College Hamilton	\$6,400
St Marys Convent Chapel Charitable Trust	\$20,000
St Pauls Swimming Club Inc	\$5,000
Swim Waikato Inc	\$40,000
Tainui Waka Cultural Trust	\$10,000
Te Awa River Ride Charitable Trust	\$30,000
Te Hui Amorangi ki Te Manawa o Te Wheke Trust Board	\$10,000
Te Kohao Health Ltd	\$10,000
Te Rapa School	\$5,000
Te Rapa Squash Club Inc	\$4,000
Tennis Waikato Thames Valley Inc	\$10,000
Toughlove Waikato Trust	\$650
True Colours Charitable Trust	\$15,000
Waikato Agricultural & Pastoral Assn Inc	\$8,000
Waikato Badminton Assn Inc	\$5,000
Waikato Basketball Council Inc	\$5,000
Waikato Breast Cancer Trust	\$5,380
Waikato Combined Equestrian Group Inc	\$10,000
Waikato Community Broadcasting Charitable Trust	\$5,000
Waikato Community Hospice Trust	\$20,000
Waikato Diving Inc	\$2,704
Waikato Ethnic Family Services Trust	\$1,000
Waikato Hockey Charitable Trust	\$20,000
Waikato Indoor Bowling Centre of N Z Inc	\$2,500
Waikato Institute for Leisure & Sport Studies	\$45,000
Waikato Junior Golfing Society Inc	\$2,380
Waikato Paraplegic and Physically Disabled Assn Inc	\$5,000
Waikato Punjabi Badminton Club Inc	\$3,360
Waikato Regional Volleyball Assn Inc	\$10,000
Waikato Rocks Trust	\$10,000
Waikato Rowing Club Inc	\$5,000
Waikato Rugby Union Inc	\$40,000
Waikato Smallbore Rifle Assn	\$1,800
Waikato Society of Arts Inc	\$5,000
Waikato Table Tennis Assn Inc	\$2,000
Waikato Unicol Assn Football Club Inc	\$4,000
Waikato University Hockey Club	\$5,000
Waikato University Netball Club Inc	\$7,355
Waikato University Rugby Football Club Inc	\$5,000
Waikato Valley Cricket Assn Inc	\$2,000
Waikato Waterpolo Club Inc	\$9,500
Waikato Youth Empowerment Trust	\$20,000
Wanderers Sports Club Hamilton Inc	\$7,500
West Hamilton United Football Club Inc	\$15,000
Woodstock School	\$4,000
Young Workers Resource Centre Inc	\$3,000
Zeal Education Trust	\$15,000

## HAURAKI

The Lion Foundation acknowledges the outstanding contribution of the owners and staff at the following venues which generated the funds which have led to these published grants being made: **Rob Roy Hotel, Sterling Tavern.**

Coastguard Northern Region Inc	\$10,000
Goldfields Railway Inc	\$30,000
Habitat Enhancement and Landcare Partnership Waihi Inc	\$10,000
Netball Waikato Bay of Plenty Zone Inc	\$10,000
Orienteering Waikato Inc	\$1,000
Perry Outdoor Education Trust	\$20,000
SANZ - 1st Waihi Scout Group	\$2,000
Sport Waikato Education Trust	\$10,000
St James Presbyterian Church - Waihi	\$1,500
St Joseph's School - Waihi	\$3,649
Tennis Waikato Thames Valley Inc	\$10,000
Thames Valley Hockey Assn Inc	\$10,000
Thames Valley Rugby Football Union Inc	\$6,000
Waihi Agricultural & Pastoral Assn	\$5,000
Waihi Athletic Rugby Football and Sports Union Inc - WYRC	\$7,900
Waihi Beach Cycle Trails Charitable Trust	\$25,000
Waihi Contract Bridge Club Inc	\$9,189
Waihi Golf Club Inc	\$20,000
Waihi Swimming Club	\$1,350
Waikato Valley Cricket Assn Inc	\$2,000

## KAWERAU

The Lion Foundation acknowledges the outstanding contribution of the owners and staff at the following venues which generated the funds which have led to these published grants being made: **Kawerau Hotel.**

Blue Light Ventures Inc - Kawerau	\$9,000
Kawerau and Districts Ageing in Place Inc	\$10,000
Kawerau Athletic & Harrier Club Inc	\$10,000
Kawerau Branch of the Royal NZ Soc for the Prevention of Cruelty to Animals Inc	\$1,081
Kawerau District Council	\$30,000
Kawerau Golf & Squash Club	\$20,000
Kawerau Pony Club Inc	\$8,000
Kawerau Preschool Learning Centre Inc	\$3,500
National Woodskills Trust	\$3,010
Netball Waikato Bay of Plenty Zone Inc	\$10,000
Perry Outdoor Education Trust	\$35,000
Sport BOP Charitable Trust	\$12,500
Tarawera High School	\$25,000
Te Manaaki Education Pre-School Trust	\$5,000
WERA Aotearoa Charitable Trust	\$3,000

## MATAMATA-PIAKO

The Lion Foundation acknowledges the outstanding contribution of the owners and staff at the following venues which generated the funds which have led to these published grants being made: **Waihou Tavern, Nottingham**

## Castle Hotel, Tahuna Tavern, Horse and Jockey Inn.

Adastra Foundation	\$10,000
Campbell Park Charitable Trust	\$4,000
Catholic Family Support Services	\$2,000
Condor Rugby Football Club Inc	\$3,000
Firth Primary School	\$1,149
M S Waikato Trust	\$5,000
Matamata Agricultural & Pastoral Assn	\$2,000
Matamata Assn Football Club Inc	\$20,000
Matamata College	\$9,686
Matamata Community Men's Shed	\$2,000
Matamata Equestrian Group Inc	\$2,500
Matamata Golf Club Inc	\$20,000
Matamata Piako Model Aero Club Inc	\$5,000
Matamata Rose Soc Inc	\$750
Midlands Hockey Inc	\$5,000
Morrinsville Agricultural & Pastoral Soc Inc	\$8,000
Morrinsville and Districts Senior Citizens Assn Inc	\$5,438
Morrinsville Art Gallery Charitable Trust	\$8,195
Morrinsville Bowling Club Inc	\$5,000
Morrinsville Bulls Rugby League Club	\$2,087
Morrinsville College	\$5,460
Morrinsville Cricket Assn Inc	\$4,646
Morrinsville Little Theatre	\$6,572
Morrinsville Primary School	\$11,000
Morrinsville R S A Bowling Club Inc	\$5,000
Morrinsville Tennis Club Inc	\$25,000
Morrinsville Volunteer Fire Brigade	\$40,000
Motor Neurone Disease Assn of NZ Inc - Waikato Branch	\$3,000
Motumaoho Primary School	\$3,450
Netball Waikato Bay of Plenty Zone Inc	\$15,000
No 3 District Fed of NZ Soccer Inc	\$25,000
Northern Districts Cricket Assn Inc	\$50,000
Northern Rugby Football Club Inc	\$450
Order of St John Central Region Trust Board	\$40,000
Orienteering Waikato Inc	\$1,000
Piako Gymnastics Club Inc	\$8,000
Pohlen Foundation Trust	\$10,000
Royal NZ Plunket Soc Inc	\$15,000
SANZ - Morrinsville Scout Group	\$1,500
Sport Waikato Education Trust	\$50,000
Tahuna Golf Club Inc	\$11,126
Tahuna School Board of Trustees	\$20,000
Te Aroha College	\$5,000
Te Aroha Contract Bridge Club Inc	\$1,000
Te Aroha Free Kindergarten Assc Inc	\$2,160
Te Aroha Golf Club Inc	\$10,000
Te Aroha Tennis & Squash Club Inc	\$15,896
Tennis Waikato Thames Valley Inc	\$12,000
True Colours Charitable Trust	\$3,000
Tui Park Bowling Club Inc	\$5,000
Waihou Rugby Football and Sports Club Inc	\$12,999
Waikato Badminton Assn Inc	\$5,000
Waikato Basketball Council Inc	\$15,000
Waikato Hockey Charitable Trust	\$20,000
Waikato Paraplegic and Physically Disabled Assn Inc	\$10,000
Waikato Rugby Union Inc	\$40,000



Waikato Valley Cricket Assn Inc	\$2,000
Waioata Bowling Club Inc	\$7,000

### NEW PLYMOUTH

The Lion Foundation acknowledges the outstanding contribution of the owners and staff at the following venues which generated the funds which have led to these published grants being made: **The Black Harp, Cinema Express Cafe And Bar.**

Alzheimers Taranaki (ADARDS) Inc	\$5,000
Amputees Fed of NZ Inc	\$2,000
Athletics Taranaki Inc	\$3,000
Basketball Taranaki Inc	\$5,000
Body and Soul Taranaki Trust	\$5,000
Bowls Taranaki Inc	\$4,400
Box Office Boxing Inc	\$4,400
Central Districts Cricket Assn Inc	\$10,000
Chamber Music NZ Trust Board	\$2,500
F C Western Inc	\$10,000
Fitzroy Bowling Club Inc	\$2,000
Fitzroy Surf Club Inc	\$4,400
Francis Douglas Memorial College	\$2,600
Gymnastica Gym Club Inc	\$5,000
Hearing Dogs for Deaf People NZ	\$5,000
Highlands Amateur Swimming Club Inc	\$10,000
Highlands Intermediate School	\$2,500
Hospice Taranaki Inc	\$15,000
Life Education Trust Taranaki	\$5,000
Manna Healing Centre Trust	\$995
Motor Neurone Disease Assn of NZ Inc - Waikato Branch	\$3,000
Moturoa Primary School	\$2,500
NATFKA - Devon Kindergarten	\$8,000
Netball Taranaki Inc	\$10,000
New Plymouth Basketball Assn Inc	\$7,500
New Plymouth City Band Inc	\$7,000
New Plymouth Croquet Club Inc	\$1,499
New Plymouth District Council	\$12,500
New Plymouth Girls High School	\$3,500
New Plymouth Group Riding for Disabled Inc	\$2,000
New Plymouth High School Old Boys Rugby & Sports Club Inc	\$2,000
New Plymouth Old Boys Swimming & Surf Club Inc	\$5,000
New Plymouth Operatic Soc Inc	\$5,000
New Plymouth Rangers Assn Football Club	\$3,000
North Taranaki Indoor Bowls Assn	\$2,000
Paritutu Bowling Club Inc	\$3,000
Park City Church Trust	\$4,000
Prisoners Aid and Rehabilitation Soc of Taranaki District Inc	\$1,500
RNZPS Taranaki Area Inc	\$846
Rock Quest Charitable Trust	\$4,979
Surf Life Saving NZ Inc - Central Region	\$5,000
Swimming Taranaki Inc	\$8,000
TFKA - Frankleigh Park Kindergarten	\$2,805
TFKA - Kahikatea Kindergarten	\$2,500
Taranaki Adult Literacy Services Inc	\$1,000
Taranaki Air Ambulance Trust	\$5,000
Taranaki Badminton Assn Inc	\$3,200
Taranaki Basketball Club Inc	\$10,000
Taranaki District Rugby Football League Inc	\$5,500
Taranaki Fancy Dancing Assn	\$849
Taranaki Fashion Art Award Charitable Trust	\$3,000
Taranaki Garden Trust Inc	\$7,000
Taranaki Gardens Festival Charitable Trust Board	\$7,500
Taranaki Golf Assn Inc	\$3,500
Taranaki Motorcycle Club	\$5,000
Taranaki Rescue Helicopter Trust	\$15,000
Taranaki Rugby Football Union Inc	\$12,000
Taranaki Sports Trust	\$74,000
Taranaki Toy Library Trust Inc	\$1,993
Taranaki Womens Refuge Charitable Trust Inc	\$2,500
Team Taranaki Inc	\$5,472
Tropfest NZ Charitable Trust Board	\$5,000
Waiwaka Tennis Club	\$2,000
WOMAD NZ Charitable Trust Board	\$15,000
Woodleigh Sports & Social Club Inc	\$5,000

### OPOTIKI

The Lion Foundation acknowledges the outstanding contribution of the owners and staff at the following venues which generated the funds which have led to these published grants being made: **Opotiki Hotel, Slim's Bar.**

Bay of Plenty Cricket Assn Inc	\$15,000
Bay of Plenty Opotiki Rodeo Assn Inc	\$15,000
Bay of Plenty Primary Schools Rugby Football Union Inc	\$4,798
Bay of Plenty Rugby Union Inc	\$40,000
Coastguard Opotiki Inc	\$30,000
Kauaetangohia Hapu Trust	\$6,674
Motu Trails Charitable Trust	\$2,000
Multi Sport Opotiki Inc	\$10,000
Netball Opotiki Centre Inc	\$4,715

Netball Waikato Bay of Plenty Zone Inc	\$15,000
No 3 District Fed of NZ Soccer Inc	\$10,000
Northern Districts Cricket Assn Inc	\$20,000
Opotiki Bowling Club Inc	\$10,000
Opotiki District Council	\$20,000
Opotiki Golf Club Inc	\$20,000
Opotiki Heritage & Agricultural Museum Charitable Trust	\$10,000
Opotiki Primary Schools Rugby Union Inc	\$4,249
Opotiki School	\$5,095
Order of St John Central Region Trust Board	\$30,000
Photoplayer Restoration Trust	\$3,000
Potaka School	\$10,000
Rangimarie Trust	\$20,000
Royal NZ Plunket Soc Inc	\$5,000
Sport BoP Charitable Trust	\$25,000
Sports Opotiki Inc	\$44,915
St Josephs Catholic School - Opotiki	\$35,000
Surf Life Saving NZ Inc - Eastern Region	\$10,000
Tauranga City Basketball Assn Inc	\$10,000
Te Kura Kaupapa Maori O Waioweka	\$40,000
Whakaatu Whanaunga Trust	\$11,000

### ROTORUA

The Lion Foundation acknowledges the outstanding contribution of the owners and staff at the following venues which generated the funds which have led to these published grants being made: **Mitchell Downs Tavern, Copthorne Hotel Rotorua.**

Age Concern Rotorua District Inc	\$5,000
Alan Duff Charitable Foundation	\$5,000
Alzheimers Soc Rotorua Inc	\$8,000
Anglican Diocese of Waiapu - St Lukes Rotorua	\$5,000
Aorangi Primary School - Rotorua	\$4,000
Asthma NZ - The Lung Assn Inc (Rotorua)	\$5,000
BoP Indoor Bowls Centre Inc	\$4,000
Bay of Plenty Badminton Assn Inc	\$1,000
Bay of Plenty District Rugby League Inc	\$7,500
Bay of Plenty Rugby Union Inc	\$10,000
C3 Church Rotorua Trust	\$2,000
Canteen - Rotorua Branch	\$5,000
Eastern Pirates Rotorua Sports & Cultural Club Inc	\$2,000
Get Kids Active Charitable Trust	\$5,000
Kawaha Point School	\$3,532
Lake City Athletic Club Inc	\$2,500
Life Education Trust Rotorua Area	\$5,000
Mamaku School	\$5,000
Mokoia Community Assn Inc	\$5,000
NZ Country Music Assn Inc	\$2,000
NZ Emergency Services Solutions	\$5,000
NZ String Quartet Trust	\$900
Netball Waikato Bay of Plenty Zone Inc	\$10,000
Owhata Primary School	\$5,000
Project Litefoot Trust	\$5,000
RPA - Lynmore Playcentre	\$6,000
Rotorua & Districts Justices of the Peace Assn	\$1,080
Rotorua Agricultural & Pastoral Assn Inc	\$860
Rotorua Basketball Assn Inc	\$1,500
Rotorua Bike Festival Charitable Trust	\$10,000
Rotorua CEC Trust	\$2,000
Rotorua Childrens Art House	\$1,000
Rotorua Community Creche and Kindergarten Inc	\$5,000
Rotorua Competitions Soc Inc	\$2,000
Rotorua Cricket Assn Inc	\$1,500
Rotorua District Riding for the Disabled Assn Inc	\$5,000
Rotorua Hospital Chaplaincy Trust	\$2,850
Rotorua Lakeside Concert Charitable Trust Inc	\$3,000
Rotorua United Assn Football Club Inc	\$5,000
Sport BoP Charitable Trust	\$12,500
St Marys Catholic Primary School - Rotorua	\$2,000
Te Kotahitanga o Te Arawa Waka Fisheries Trust Board	\$5,000
Te Kura Kaupapa Maori o Hurungaterangi	\$1,500
Te Papa Takaro O Te Arawa Trust	\$4,485
Waiapu Anglican Care - Growing Through Grief Rotorua	\$2,500
Wairiki Womens Refuge Inc	\$10,000
Western Heights High School	\$2,200

### SOUTH TARANAKI

NZ Fed of Young Farmers Clubs Inc	\$2,500
New Plymouth District Council	\$7,500
South Taranaki District Council	\$25,000
South Taranaki Womens Centre	\$2,248
Taranaki Air Ambulance Trust	\$5,000
Taranaki Motorcycle Club	\$5,000
Taranaki Rugby Football Union Inc	\$28,000

### TAUPO

The Lion Foundation acknowledges the outstanding contribution of the owners and staff at the following venues which generated the funds which have led to these published grants being made: **clbar.**

Age Concern Taupo Inc	\$6,400
Age Concern Taupo Inc	\$3,000
Aotearoa Maori Golf Assn Inc	\$5,000
APOPO	\$5,000
Auckland District Kidney Soc Inc	\$5,000
Awhina Soc Inc	\$15,000
Bay of Plenty Hockey Assn Inc	\$3,700
Bike Taupo Advocacy Group Inc	\$20,000
C3 Taupo Charitable Trust Board	\$4,000
Citizens Advice Bureau - Taupo	\$5,000
Cochlear Implant Foundation of NZ Inc	\$5,000
Dressage Bay of Plenty	\$2,357
Dynamo Cycling & Sports Club Inc	\$5,000
Equestrian Sports NZ Inc - National Equestrian Centre Taupo	\$15,000
Family and Financial Solutions Trust	\$2,626
Great Lake Taupo Hockey Club Inc	\$50,000
La Leche League - Taupo	\$890
Lake Taupo District Sports Advisory Council Inc	\$5,000
Lake Taupo Hospice Trust	\$15,000
Life Education Trust Taupo Ruapehu	\$15,000
MiCamp Trust	\$10,000
Midlands Hockey Inc	\$5,000
NZ Emergency Services Solutions	\$5,000
NZ Golf Inc	\$6,250
Netball Waikato Bay of Plenty Zone Inc	\$10,000
No 3 District Fed of NZ Soccer Inc	\$10,000
Order of St John Central Region Trust Board	\$10,000
Philips Search & Rescue Trust	\$50,000
Phoenix Rugby League Taupo Inc	\$10,000
RPA - Taupo Family Playcentre	\$5,000
Royal NZ Plunket Soc Inc	\$10,000
Sport Waikato Education Trust	\$10,000
Taupo Budget Advisory Service Inc	\$10,000
Taupo Clay Target Club Inc	\$3,000
Taupo Cricket Inc	\$7,000
Taupo Family Centre Inc	\$4,000
Taupo Model Railway Club Inc	\$5,000
Taupo Neighbourhood Support Soc Inc	\$5,000
Taupo Netball Centre Inc	\$10,000
Taupo Primary School	\$15,000
Taupo Rodeo Club Inc	\$15,000
Taupo Rowing Club Inc	\$5,000
Taupo Rugby Football Club Inc	\$5,695
Taupo Rugby Sub-Union Inc	\$10,000
Tri-Sport Taupo Inc	\$5,796
True Colours Charitable Trust	\$1,000
Waikato Paraplegic and Physically Disabled Assn Inc	\$10,000
Wairakei Primary School	\$5,000

### TAURANGA

The Lion Foundation acknowledges the outstanding contribution of the owners and staff at the following venues which generated the funds which have led to these published grants being made: **Rosie O'Grady's Irish Pub, Welcome Bay Sports Bar, McSwiggans Irish Pub, Bureta Bar & Eatery, Bundy's, The Matua.**

Adastra Foundation	\$20,000
Age Concern Tauranga Inc	\$10,000
Alan Duff Charitable Foundation	\$5,000
Alzheimers Soc Tauranga Inc	\$15,000
Amped4Life Trust Inc	\$8,000
Aquinas College	\$5,000
Assembly of God (Tauranga) Trust Board	\$3,000
Asthma & Respiratory Management Inc - BoP	\$3,500
BoP Major Squash Events Inc	\$48,000
Basketball Pacific Inc	\$10,000
Bay of Plenty Badminton Assn Inc	\$2,000
Bay of Plenty Cricket Assn Inc	\$40,000
Bay of Plenty Dragon Boat Club Inc	\$2,500
Bay of Plenty Golf Inc	\$5,000
Bay of Plenty Multiple Sclerosis Soc Inc	\$10,000
Bay of Plenty Pipes & Drums Inc	\$8,000
Bay of Plenty Rowing Assn	\$10,000
Bay of Plenty Rugby Union Inc	\$80,000
Bay of Plenty Sailing Academy Trust	\$8,000
Bay of Plenty Symphonia Inc	\$2,480
Bay Oval Trust	\$170,000
Beyond Imagination Trust	\$1,951
Blue Rovers Junior Football Club Inc	\$8,000
Bowls NZ Inc	\$5,000
Bowls Tauranga South Inc	\$2,795
Breast Cancer Support Service Tauranga Trust	\$12,000
Brookfield School	\$8,600
Canoe Slalom Bay of Plenty Inc	\$15,000
Canoe Slalom NZ Inc	\$5,000
Canteen - Bay of Plenty	\$10,000
Catholic Family Support Services	\$2,000
CCS Disability Action Bay of Plenty Inc	\$20,000
City of Tauranga Pipe Band Inc	\$5,000
Cochlear Implant Foundation of NZ Inc	\$20,000
Cool Bananas Youthwork Trust	\$5,000
Croquet Mount Maunganui Inc	\$5,000
Deaf Aotearoa Holdings Ltd	\$8,000

Detour Theatre Trust	\$5,000	Order of St John Central Region Trust Board	\$40,000	Tauranga Model Aircraft Club Inc	\$8,000
Diabetes Help Tauranga Inc	\$7,200	Otumoetai Cadets Cricket Club	\$4,000	Tauranga Model Railway Club Inc	\$1,802
FPS Western Bay of Plenty Trust	\$600	Otumoetai College	\$7,500	Tauranga Musical Theatre Inc	\$10,000
Family Support Trust	\$2,000	Otumoetai Eels Rugby League Club Inc	\$8,000	Tauranga Parents Centre Inc	\$2,000
Gate Pa Indoor Bowls Club Inc	\$1,000	Otumoetai Football Club Inc	\$10,000	Tauranga Performing Arts Competitions Soc Inc	\$10,000
Get Smart Tauranga Trust	\$5,000	Otumoetai Golf Club Inc	\$50,000	Tauranga Pistol Club Inc	\$5,000
Greerton Amateur Swimming Club Inc	\$6,000	Otumoetai Intermediate School	\$5,000	Tauranga Primary School	\$5,000
Greerton Marist Recreation & Community Sports Club Inc	\$5,000	Otumoetai Primary School	\$10,000	Tauranga Rowing Club Inc	\$3,000
Grief Support Services Inc	\$10,000	Otumoetai Sports and Recreation Club Inc.	\$15,000	Tauranga Senior Citizens Club Inc	\$2,500
Habitat for Humanity (Tauranga) Ltd	\$8,000	Otumoetai Swimming Club	\$10,000	Tauranga Soc of Artists Inc	\$1,500
Harbourside Netball Centre Inc	\$25,000	Otumoetai Tennis Club Inc	\$10,000	Tauranga Special School	\$10,000
Headway Brain Injury Assn BoP Inc	\$10,000	Pahoia School	\$5,000	Tauranga Sports Club Inc	\$10,000
Homes of Hope Charitable Trust	\$8,840	Papamoa Bulldogs Rugby League and Sports Club Inc	\$20,000	Tauranga Sports Junior Rugby Club Inc	\$4,000
House of Science Tauranga Charitable Trust	\$25,000	Papamoa Rugby Club Inc	\$14,000	Tauranga Squash Rackets Club Inc	\$30,680
IHCNZ Inc - Idea Services - Tauranga	\$6,000	Papamoa Surf Lifesaving Club Inc	\$20,000	Tauranga Village Radio Museum Inc	\$5,000
Impact Gymsport Academy	\$3,000	Papamoa Swimming Club Inc	\$10,000	Tauranga Youth Development Team	\$5,000
Judea Community Sports Club Inc	\$5,000	Papamoa Toy Library Inc	\$5,000	Taurangas Christmas in the Park Charitable Trust	\$8,000
Katikati Squash Rackets Club Inc	\$2,822	Papamoa Volunteer Fire Brigade	\$25,000	Te Kura Kaupapa Maori o Otepou	\$15,000
Life Education Trust NZ Inc	\$10,000	Parafed Bay of Plenty Inc	\$20,000	Team Shorebreak Inc	\$2,000
Life Education Trust Western Bay of Plenty Region	\$15,000	People First NZ Inc - Midland Region	\$360	The Parkinsonism Soc of NZ Inc - Tauranga	\$15,000
ME / CFS Support (BoP) Inc	\$5,000	Project Litefoot Trust	\$8,768	Turning Point Trust	\$10,000
Manaaki Te Awanui Charitable Trust	\$1,500	Rangataua Sports & Cultural Club Inc	\$3,256	Upper Central Zone of NZ R L Inc	\$40,000
Matakana Island Recreation & Community Inc	\$4,000	Royal NZ Plunket Soc Inc	\$15,000	Volunteer Western Bay of Plenty	\$21,000
Merivale Community Garden Inc	\$1,476	SILC Charitable Trust	\$15,000	WBoPPA - Papamoa Playcentre	\$5,000
Midlands Hockey Inc	\$15,000	Scholars Pro Musica Inc	\$5,000	WBoPPA - Tauriko Playcentre	\$2,500
Mount Maunganui Aquatic Centre Trust	\$8,000	School for Young Parents Tauranga Soc Inc	\$2,000	Waiapu Anglican Social Services Trust - The Kauri Centre	\$5,000
Mount Maunganui Badminton Club Inc	\$3,835	Shakti Ethnic Womens Support Group Central Region Inc	\$5,000	Waikato Bay of Plenty Judo Assn Inc	\$10,000
Mount Maunganui Music School Charitable Trust	\$8,000	SPELD NZ Inc	\$1,500	Waipuna Football Club Inc	\$4,500
Mount Maunganui Sport Fishing Club Inc	\$932	Sport BoP Charitable Trust	\$25,000	Young Mariners of NZ Inc - Tauranga	\$5,000
Mount Maunganui Sports Club Inc	\$20,000	Squash Bay of Plenty Inc	\$10,000	Youth Development Trust Western Bay of Plenty	\$60,000
Mt Maunganui Amateur Swimming Club Inc	\$8,000	Sydenham Botanic Park Funding Trust	\$5,000	Youth Search and Rescue Tauranga Trust	\$10,000
Mt Maunganui College	\$5,000	TRFKA - Botanical Road Kindergarten	\$3,000		
Mt Maunganui Junior Football Club Inc	\$3,775	TRFKA - Papamoa Kindergarten	\$5,000		
Mt Maunganui Lifeguard Service Inc	\$35,000	Talk Link Trust	\$1,000		
Mt Maunganui Tennis Club Inc	\$2,500	Tarnished Frocks & Divas Charitable Trust	\$2,500		
Mt Maunganui Toy Library	\$7,500	Tauranga - BoP Petanque Assn Inc	\$5,000		
NZ Council for Sailing for the Blind and Vision Impaired Inc	\$20,000	Tauranga Agricultural and Pastoral Assc	\$5,000		
NZ Country Music Star Awards (1994) Inc	\$5,000	Tauranga Amateur Swimming & Lifesaving Club	\$6,000		
NZ Deerstalkers Assn BoP Branch	\$7,000	Tauranga Arts Festival Trust	\$7,000		
NZ Garden & Art Fest Trust	\$15,000	Tauranga BMX Club Inc	\$6,000		
NZ Golf Inc	\$15,000	Tauranga Boys College	\$5,000		
NZ Masters Billiards & Snooker Assn Inc	\$2,000	Tauranga Bridge Club Inc	\$5,000		
NZ Riding for the Disabled Assn Inc	\$7,500	Tauranga City Basketball Assn Inc	\$20,000		
National Heart Foundation of NZ	\$10,416	Tauranga City Elim Church Trust	\$15,000		
Netball Waikato Bay of Plenty Zone Inc	\$30,000	Tauranga City United AFC Inc	\$10,000		
Ngatuhua Lodge Outdoor Education Soc Inc	\$10,000	Tauranga Civic Choir	\$5,000		
No 3 District Fed of NZ Soccer Inc	\$25,000	Tauranga Community Housing Trust	\$10,000		
Northern Districts Cricket Assn Inc	\$25,000	Tauranga Croquet Club Inc	\$3,000		
Omanu Beach Surf Life Saving Club Inc	\$14,554	Tauranga Environment Centre Charitable Trust	\$8,000		
Omanu Bowling Club Inc	\$6,000	Tauranga Evergreen Softball Club Inc	\$2,000		
Omanu Golf Club Inc	\$7,000	Tauranga Indoor Bowls Assn Inc	\$17,000		
Optionz Brain Rehabilitation & Recovery Trust - Tauranga	\$10,000	Tauranga Jazz Soc Inc	\$15,000		
		Tauranga Lawn Tennis Club Inc	\$5,000		

### THAMES-COROMANDEL

The Lion Foundation acknowledges the outstanding contribution of the owners and staff at the following venues which generated the funds which have led to these published grants being made: **Bucks Sports Bar & Grill, Kopu Station Hotel, Palms Tavern.**

Arts Collective Incorporated Society Whangamata	\$4,100
Coastguard Northern Region Inc	\$10,000
Coromandel Independent Living Trust	\$10,000
Family Safety Services	\$2,500
Matatoki School	\$1,000
Moana House	\$5,000
Netball Waikato Bay of Plenty Zone Inc	\$15,000
No 3 District Fed of NZ Soccer Inc	\$5,000
Northern Districts Cricket Assn Inc	\$10,000
Parawai School	\$30,000
Pauanui Surf Life Saving Club Inc	\$8,018
Project Kiwi Trust	\$2,000
SANZ - Thames Scout Group	\$3,719
Surf Life Saving NZ Inc - Eastern Region	\$30,000

### GRANT N° 9016313

House of Science Tauranga

## Our next great discovery could come from one of these geniuses

House of Science is a nationwide programme that nurtures curiosity in all ages, and Tauranga's House of Science, which opened in 2014, was the country's first. It pursues a vision of raising scientific literacy for all ages, ethnicities and communities with a wide range of activities. These include holiday programmes in robotics, after school explorations of fossils and forensics, and learning kits for schools that are loaded with hands-on experiments. This is where DIY scientists and professional development programmes rub shoulders, and we think it's fantastic.





GRANT N° 9008038

Thames Skate Park



# Skaters flock to terrific Thames venue

After years of planning, Thames skaters and scooter riders have a purpose-built skate park where they can test their skills safely. With mini-ramps, a quarter pipe and other features, it's a facility that's equal to the best in the country, and there's still space to make it even bigger! The Lion Foundation congratulates the local council on its efforts to provide a family-friendly environment where children and young people can practice a sport they love, and can see already how popular an attraction it's going to be.



TVCPA - Thames-Parawai Playcentre	\$1,717
TVCPA - Whangamata Playcentre	\$1,255
Te Whanau Waka Ama O Whangamata	\$20,000
Thames Community Centre Trust	\$2,560
Thames High School	\$2,936
Thames South School	\$10,000
Thames Tennis Club Inc	\$5,000
Thames Troubadours Leisure Marching Team Inc	\$1,090
Thames Valley Rugby Football Union Inc	\$6,000
True Colours Charitable Trust	\$3,000
Turua Playcentre	\$1,071
Waikato Badminton Assn Inc	\$5,000
Waikato Paraplegic and Physically Disabled Assn Inc	\$10,000
Waikato Valley Cricket Assn Inc	\$2,000
Whangamata Community Services Trust	\$7,500
Whangamata Croquet Club Inc	\$2,000
Whangamata Road Riders Motorcycle Club 2013	\$1,692
Whangamata Rugby & Sports Club Inc	\$15,000
Whangamata Summer Festival Inc	\$10,000
Whangamata Surf Life Saving Club Inc	\$15,000

## WAIKATO

The Lion Foundation acknowledges the outstanding contribution of the owners and staff at the following venues which generated the funds which have led to these published grants being made: **Taupiri Tavern, Essex Arms.**

Adastra Foundation	\$10,000
Alan Duff Charitable Foundation	\$5,000
Alzheimers Waikato Charitable Trust	\$5,000
Blue Light Ventures - North Waikato	\$10,000
Bush Tramway Club Inc	\$5,000
Camp Quality NZ Inc	\$2,000
Cystic Fibrosis Assn of NZ - Waikato Branch	\$1,593
Get Kids Active Charitable Trust	\$2,000
Gordonton Pony Club Inc	\$3,000
Hukanui Golf Club Inc	\$15,000
Huntly Bridge Club Inc	\$10,000
Huntly College	\$14,000
Huntly College Old Boys Rugby Football Club Inc	\$2,007
Huntly Primary School	\$2,173
Kia Ora Netball Club Inc	\$5,925
Kiribati Waikato Assn Inc	\$700
Menzshed Huntly Inc	\$7,500
Motor Neurone Disease Assn of NZ Inc - Waikato Branch	\$4,000
NZ Fed of Young Farmers Clubs Inc	\$2,500
NZ Jet Sprint Assn Inc	\$2,000
NZ Show Horse Council Inc	\$4,500
Netball Waikato Bay of Plenty Zone Inc	\$25,000
Ngaruawahia Community Youth Holiday Programme	\$10,000
Ngaruawahia Golf Club Inc	\$5,000
Ngaruawahia High School	\$10,700
Ngaruawahia Primary School	\$3,685
Ngaruawahia Rugby League Football Club Inc	\$51,000
Ngaruawahia United A F C Inc	\$15,000
Northern Districts Cricket Assn Inc	\$10,000

Optionz Brain Rehabilitation & Recovery Trust - Hamilton	\$3,000
Order of St John Central Region Trust Board	\$20,000
Orienteering Waikato Inc	\$1,000
Perry Outdoor Education Trust	\$70,000
Project Litefoot Trust	\$5,000
Royal NZ Plunket Soc Inc	\$7,500
Sport Waikato Education Trust	\$20,000
Squash Waikato Inc	\$7,500
Talk Link Trust	\$2,000
Taupiri Bowling Club Inc	\$2,000
Taupiri Rugby Football Club Inc	\$29,460
Te Awa River Ride Charitable Trust	\$40,000
True Colours Charitable Trust	\$3,000
Twin Rivers Arts Council (Ngaruawahia) Inc	\$20,000
WKA - Newcastle Kindergarten	\$10,000
Waikato Area Pony Club	\$840
Waikato Basketball Council Inc	\$10,000
Waikato Hockey Charitable Trust	\$10,000
Waikato Paraplegic and Physically Disabled Assn Inc	\$10,000
Waikato Rugby Union Inc	\$20,000
Waikato Valley Cricket Assn Inc	\$2,000
Waikato Youth Empowerment Trust	\$20,000

## WAITOMO

The Lion Foundation acknowledges the outstanding contribution of the owners and staff at the following venues which generated the funds which have led to these published grants being made: **The Riverside.**

King Country Rugby Football Union Inc	\$40,000
Netball Waikato Bay of Plenty Zone Inc	\$10,000
Ngati Maniapoto Marae Pact Trust Inc	\$25,000
North King Country Motor Cycle Club Inc	\$15,000
Orienteering Waikato Inc	\$1,000
St Josephs School - Te Kuiti	\$2,243
Te Kuiti 4H Community Trust Board	\$2,000
Te Kuiti Amateur Swimming Club Inc	\$5,472
Te Kuiti Community House Trust	\$8,000
Te Kuiti Squash Racquet Club Inc	\$15,000
Waitete Rugby Football Club Inc	\$10,000
Waitomo Indoor Sports Centre Inc	\$5,000

## WESTERN BAY OF PLENTY

The Lion Foundation acknowledges the outstanding contribution of the owners and staff at the following venues which generated the funds which have led to these published grants being made: **The Boohai, Te Puna Tavern, Te Puke Hotel.**

Adastra Foundation	\$10,000
Arohanui Art and Education Trust	\$7,000
Auckland District Kidney Soc Inc	\$5,000
Bay of Plenty Badminton Assn Inc	\$2,000
Bay of Plenty Cricket Assn Inc	\$20,000
Bay of Plenty Rugby Union Inc	\$10,000
CNZ - Te Puke	\$500
Canoe Slalom NZ Inc	\$10,000

Get Kids Active Charitable Trust	\$3,000
Katikati Croquet Club Inc	\$800
ME / CFS Support (BoP) Inc	\$5,000
Maketu Volunteer Coastguard Inc	\$10,000
Matakana Island Recreation & Community Inc	\$4,000
Netball Waikato Bay of Plenty Zone Inc	\$10,000
Northern Districts Cricket Assn Inc	\$20,000
Orchard Community Trust	\$10,000
Order of St John Central Region Trust Board	\$20,000
Otumoetai Te Puna Pony Club	\$2,040
Parafed Bay of Plenty Inc	\$10,000
Pongakawa School	\$8,000
Royal NZ Plunket Soc Inc	\$10,000
SANZ - Eastern Waikato Zone	\$2,250
Sport BoP Charitable Trust	\$25,000
Talk Link Trust	\$2,000
Te Awanui Hauora Trust	\$10,000
Te Kura O Te Moutere O Matakana	\$4,000
Te Puke & District Highland Pipe Band Inc	\$2,000
Te Puke & District Highland Pipe Band Inc	\$5,000
Te Puke Amateur Radio Club Inc	\$1,500
Te Puke Badminton Club (2010) Inc	\$1,687
Te Puke Gymsport Inc	\$11,200
Te Puke Lawn Tennis Club Inc	\$20,000
Te Puke Sports & Recreation Club Inc	\$15,000
Te Puke Squash Rackets Club Inc	\$3,240
Te Puke Tigers Rugby League Club Inc	\$8,000
Te Puke Toy Library Inc	\$4,364
Te Puke United Football Club Inc	\$2,560
Te Puke War Memorial Hall Soc Inc	\$7,133
Te Puna Quarry Park Soc Inc	\$7,500
Te Puna School	\$10,000
Variety - The Children's Charity Inc	\$5,000
WBoPPA - Te Puke	\$4,500
Waihi Beach Cycle Trails Charitable Trust	\$25,000
Waipuna Hospice Inc	\$40,000
Whakamarama School	\$5,000

## WHAKATANE

The Lion Foundation acknowledges the outstanding contribution of the owners and staff at the following venues which generated the funds which have led to these published grants being made: **Murupara Hotel, The Quart House Bar, Plains Hotel.**

Alan Duff Charitable Foundation	\$10,000
Alzheimers Society Eastern Bay of Plenty Inc	\$10,000
BoP Indoor Bowls Centre Inc	\$4,000
BoP Motorcycle Club	\$2,000
Bay of Plenty Badminton Assn Inc	\$5,000
Bay of Plenty Cricket Assn Inc	\$25,000
Bay of Plenty Rowing Assn	\$10,000
Bay of Plenty Rugby Union Inc	\$80,000
Central Bay of Plenty Hockey Assn	\$5,475
Citizens Advice Bureau - Whakatane	\$10,000
Clothing Project	\$4,000
Condor Rugby Football Club Inc	\$3,250
E BoP P A - Edgcombe Playcentre	\$20,000
Eastern Bay of Plenty Rugby Sub-Union Inc	\$6,065



# Meet some of our operators

## RHONDA WEBB

### The Plains Hotel (Edgecumbe)

Rhonda and her husband Grant took on The Plains Hotel 19 years ago and love being part of a community that genuinely cares about each other. Rhonda enjoys being involved in an industry where the working environment is fun and social, particularly in a close-knit town like Edgecumbe. The flooding in April demonstrated just how giving the people in the town are. Rhonda is proud that funds raised at The Plains Hotel are being used to rebuild community facilities across Edgecumbe. It's this focus on returning funds locally that keeps Rhonda and Grant loyal to The Lion Foundation.



**THE LION FOUNDATION**  
Here for good

Kahutia Bowling Club Inc	\$3,000
Life Education Trust Gisborne	\$5,000
Longbush Ecological Trust	\$5,000
Makaraka School	\$2,000
Makarika School	\$1,771
Matapuna Trust	\$10,000
Midway Surf Life Saving Club Gisborne Inc	\$10,000
No 14 (City of Gisborne) Squadron	
Air Training Corps	\$3,000
Poverty Bay Blues Inc	\$3,000
Poverty Bay East Coast Indoor Bowls Assn Inc	\$3,900
Poverty Bay Hockey Assn Inc	\$8,000
Poverty Bay Rugby Football Union Inc	\$10,000
Project Litefoot Trust	\$5,575
RKA - Riverdale Kindergarten	\$838
Radio Ngati Porou	\$8,000
Raparapaririki Charitable Trust	\$3,200
Riverdale School (Gisborne)	\$7,359
Ruatoria Taekwondo Club Inc	\$1,410
Special Olympics Tairahiti	\$1,750
St Marys Catholic School - Gisborne	\$4,470
Supergrans Tairahiti Trust	\$6,000
Swim for Life Tairahiti	\$8,000
Swimming Hawkes Bay Poverty Bay Inc	\$2,000
Tairahiti Community Law Trust	\$1,000
Tairahiti Softball Assn	\$7,000
Te Kapa Haka O Whangara Mai Tawhiti Trust	\$6,500
Te Kohanga Reo O Te Whanau a Hinetapora	\$4,000
Te Wharau School	\$10,000
Tikitiki School	\$15,000
Waikanae Surf Lifesaving Club Inc	\$15,000
Wainui Beach School	\$2,000
Wainui Surf Life Saving Club Inc	\$15,000

## HASTINGS

The Lion Foundation acknowledges the outstanding contribution of the owners and staff at the following venues which generated the funds which have led to these published grants being made: **Horse and Hound Hastings, Stortford Lodge Social Club.**

AFB Lusk Club Home Trust	\$6,054
Age Concern Havelock North Inc	\$1,000
All In or Nothing Inc	\$15,000
Alzheimers Soc Hastings Inc	\$10,000
Art Hawkes Bay Inc	\$2,300
Asthma & Respiratory Hawke's Bay Services Trust	\$15,000
Basketball Hawkes Bay Inc	\$100,000
Bay City Rollers Inc	\$2,000
Cancer Soc of NZ Inc - Hawkes Bay	\$8,500
Canteen - Hawkes Bay	\$5,000
Central Districts Cricket Assn Inc	\$10,000
Citizens Advice Bureau Inc - Hastings	\$2,667
City of Hastings Pipe Band	\$2,615
Cornwall Cricket Club Hastings Inc	\$8,000
Creative Hastings Inc	\$5,000
Cystic Fibrosis Assn of NZ Inc - Hawkes Bay Branch	\$1,200
Deco Bay Brass Inc	\$2,500
Disability Resource Centre Hawkes Bay Trust	\$10,000
Ebbett Park School	\$850
Eventing Hawkes Bay	\$3,000
Flaxmere College	\$10,000
Flaxmere Primary School	\$6,000
Frimley Primary School	\$4,000
HB Tenpin Bowling Foundation	\$700
HFKA - Frimley Park Kindergarten	\$7,000
HFKA - Havelock North Central Kindergarten	\$4,500
HFKA - Mahora Kindergarten	\$3,000
HFKA - Mayfair Kindergarten	\$3,400
Hastings Air Training Corps Youth Training Charitable Trust	\$3,000
Hastings and Districts Schools Mowing Trust Board	\$4,000
Hastings Boys High School	\$9,000
Hastings Central School	\$3,500
Hastings Gymnastics Inc	\$1,000
Hastings Tennis & Squash Club Inc	\$4,200
Havelock North Intermediate	\$2,000
Havelock North Junior Rugby Club Inc	\$2,200
Hawkes Bay Agricultural & Pastoral Soc Inc	\$15,000
Hawkes Bay Basketball Foundation Inc	\$20,000
Hawkes Bay Cricket Assn Inc	\$5,000
Hawkes Bay Dog Training Club Inc	\$1,450
Hawkes Bay Gisborne Athletics Childrens Committee	\$3,000
Hawkes Bay Jet Sports Club Inc	\$2,000
Hawkes Bay Kayak Racing Inc	\$3,000
Hawkes Bay Mens Evergreen Softball Club Inc	\$2,600
Hawkes Bay Multisports Club Inc	\$1,300
Hawkes Bay Polo Club Inc	\$3,000
Hawkes Bay Regional Sports Park Trust	\$10,000
Hawkes Bay Rescue Helicopter Trust	\$15,000
Hawkes Bay Rowing Club Inc	\$6,000
Hawkes Bay Softball Assn Inc	\$8,000
Hawkes Bay Womens Evergreens Softball Club Inc	\$2,000
Heretaunga Croquet Club Inc	\$5,000

Edgecumbe College	\$20,000
Edgecumbe Primary School	\$3,208
Edgecumbe Sports Club Inc	\$25,000
Edgecumbe Squash & Tennis Club Inc	\$30,000
Galatea Playcentre	\$20,000
Galatea Rugby and Sports Club Inc	\$35,971
Galatea School	\$20,000
Heart Kids NZ Inc	\$10,000
Life Education Trust Eastern Bay of Plenty	\$6,051
Marist Rugby & Sports Club Whakatane Inc	\$25,000
Mataatua Sports Trust	\$7,500
Matata Rugby & Sports Club Inc	\$4,000
Murupara Budget Advisory Services Trust	\$17,634
NZ Emergency Services Solutions	\$10,000
Netball Waikato Bay of Plenty Zone Inc	\$30,000
No 3 District Fed of NZ Soccer Inc	\$25,000
Northern Districts Cricket Assn Inc	\$50,000
Ohope Junior Soccer Club	\$4,477
Order of St John Central Region Trust Board	\$50,000
Parafed Bay of Plenty Inc	\$10,000
Paroa Rugby & Sports Club Inc	\$20,000
Project Litefoot Trust	\$5,000
Royal NZ Plunket Soc Inc	\$15,000
Sport BoP Charitable Trust	\$108,000
Squash Bay of Plenty Inc	\$5,000
Surf Life Saving NZ Inc - Eastern Region	\$10,000
Taneatua Rugby Union Football Club Inc	\$10,000
Taneatua School	\$5,000
Tauranga City Basketball Assn Inc	\$10,000
Tawera Bilingual School	\$10,000
Te Kura Kaupapa Maori O Te Orini Ki Ngatiawaa	\$10,000
Te Kura o Te Paroa	\$15,000
Te Parahia Trust	\$10,000
Trident High School	\$15,000
Variety - The Children's Charity Inc	\$5,000
Whakatane Baptist Community Charitable Trust	\$5,000
Whakatane Citizens Band Inc	\$8,000
Whakatane District Council	\$70,000
Whakatane Golf Club Inc	\$10,000
Whakatane High School	\$21,600
Whakatane Lawn Tennis Club Inc	\$12,970
Whakatane Squash Club Inc	\$36,000
Whakatane Town Assn Football Club	\$10,000
Whanau Ahwina Womens Refuge Inc	\$12,870

Carter Soc Inc	\$5,000
Carterton Film Soc Inc	\$1,500
Wairarapa A & P Soc Inc	\$3,500
Wairarapa Tennis Assn	\$601
Wellington Regional Sports Education Trust	\$5,000

## CENTRAL HAWKES BAY

The Lion Foundation acknowledges the outstanding contribution of the owners and staff at the following venues which generated the funds which have led to these published grants being made: **Crossroads.**

Basketball Hawkes Bay Inc	\$.5,000
Central Connect Whare Manaaki Inc	\$1,000
Central Hawkes Bay Budget Services	\$8,000
Central Hawkes Bay Hockey Assn Inc	\$2,000
Hawkes Bay Cricket Assn Inc	\$5,000
Pleroma Trust	\$2,500
St Josephs School - Waipukurau	\$2,980
Te Aute College	\$10,000

## GISBORNE

The Lion Foundation acknowledges the outstanding contribution of the owners and staff at the following venues which generated the funds which have led to these published grants being made: **Ruatoria Hotel, Shipwreck.**

Alzheimers Soc Gisborne Inc	\$10,000
Bowls Gisborne - East Coast Inc	\$1,600
Campion College	\$6,000
Community Gisborne Charitable Trust	\$2,000
East Cape Volunteer Coastguard Assn Inc	\$8,000
East Coast Rugby Football Union Inc	\$3,200
Eastland Junior Football Club Inc	\$5,000
Eastland Sports Foundation Education Trust Inc	\$50,000
Eastwoodhill Trust Board	\$7,000
Equestrian Sport NZ - Gisborne Branch	\$3,000
GfKA - Knox Street Kindergarten	\$4,500
GfKA - Paikea Kindergarten	\$3,000
Gisborne Basketball Assn Inc	\$5,000
Gisborne Boardriders Club Inc	\$10,000
Gisborne Civic Brass Band Inc	\$1,800
Gisborne Gymnastics Club Inc	\$1,500
Gisborne International Music Competition Charitable Trust	\$3,000
Gisborne Netball Centre Inc	\$7,000
Gisborne Riding for the Disabled Inc	\$6,000
Gisborne Tennis Club Inc	\$6,000
Gisborne Toy Library Inc	\$1,494
Gisborne Trampoline Club Inc	\$2,800
Gisborne Volunteer Centre Inc	\$7,000
HSOB Sports Club Inc	\$10,000
Hawkes Bay Gisborne Athletics Childrens Committee	\$1,000
Ka Pai Kaiti Trust	\$5,000

## Central

### CARTERTON

The Lion Foundation acknowledges the outstanding contribution of the owners and staff at the following venues which generated the funds which have led to these published grants being made: **Ev's Bar.**

Arthritis Foundation of NZ Inc	\$5,000
--------------------------------	---------

GRANT N° 9016545

Alzheimer's Society Manawatu



# Alzheimer's Society gains a new set of wheels

The Alzheimer's Society in Manawatu helps sufferers and their families with support, education, information and related services. Alzheimer's and the dementia it causes are creating a huge burden for families who have to nurse loved ones through this disease, with isolation being a particular problem in rural regions like Manawatu where communities depend on a mobile service. That's why the Lion Foundation provided funding towards replacing their worn-out van, so the 1500 people it reaches every year will still benefit from that support.



Heretaunga Sundevils Swim Team Inc	\$2,000
Heretaunga Womens Centre Inc	\$5,000
Kia Toa Bowling Club Inc - Hastings	\$1,649
Life Education Trust - Hawkes Bay	\$10,000
Limit (Hawkes Bay) Trust	\$6,000
Mahora School	\$1,100
NZ Council of Victim Support Groups Inc	\$2,324
NZ Family and Fostercare Fed Inc	\$5,000
NZ Guru Ravidas Sabha Hastings Inc	\$2,500
NZ Jet Sprint Assn Inc	\$3,000
Napier City Council	\$20,000
National Male Choir of NZ Inc	\$2,250
Order of St. John Central Region Trust Board	\$20,000
Piping & Dancing Assn of NZ Inc Hawkes Bay	\$3,000
Presbyterian Support East Coast	\$8,000
Prima Volta Charitable Trust	\$5,000
Project Litefoot Trust	\$5,575
Public Dreams Charitable Trust	\$2,340
Pukehomoamoao School	\$5,000
Ramblers Cycling Club Inc	\$2,000
Regional Indoor Sports & Events Centre Inc	\$10,000
Royal NZ Plunket Soc Inc	\$10,000
SANZ - Hawlock North Scout Group	\$2,000
Saints Softball Club Inc	\$1,800
Soc of St Vincent de Paul Hastings Area Council	\$2,854
Sport Hawkes Bay Inc	\$30,000
Sportslink Charitable Trust	\$4,000
St Johns College - Hastings	\$5,000
Swimming Hawkes Bay Poverty Bay Inc	\$2,000
Tamatea Rugby League Club Inc	\$2,800
Taniwha Tumeke Te Kohanga Reo	\$2,000
Te Mata School	\$3,000
Te Matau a Maui Voyaging Trust	\$4,000
Te Taitimu Trust	\$4,500
Te Whakaritorito Trust	\$1,650
Twyford School	\$6,000
Waiohiki Marae Board of Trustees	\$15,000
Waipukurau Blue Light Ventures	\$2,000
YMCA - Hawkes Bay	\$8,300
Youth Development Trust Hawkes Bay	\$12,000
YouthQuest Hawkes Bay Charitable Trust	\$15,000
Zeal Education Trust	\$15,000

Hutt City Council	\$5,000
Kapiti Basketball Assn Inc	\$3,000
Kapiti BMX Club Inc	\$10,000
Kapiti Bowling Club Inc	\$2,000
Kapiti Catholic Youth Trust	\$8,000
Kapiti Coast District Council - Arts Trail	\$5,000
Kapiti Coast Rugby League Club (2004) Inc	\$3,381
Kapiti College	\$3,000
Kapiti Judo Club Inc	\$3,000
Kapiti Living Without Violence Inc	\$4,000
Kapiti Netball Assn Inc	\$3,000
Kapiti Old Boys Cricket Club Inc	\$5,000
Kapiti Playhouse Inc	\$5,000
Kapiti Softball Club Inc	\$871
Kapiti Toy Library Inc	\$6,000
Kapiti US Marines Trust	\$2,000
Kapiti Womens Health Collective Inc	\$8,000
Kidz Need Dadz Charitable Trust Wellington Inc	\$2,500
La Leche League NZ Inc	\$3,209
Life Education Trust Kapiti Horowhenua	\$10,000
Mary Potter Hospice Foundation Inc	\$10,000
Paekakariki Surf Lifeguards Inc	\$10,000
Paraparaumu Beach Bowling Club Inc	\$5,000
Paraparaumu Beach School	\$2,500
Paraparaumu College	\$4,000
Paraparaumu Playcentre	\$1,929
Paraparaumu Rugby Football Club Inc	\$5,000
Paraparaumu School	\$8,000
Parkinsonism Soc Kapiti/Horowhenua Inc	\$3,000
Raumati Beach School	\$5,000
Raumati South Bowling Club Inc	\$3,000
Raumati South School	\$1,400
Raumati Swimming Club Inc	\$15,000
SANZ - Paraparaumu Scout Group	\$893
St Patricks School Paraparaumu	\$4,000
WMFKA - Raumati South	\$2,000
WMFKA - Waikanae Kindergarten	\$1,766
Waikanae Golf Club Inc	\$5,000
Waikanae Music Soc Inc	\$1,058
Wellington Museums Trust Inc	\$10,000
Wellington Regional Sports Education Trust	\$5,000
Youthquest Kapiti Charitable Trust	\$10,000
Zeal Education Trust	\$15,000

Waterside Karori AFC Inc	\$90,000
Wellington Free Ambulance Service Inc	\$20,000
Wilton Bowling Club Inc	\$5,000

## NAPIER

The Lion Foundation acknowledges the outstanding contribution of the owners and staff at the following venues which generated the funds which have led to these published grants being made: **Masonic Hotel, The Horse And Harvest Family Restaurant And Ale House.**

Age Concern Napier Inc	\$3,000
Ahuriri Sports Soc Inc	\$4,910
Asthma & Respiratory Hawke's Bay Services Trust	\$10,000
Basketball Hawkes Bay Inc	\$55,000
Birthing Hawkes Bay Child & Family Care Trust	\$3,000
Bowls Napier Inc	\$2,500
Bowls Omarunui Inc	\$1,000
Buckingham Guards Marching Team	\$1,400
Burlington Marching Team	\$2,500
Central Districts Hockey Inc	\$4,000
Chamber Music NZ Trust Board	\$3,000
Diabetes Hawkes Bay Inc	\$4,000
Dressage Hawkes Bay (NHB)	\$1,800
Eskview United Football Club Inc	\$984
Farndon Park Committee of Management	\$5,000
Greendale Tennis Club Inc	\$10,000
Hawkes Bay Badminton Assn Inc	\$4,000
Hawkes Bay Branch of the RNZSPCA Inc	\$2,000
Hawkes Bay Caravan and Camping Club Inc	\$4,000
Hawkes Bay Cricket Assn Inc	\$5,000
Hawkes Bay Event Equipment Trust	\$4,000
Hawkes Bay Gisborne Athletics	
Childrens Committee	\$1,000
Hawkes Bay Hockey Assn Inc	\$10,000
Hawkes Bay Orchestra	\$1,700
Hawkes Bay Orchid Soc Inc	\$800
Hawkes Bay Rugby Football Union Inc	\$54,500
Hawkes Bay Rugby Referees Assn	\$4,000
Hawkes Bay Squash Rackets Club Inc	\$7,000
Hawkes Bay United Football Inc	\$6,000
Hawkes Bay Veterans Tennis Club Inc	\$1,325
Hawkes Bay Volunteer Coastguard Inc	\$5,000
HB Cruisers Netball Club Inc	\$1,000
Hearing Assn - Napier Branch Inc	\$3,450
Life Restoration Trust	\$1,000
Maraenui Golf Club Inc	\$5,000
Marching Hawkes Bay	\$531
Meeanee Badminton Club Inc	\$1,500
MENZ Shed Napier Trust	\$5,000
Multicultural Assn Hawkes Bay Inc	\$2,500
NFKA - Pirimai Kindergarten	\$2,000
NFKA - Riversdale Kindergarten	\$1,350
NZ Singing School Trust	\$3,000
NZ Suzuki Institute - Hawkes Bay	\$2,000
Napier Aquahawks Swim Club Inc	\$3,000
Napier Boys High School	\$5,000
Napier Bridge Club Inc	\$1,800
Napier City Council	\$30,000
Napier City Rovers A F C Inc	\$6,000

## HUTT

Hutt Valley Softball Assn Inc	\$334
Netball Hutt Valley Centre Inc	\$334

## KAPITI

The Lion Foundation acknowledges the outstanding contribution of the owners and staff at the following venues which generated the funds which have led to these published grants being made: **Boundary Tap & Kitchen.**

Adult Literacy Aotearoa (Kapiti) Inc	\$10,000
Age Concern Kapiti Coast Inc	\$5,000
Coast Access Radio Trust	\$3,000
Evenzts NZ Trust 2004	\$7,000
Horowhenua Kapiti Cricket Assn Inc	\$10,000
Horowhenua Kapiti Rugby Football Union	\$15,000

## KARORI

The Lion Foundation acknowledges the outstanding contribution of the owners and staff at the following venues which generated the funds which have led to these published grants being made: **The Pickle Jar.**

Brooklyn Smallbore Rifle Club Inc	\$500
Karori Community Toy Library Inc	\$1,400
Karori Junior Cricket Club	\$3,778
Lions Club of Karori Charitable Trust	\$15,000
SANZ - 1st Karori Scout Group	\$28,000
SANZ - Karori West Scout Group	\$2,000
WMFKA - Campbell Kindergarten	\$4,800
WPA - Brooklyn Playcentre	\$326
WPCA - Karori Playcentre	\$3,800
Waterside Karori AFC Inc	\$16,000



Napier Civic Choir Inc	\$4,000	Bike Manawatu Inc	\$5,000	Palmerston North Jets Basketball Inc	\$25,000
Napier Community Foodbank Trust	\$760	Bowls Manawatu Inc	\$3,000	Palmerston North La Leche League	\$1,600
Napier Frivolity Minstrels Inc	\$1,000	Bowls NZ Inc	\$5,000	Palmerston North Methodist Social Services Trust	\$6,500
Napier Girls High School	\$1,820	Brain Injury Assn Central Districts Inc	\$12,000	Palmerston North Operatic Soc Inc	\$10,000
Napier Intermediate School	\$4,000	Camellia House Trust	\$4,900	Palmerston North Squash Club Inc	\$5,780
Napier Marist Football Club Inc	\$2,000	Cancer Soc of NZ Inc - Manawatu	\$15,500	Palmerston North Street Van Inc	\$15,000
Napier Old Boys Marist Cricket Club Inc	\$5,000	Canteen Manawatu	\$8,000	Palmerston North Womens Health Collective	\$2,388
Napier Old Boys Marist Rugby Football Club Inc	\$3,000	Central Districts Cricket Assn Inc	\$20,000	Parentline Manawatu Inc	\$7,000
Napier Operatic Soc Inc	\$5,000	Chamber Music NZ Trust Board	\$7,000	Performing Arts Competitions Assn of NZ Inc	\$15,000
Napier Performing Arts Competition Soc Inc	\$5,000	Community Arts Palmerston North	\$1,000	PN Marist Football Club	\$24,500
Napier Repertory Players Inc	\$2,000	Dynamo Cycling & Sports Club Inc	\$2,065	Poupatate Marae Inc	\$20,000
Napier Safety Trust	\$5,000	Feilding Rugby Football Club Inc	\$3,200	Prisoners Aid & Rehabilitation Soc of Manawatu Inc	\$15,000
Napier Tech Hockey Club Inc	\$3,000	Freyberg Old Boys Rugby Football Club Inc	\$10,213	RKA - Mill Street Kindergarten	\$752
Napier Tech Netball Club Inc	\$2,000	Get Kids Active Charitable Trust	\$6,000	RKA - Milson Kindergarten	\$970
Napier Technical Memorial Brass Band Inc	\$1,000	Glen Oroua School	\$2,266	RKA - Milverton Kindergarten	\$3,000
Napier Technical Old Boys Football Club Inc	\$2,000	Globe Theatre Trust Board	\$4,918	Red Sox Sports Club Inc	\$20,000
Napier Technical Sports and Recreational Org Inc	\$2,000	Heart Kids NZ Inc	\$18,348	Red Sox Sports Club Inc	\$25,000
Napier Weavers Inc	\$1,000	Hockey Manawatu Inc	\$35,000	Rock Quest Charitable Trust	\$4,200
National Youth Drama School	\$4,000	Hokowhitu School	\$2,382	Roslyn Primary School	\$1,070
Nelson Park Lawn Tennis Club	\$2,000	Housing Advice Centre (Palmerston North) Inc	\$2,900	Ross Intermediate School	\$10,000
Nelson Park School	\$4,000	Kiwi West Aquatics Inc	\$3,500	Royal NZ Foundation of the Blind	\$10,000
No 4 District Fed of NZ Football Inc	\$5,000	Kopane School	\$1,500	Royal NZ Plunket Soc Inc	\$16,875
Pacific Surf Life Saving Club Inc	\$1,615	Learning and Growing Together Trust	\$1,380	Ruahine Assn Football Club Inc	\$4,980
Port Hill United Football Club Inc	\$4,000	Life Education Trust NZ Inc	\$4,000	Russell Street School	\$3,429
Prima Volta Charitable Trust	\$5,000	Manawatu Badminton Assn Inc	\$20,000	SANZ - Milson Scout Group	\$1,700
Pukemokimoki Marae Trust	\$9,000	Manawatu Cricket Assn Inc	\$20,000	Samaritans Manawatu Inc	\$10,000
Regional Indoor Sports & Events Centre Inc	\$10,000	Manawatu Gymsports Inc	\$6,000	Shepherds Rest Trust	\$15,000
Reignier Catholic School	\$8,000	Manawatu Home Budgeting Service Inc	\$14,688	Special Olympics Manawatu	\$17,610
Royal NZ Plunket Soc Hawkes Bay Area Inc	\$10,000	Manawatu Multicultural Council Inc.	\$7,000	SPELADD NZ Inc	\$5,500
SANZ - Greendale Tamatea Scout Group	\$2,300	Manawatu Multiple Sclerosis Soc Inc	\$8,000	Sport Manawatu Charitable Trust	\$60,000
Sailability Hawkes Bay Trust	\$1,912	Manawatu Performing Arts Competition Soc Inc	\$5,974	St James Catholic School	\$4,000
Sounds of Hawkes Bay Chorus Inc	\$5,000	Manawatu Petanque Club Inc	\$1,675	St Peters College - Palmerston North	\$10,000
Sport Hawkes Bay Inc	\$30,000	Manawatu Rugby Football League Inc	\$35,000	Surf Life Saving NZ Inc - Central Region	\$10,000
St Patricks School Napier	\$1,500	Manawatu Rugby Football Union Inc	\$50,000	Takaro Assn Football Club Inc	\$7,459
Swimming Hawkes Bay Poverty Bay Inc	\$2,000	Manawatu Scottish Pipe Band Inc	\$4,000	Te Manawa Family Services Charitable Trust	\$6,625
Tamatea High School	\$1,620	Manawatu Scottish Soc of NZ Inc	\$10,000	Te Manawa Museums Trust	\$20,000
Taradale Assn Football Club Inc	\$4,500	Manawatu Striders Inc	\$4,472	Teach Me Trust	\$239
Taradale Cricket Club Inc	\$5,000	Manawatu Supporting Families in Mental Illness	\$15,000	Thistle Caledonian Soc Inc	\$977
Taradale High School	\$5,000	Manawatunes Barbershop Chorus Inc	\$2,300	United Cricket Club Inc.	\$3,000
Taradale Softball Club Inc	\$3,000	Marist Junior Rugby	\$8,000	Wellington Hospitals Foundation	\$20,000
Taradale Sports Assn	\$2,000	Menzshed Manawatu	\$6,424	Youthline Central North Island Inc	\$71,602
Te Taiwhenua O Te Whanganui A Orotu Inc	\$10,000	Mid Central Zone of NZ RL Inc	\$5,000		
Tennis Eastern Inc	\$1,446	Monrad Intermediate School	\$5,000		
Waiohiki Community Charitable Trust	\$5,000	NZ Academy of Highland & National Dancing Inc	\$6,000		
Waiohiki Marae Board of Trustees	\$15,000	NZ Choral Fed Inc Manawatu-Wanganui Region	\$2,000		
Westshore Surf Life Saving Club Inc	\$3,000	NZ Family and Fostercare Fed Inc	\$5,000		
William Colenso College	\$3,000	NZ Golf Inc	\$11,250		
		NZ Hockey Fed Inc	\$10,000		
		NZ Rural Games Trust	\$5,000		
		NZ String Quartet Trust	\$174		
		Northern Club Manawatu Inc	\$5,000		
		Order of St John Central Region Trust Board	\$80,000		
		Palmerston Cricket Club	\$920		
		Palmerston North Amateur Swimming Club	\$2,000		
		Palmerston North Astronomical Soc Inc	\$6,000		
		Palmerston North Boys High School	\$10,000		
		Palmerston North Brass Band Inc	\$10,000		
		Palmerston North Community Services Council Inc	\$2,000		
		Palmerston North Dance Assn Inc	\$1,600		
		Palmerston North Esplanade Scenic Railway Inc	\$2,500		

**PALMERSTON NORTH**

The Lion Foundation acknowledges the outstanding contribution of the owners and staff at the following venues which generated the funds which have led to these published grants being made: *Rex's Bar, The Office, Rosie O'Grady's Palmerston North, Railway Hotel and Legends Bar.*

ACROSS Te Kotahitanga o te Wairua	\$3,000
Alliance Francaise de Palmerston North Inc	\$8,000
Alzheimers Soc Manawatu Inc	\$48,691
Autism NZ Inc	\$20,000

**RANGITIKEI**

The Lion Foundation acknowledges the outstanding contribution of the owners and staff at the following venues which generated the funds which have led to these published grants being made: *Club Hotel Marton, Station Hotel.*

Bulls and District Community Trust	\$894
Central Districts Cricket Assn Inc	\$15,000
Central Squash Assn Inc	\$2,000
Counselling Centre Inc - Marton	\$3,300
Hunterville School	\$2,300
Hunterville Squash Racquets Club Inc	\$1,410
Marton & District Pipe Band & Scottish Soc	\$4,000
Marton Country Music Festival Inc	\$8,000
Marton Croquet Club	\$910
Marton Rugby & Sports Club Inc	\$2,542
Marton School	\$6,000

**GRANT N° 9015653**

**Youthline Central North Island**

**Youthline – working to put the smiles back**

Youthline's scope of services reflects the wide range of issues that teenagers are dealing, and in some cases struggling, with. Fielding calls for help with family violence or abuse, bullying, drugs, sexual matters and mental health requires huge commitment from the compassionate people who staff the phones, meet the young people and provide the support. At the Lion Foundation we believe that Youthline's central North Island staff should be able concentrate on the task of supporting our young people through to adulthood rather than worrying about where the funding comes from. We're proud to help.





Order of St John Central Region Trust Board	\$20,000
Project Marton Inc	\$16,000
Rangitikei College	\$1,620
Rangitikei Hockey Assn Inc	\$4,000
Royal NZ Plunket Soc Inc	\$6,875

**SOUTH WAIRARAPA**

The Lion Foundation acknowledges the outstanding contribution of the owners and staff at the following venues which generated the funds which have led to these published grants being made: **Empire Hotel Featherston.**

Arthritis Foundation of NZ Inc	\$5,000
Featherston Camp Memorial Trust	\$20,000
Featherston Golf Club Inc	\$8,000
Featherston Hockey Club Inc	\$1,000
Featherston Menz Shed	\$4,000
Wairarapa Mathematics Assn Inc	\$778
Wellington Regional Sports Education Trust	\$5,000

**UPPER HUTT**

The Lion Foundation acknowledges the outstanding contribution of the owners and staff at the following venues which generated the funds which have led to these published grants being made: **Tote Pub & Pizza Furnace, Longhorn Steak and Alehouse.**

Akatarawa Scout Group	\$5,000
Alzheimers Wellington Inc	\$3,000
Autism NZ Inc	\$20,000
Birthright Hutt Valley Inc	\$10,000
Citizens Advice Bureau Upper Hutt Inc	\$1,173
Daltons Gym Charitable Trust	\$12,000
Dynamo Cycling & Sports Club Inc	\$2,065
Expressions Arts & Entertainment Trust	\$15,000
HPA - Pinehaven Playcentre	\$3,900
Heart Kids NZ Inc	\$18,346
Hutt City Community Facilities Trust	\$30,000
Hutt City Council	\$20,000
Hutt Valley Softball Assn Inc	\$2,000
Hutt Valley Sports Awards Inc	\$10,000
Hutt Valley Thunderbolts BMX Club Inc	\$20,000
Kaibosh	\$10,000
Life Education Trust NZ Inc	\$4,000
Maidstone Intermediate School	\$3,620
Maidstone Park Charitable Trust	\$20,000
NZ Family and Fostercare Fed Inc	\$5,000
Netball Hutt Valley Centre Inc	\$2,000
Oxford Crescent School	\$4,000
Plateau School	\$4,900
Prison Fellowship of NZ Trust	\$6,817
Riding for the Disabled Hutt Valley Group Inc	\$5,000
Rimutaka Gymsports Inc	\$14,000
Rimutaka Inline Hockey Club	\$4,000
Royal NZ Plunket Soc Inc	\$15,000
Silver Stream Railway Inc	\$1,494
Silverstream Primary School	\$5,000
Squash at Upper Hutt Inc	\$5,000
Swimming Wellington Inc	\$8,500
Tararua Sports Club Inc	\$15,000

# Meet some of our operators

**MATT MCLAUGHLIN**  
Four Kings (Wellington)

Matt has been in hospitality for 30 years, having started by washing dishes at the local Cobb and Co and working his way up to now run his own business. Matt has owned the Four Kings Pub in Wellington for 11 years and became a venue partner of The Lion Foundation 2 years ago. A passionate Wellingtonian with a particular interest in sport, Matt enjoys playing his part in supporting all the great local causes that receive grants.



**THE LION FOUNDATION**  
*Here for good*

Te Omanga Hospice Trust	\$10,000
Timberlea Community House Trust Board	\$1,113
Titiro Whakamua - Looking Forward Inc	\$5,300
Trentham Camp Golf Club Inc	\$2,800
Trentham Sports Centre Trust Inc	\$2,700
Upper Hutt Bowling Club Inc	\$10,000
Upper Hutt City of Song	\$6,000
Upper Hutt Community Rescue Inc	\$6,000
Upper Hutt Community Youth Trust	\$3,674
Upper Hutt Hockey Club Inc	\$8,000
Upper Hutt Maidstone United Netball Club Inc	\$8,000
Upper Hutt Multicultural Council Inc	\$2,500
Upper Hutt Rams Rugby Football Club Inc	\$25,000
Upper Hutt United Cricket Club Inc	\$10,000
WMFKA - Brown Owl Kindergarten	\$6,900
WMFKA - Trentham Kindergarten	\$5,000
Wellington Free Ambulance Service Inc	\$80,000
Wellington Hospitals Foundation	\$20,000
Wellington Museums Trust Inc	\$20,000
Wellington Region Hockey Stadium Trust	\$10,000
Wellington Regional Sports Education Trust	\$26,000
Wellington Vintage Machinery Inc	\$3,000
Writers Plot Readers Read Inc Soc	\$4,000
YMCA of Greater Wellington Inc	\$6,000

**WELLINGTON**

The Lion Foundation acknowledges the outstanding contribution of the owners and staff at the following venues which generated the funds which have led to these published grants being made: **Turbo Bar, The Realm Tavern, Cambridge Hotel, Hotel Bristol, Four Kings.**

2020 Communications Trust	\$8,000
Alzheimers Wellington Inc	\$3,000
Amputee Soc of the Greater Wellington Region Inc	\$3,000
Arcade NZ Live Art Trust	\$4,000
Aro Creative Inc	\$7,500
Athletics Wellington Inc	\$10,000
Autism NZ Inc	\$20,000
Bach Choir Inc	\$1,065
BATS Theatre Ltd	\$10,000
Berhampore Primary School	\$1,900
Big Buddy Mentoring Trust	\$10,000
Birthright Wellington Inc	\$7,000
Brooklyn Toy Library	\$1,000
Burwood Academy Trust	\$5,000
Camp Quality NZ Inc	\$3,000
Cancer Soc of NZ Inc - Wellington	\$30,000
CanSurvive Dragon Boat Team Inc	\$6,000
Capital Blues Inc	\$10,000
Capital City Preschool Charitable Trust	\$1,800

**GRANT N° 9016900**

Wellington Hockey Association

## We're talent spotting for future Black Sticks

The Wellington Hockey Association has supported the game for over 100 years, producing national representatives for the Olympic Games and the World Championships. The association puts its success in developing quality players down to a grassroots approach that nurtures talent from an early age. They run a Small Sticks training programme for boys and girls aged 4–13 years that teaches skills as a fun and exciting introduction to the game. The Lion Foundation sees its support for the Small Sticks and new turf construction as an investment in hockey's future the whole country can cheer along.



Capital Gymnastic Club Inc	\$10,000	Regional Council	\$8,000	Athletics Manawatu Wanganui Inc	\$2,400
Challenge 2000 Trust	\$10,000	SPELD NZ Inc	\$5,000	Athletics Wanganui Inc	\$5,000
Chamber Music NZ Trust Board	\$7,000	Spirit of Rangatahi Charitable Trust	\$6,000	Birthing Wanganui Inc	\$8,000
Changemakers Refugee Forum	\$4,850	Squash Wellington Districts Inc	\$10,000	Bowls Wanganui Inc	\$2,000
Citizens Advice Bureau Wellington Inc	\$12,000	Sri Lanka Assn of NZ Inc	\$2,000	Brain Injury Assn Inc - Whanganui	\$6,000
College Sport Wellington Inc	\$22,000	St Anthonys School	\$10,000	Brunswick School	\$1,569
Community House Whanganui Assn Inc	\$8,000	St Catherines College	\$5,000	Cancer Soc of NZ - Wanganui Rangitikei	
Conch Charitable Trust	\$1,911	St Patricks College Wellington	\$2,000	Waimarino Centre Inc	\$15,406
Concord Rugby Football Club Inc	\$6,250	Stagecraft Theatre Inc	\$4,000	Central Districts Cricket Assn Inc	\$15,000
Creative Capital Arts Trust	\$8,865	Storylines Childrens Literature		Christian Social Services Wanganui	\$9,000
Creative Capital Arts Trust	\$10,000	Charitable Trust of NZ	\$2,500	Churton School	\$2,087
Cricket Wellington Inc	\$45,000	Summer Shakespeare Trust	\$3,000	Citizens Advice Bureau Inc Whanganui	\$6,000
Crossways Community Creche Inc	\$4,000	Supertonic Inc	\$1,500	Coastguard Central Region Inc	\$10,000
Diabetes NZ Wellington Inc	\$7,000	Surf Life Saving NZ Inc - Central Region	\$15,000	Community Legal Advice Whanganui	\$8,000
Dress for Success Wellington Inc	\$13,000	Surf Lifesaving Charitable Trust Inc	\$12,000	Cystic Fibrosis Assn of NZ - Central Districts Branch	\$2,815
Dwell Housing Trust	\$6,000	Swimming NZ Inc	\$10,000	Dynamo Cycling & Sports Club Inc	\$2,065
Eastern Suburbs Cricket Club Inc	\$4,000	Swimming Trust of Wellington	\$35,000	Gonville Bowling Club	\$1,440
Environmental Education for		Swimming Wellington Inc	\$8,500	Heart Kids NZ Inc	\$18,346
Resource Sustainability Trust	\$4,750	Te Kaahui Kohanga Reo	\$9,000	Hockey Wanganui Inc	\$17,875
Family Space Charitable Trust	\$8,000	Te Kura Toi Whakaari o Aotearoa NZ		Hospice Wanganui	\$15,000
Footnote Dance Trust	\$4,000	Drama School	\$10,000	KidsCan Charitable Trust	\$7,762
Get Kids Active Charitable Trust	\$6,000	Te Wharewaka o Poneke Charitable Trust	\$15,000	Life Education Trust NZ Inc	\$4,000
GOYANZ Inc	\$30,000	Team Wellington Soccer Inc	\$30,000	Macnab Domain Community Trust Inc	\$10,000
Harbour City Gymsports Inc	\$8,000	Tennis Central Region Inc	\$25,000	Mid Central Zone of NZRL Inc	\$5,000
Hataitai School	\$15,000	Through Blue	\$2,430	Mosston School	\$1,600
Hearing Dogs for Deaf People NZ	\$5,000	Toi Maori Aotearoa - Maori Arts New Zealand		NZ Family and Fostercare Fed Inc	\$5,000
Hill Street Early Childhood Centre	\$3,000	Charitable Trust	\$5,000	NZ Golf Inc	\$10,000
Holocaust Centre of NZ	\$45,000	United Pinoy Assn of Wellington Trust		NZ Jet Sprint Assn Inc	\$3,000
Houghton Valley School	\$7,000	(Upwell Trust)	\$1,100	NZ String Quartet Trust	\$378
House of Grace Trust Inc	\$8,000	Victoria University of Wellington Cricket Club Inc	\$10,000	Netball Wanganui Inc	\$30,000
Huntingtons Disease Assn - Wellington Inc	\$5,000	Vincent's Art Workshop Inc	\$10,000	Order of St John Central Region Trust Board	\$30,000
Hutt City Community Facilities Trust	\$30,000	WMFKA - Hataitai Kindergarten	\$5,000	Parkinsonism Soc of Wanganui Inc	\$10,000
Kahurangi Friends Inc	\$4,000	WMFKA - Northland Kindergarten	\$4,797	Rapanui Bowling Club Inc	\$782
Kaibosh	\$10,000	WMFKA - Owhiro Bay Kindergarten	\$1,264	River City Boxing Club Inc	\$1,300
Khandallah Croquet Club Inc	\$650	WMFKA - Seatoun Kindergarten	\$6,000	Rock Quest Charitable Trust	\$8,825
Kids Camps NZ	\$5,000	WMFKA - Tai Tamariki Kindergarten	\$3,000	Royal NZ Plunket Soc Inc	\$16,875
Kidz Need Dadz Charitable Trust Wellington Inc	\$2,500	WMFKA - Wadestown Kindergarten	\$2,500	SANZ - St Johns Scout Group	\$1,903
Kidzstuff Theatre for Children Inc	\$5,000	WPCA - Miramar Playcentre	\$10,000	Tupoho Iwi and Community Social Service Trust	\$10,000
Kilbirnie Tennis Club Inc	\$1,500	Wadestown Community Creche Inc	\$5,000	WFKA - Aramoho Kindergarten	\$8,000
Lyllall Bay School	\$15,000	Waterside Karori AFC Inc	\$20,000	Wanganui Amateur Roller Skating Club Inc	\$2,800
Lyllall Bay Surf Life Saving Club Inc	\$35,000	Wellington Basketball Assn Inc	\$25,000	Wanganui Boys & Girls Gym Club Inc	\$6,000
Maranui Surf and Life Saving Club Inc	\$6,900	Wellington Branch of Muscular Dystrophy		Wanganui City Football Club Inc	\$1,500
Maranui Water Polo Club Inc	\$1,700	Assn of NZ Inc	\$5,000	Wanganui Community Education Services Inc	\$2,000
Marching Wellington Inc	\$1,000	Wellington Brass Band Inc	\$5,000	Wanganui Competitions Soc Inc	\$3,525
Marist A F C Inc	\$11,000	Wellington City Mission Anglican Trust	\$30,000	Wanganui Croquet Club Inc	\$3,717
Marist St Pats Rugby Football Club Inc	\$9,550	Wellington College Old Boys &		Wanganui Events Trust	\$20,000
Mary Potter Hospice Foundation Inc	\$30,000	Victoria University of Wellington RFC Inc	\$50,000	Wanganui Group of the Riding for the	
Miramar Rangers Assn Football Club Inc	\$5,683	Wellington Collegians Cricket Club Inc	\$4,780	Disabled Assn Inc	\$1,258
Multicultural Council of Wellington	\$10,683	Wellington District Brass Bands Assn Inc	\$5,000	Wanganui High School	\$4,700
Museum of NZ Te Papa Tongarewa	\$70,000	Wellington Diving Club Inc	\$8,000	Wanganui Rangitikei Clay Target Club Inc	\$10,000
NZ Book Council Inc	\$12,000	Wellington Filipino Sports Assn Inc	\$8,000	Wanganui Rowing Assn Inc	\$20,000
NZ Choral Fed Inc Wellington Region	\$4,000	Wellington Football Club Inc	\$20,000	Wanganui Rugby Football Union Inc	\$25,000
NZ Family and Fostercare Fed Inc	\$5,000	Wellington Free Ambulance Service Inc	\$100,000	Wanganui Sailing Club Inc	\$10,000
NZ Festival	\$97,718	Wellington Gilbert & Sullivan Soc Inc	\$6,000	Wanganui Sports Foundation	\$50,000
NZ Golf Inc	\$10,000	Wellington Harrier Athletic Club Inc	\$2,000	Wanganui Squash Rackets Club Inc	\$10,000
NZ Leaders Trust Board	\$10,000	Wellington Heat Basketball Inc	\$5,000	Wanganui Tech Cricket Club Inc	\$3,000
NZ Portrait Gallery Trust	\$5,000	Wellington High School and Community		Wanganui Toy Library	\$1,491
NZ School of Dance	\$6,000	Education Centre	\$2,000	Whanganui Kindergarten Assn Inc	\$38,000
NZ String Quartet Trust	\$1,097	Wellington Hockey Assn Inc	\$90,000	Whanganui Peoples Centre	\$5,000
NZ Tango Festival Charitable Trust	\$4,000	Wellington Hospitals Foundation	\$40,000	Whanganui Safe and Free Inc	\$10,000
Netball Central Zone Inc	\$14,211	Wellington Jewish Community Centre Inc	\$8,000	Youth Services Trust Wanganui	\$5,833
Netball Wellington Centre Inc	\$5,700	Wellington Mountain Bike Club Inc	\$5,000		
Newlands College	\$2,500	Wellington Municipal Croquet Club	\$5,000		
Newtown Residents Assn Inc	\$8,000	Wellington Museums Trust Inc	\$50,000		
Ngahuru Charitable Trust Board	\$10,000	Wellington Rape Crisis Inc	\$391		
Onslow Cricket Club Inc	\$8,000	Wellington Region Heritage Promotion Council Inc	\$1,906		
Orpheus Choir of Wellington Inc	\$1,500	Wellington Region Hockey Stadium Trust	\$40,000		
Parent to Parent NZ Inc - Wellington	\$6,000	Wellington Regional Asthma Soc Inc	\$5,000		
Parkinsonism Soc Wellington Inc	\$20,000	Wellington Regional Folk Foundation Inc	\$3,000		
People First NZ Inc	\$5,000	Wellington Regional Orchestra Foundation Inc	\$5,000		
Perinatal Mental Health NZ	\$2,000	Wellington Regional Sports Education Trust	\$40,000		
Poneke Football Club Inc	\$100,000	Wellington Repertory Theatre Inc	\$1,000		
Porirua Little Theatre	\$728	Wellington Rowing Club Inc	\$12,000		
Pregnancy Help Inc - Greater Wellington Branch	\$3,000	Wellington Scottish Athletics Club Inc	\$4,000		
Presbyterian Support Central Inc	\$3,500	Wellington South Parents Centre Inc	\$1,631		
Pride Awards Trust	\$2,000	Wellington Treasure Trust	\$5,000		
Primary Sport Wellington Inc	\$10,000	Wellington Veterans Tennis Club Inc	\$5,200		
Prison Chaplaincy Service of Aotearoa NZ		Wellington Volunteer Centre	\$10,000		
Charitable Trust Board	\$10,000	Wellington Volunteer Coastguard Inc	\$10,000		
Project Litefoot Trust	\$5,576	Wellington Womens Refuge Group Inc	\$8,000		
Richter City Roller Derby	\$1,600	Worser Bay Life Saving Club Inc	\$6,176		
Riding for the Disabled Assn Wellington Group Inc	\$4,995	Yachting NZ Inc	\$20,000		
Rock Quest Charitable Trust	\$14,862	Young & Hungry Arts Trust	\$3,500		
Ronald McDonald House Charities NZ Trust	\$20,000	Youthline Wellington Inc	\$6,833		
Royal NZ Ballet	\$20,000	Zeal Education Trust	\$25,000		
Royal NZ Plunket Soc Inc	\$16,875				
Royal NZ Plunket Soc Onslow Branch Inc -					
Khandallah Toy Library	\$344				
Royal Port Nicholson Yacht Club	\$15,000				
SPCA - Wellington	\$10,000				
Sexual Abuse Prevention Network	\$938				
Shakti Ethnic Womens Support Group					
(Wellington) Inc	\$3,992				
Sir Peter Blake Trust Inc	\$5,000				
Skylight Trust	\$5,000				
Special Olympics NZ - Lower North Island					

### WHANGANUI

The Lion Foundation acknowledges the outstanding contribution of the owners and staff at the following venues which generated the funds which have led to these published grants being made: **The Grand Hotel, Sportz Bar.**

Age Concern Wanganui Inc	\$5,000
Alzheimers Wanganui Inc	\$7,000
Aramoho Primary School	\$20,000
Aramoho Wanganui Rowing Club	\$9,000

### Southern

#### ASHBURTON

The Lion Foundation acknowledges the outstanding contribution of the owners and staff at the following venues which generated the funds which have led to these published grants being made: **Railway Tavern Rakaia, Tinwald Tavern, Hotel Ashburton, Devon Tavern, Hinds Tavern.**

Age Concern Ashburton Inc	\$1,896
Allenton School	\$18,271
Allenton Sports Club Inc	\$6,000
Ashburton Agricultural & Pastoral Assn	\$14,000
Ashburton Borough School	\$19,505
Ashburton Celtic Rugby Football Club Inc	\$50,000
Ashburton College	\$49,801
Ashburton Collegiate Rugby Football Club Inc	\$50,000
Ashburton Community Alcohol &	
Drug Service Inc	\$20,000
Ashburton Golf Club Inc	\$20,000
Ashburton Harness Racing Museum	
Charitable Trust	\$5,713
Ashburton Highland and National Dancing Assn	\$4,000
Ashburton Learning Centre Inc	\$23,220
Ashburton Mackenzie Community Group Inc	\$10,000
Ashburton Menz Shed Inc	\$75,000
Ashburton Multi Cultural Trust	\$12,000
Ashburton Netherby School	\$12,951
Ashburton Operatic Soc Inc	\$27,000
Ashburton Operatic Soc Inc	\$30,000
Ashburton Performing Arts Theatre Trust	\$25,000



Ashburton Petanque Club	\$2,500
Ashburton Racing Club Inc	\$6,000
Ashburton Railway & Preservation Soc Inc	\$100,000
Ashburton Range Users Assn Inc	\$50,000
Ashburton Rowing Club Inc.	\$100,000
Ashburton Savage Club Inc	\$18,000
Ashburton Senior Citizens	\$25,000
Ashburton Soc of Performing Arts Inc	\$411
Ashburton Squash Rackets Club Inc	\$25,000
Ashburton Swim Team Inc	\$25,000
Ashburton Volunteer Fire Brigade	\$30,000
Ashburton Wheels Week Committee	\$5,000
Ashburton Youth Cafe Charitable Trust	\$8,666
Basketball Mid Canterbury Inc	\$30,000
Big Little Theatre Company Inc	\$10,000
Birthingright Ashburton Inc	\$21,293
CCS Disability Action Canterbury West Coast Inc	\$20,000
CanInspire Charitable Trust	\$6,000
Coronation Target Shooting Club Inc	\$12,058
Equestrian Sport NZ - Ashburton Area Showjumping	\$8,500
Hampstead Rugby & Allsports Club Inc	\$3,500
Hampstead Rugby & Allsports Club Inc	\$5,121
Hampstead School - Ashburton	\$23,000
K2 Youth Development Trust	\$3,813
Life Education Trust - Mid & South Canterbury	\$20,062
Lions Club of Ashburton	\$3,120
Mayfield Golf Club	\$32,000
Methven United Club Inc	\$10,000
Methven Volunteer Fire Brigade	\$5,000
Mid Canterbury Childrens Theatre Inc	\$15,000
Mid Canterbury Choir Charitable Trust	\$7,813
Mid Canterbury Cricket Assn Inc	\$45,000
Mid Canterbury Football Assn Inc	\$35,000
Mid Canterbury Mountain Bike Club Inc	\$37,000
Mid Canterbury Netball Inc	\$45,000
Mid Canterbury Newcomers Network Inc	\$7,627
Mid Canterbury Playcentre Assn Inc	\$4,500
Mid Canterbury Rugby Union Inc	\$45,000
Mid Canterbury Youth Charitable Trust	\$61,681
Mid South Island Womens Refuge & Family Safety Services Inc	\$16,500
Mount Hutt College	\$2,500
NZ Deerstalkers Assn - Ashburton Branch	\$15,250
Olympia Gymnastic Sports Inc	\$5,000
Phoenix Preschool Inc	\$20,000
Presbyterian Support - Upper South Island	\$20,000
Rakaia Community Assn Inc	\$9,352
Rakaia Lions Charitable Trust	\$2,000
Rakaia Rugby Club Inc	\$4,980
Rakaia Volunteer Fire Brigade	\$20,000
Spirit of Adventure Trust	\$10,435
St Joseph's School - Ashburton	\$27,000
Tennis Mid Canterbury Sub Assn Inc	\$40,000
Tinwald Family Sport & Recreation Assn Inc	\$40,000
Waireka Croquet Club Inc	\$8,000
Water Ski Lake Hood Inc	\$2,500
Young Mens Christian Assn of South & Mid Cant. Inc	\$4,000
Zonta Club of Ashburton	\$1,005

**BULLER**

The Lion Foundation acknowledges the outstanding contribution of the owners and staff at the following venues which generated the funds which have led to these published grants being made: **Hotel Reefton.**

Buller Basketball Assn Inc	\$10,000
----------------------------	----------

Buller Budget Advisory Service Inc	\$3,000
Buller Country Music Club Inc	\$2,905
Buller Netball Centre Inc	\$5,000
Canterbury Cricket Assn Inc	\$5,000
Citizens Advice Bureau - Buller	\$2,326
Environmental Education for Resource Sustainability Trust	\$328
Homebuilders West Coast Trust	\$2,500
Inangahua Agricultural and Pastoral Sports Assn	\$736
Kawatiri Group Riding for the Disabled Inc.	\$1,500
Order of St John South Island Region Trust Board	\$10,000
Reefton Golf Club Inc	\$4,000
Westport Early Learning Centre Inc	\$7,000

**CHRISTCHURCH**

The Lion Foundation acknowledges the outstanding contribution of the owners and staff at the following venues which generated the funds which have led to these published grants being made: **Monteiths Merrin Street, Endeavour Tavern, O'Shea's Public House, Edgeware Sports Bar.**

Addington School	\$2,000
Albion Softball Club Inc	\$4,000
Aquagym Swim Club Inc	\$5,000
Aranui Community Trust Inc	\$4,000
Aranui High School	\$2,500
Art & Industry Biennial Trust	\$25,000
Asia NZ Foundation	\$5,000
Athletics Canterbury Inc - Cross Country & Road Committee	\$1,000
Avebury House Community Trust	\$1,000
Aviva (incorporating Christchurch Women's Refuge) Charitable Trust	\$15,000
Avon Hockey Club Inc	\$6,000
Avon Rowing Club Inc	\$5,000
Banks Avenue School	\$4,000
Birthingright Christchurch Inc	\$4,000
Bowls Canterbury Inc	\$4,000
Bowls NZ Inc	\$1,000
Bromley School	\$2,000
Burnside High School	\$3,000
Burnside Park Tennis Club Inc	\$3,000
Burnside Rugby Football Club Inc	\$6,000
Burnside West Christchurch University Cricket Club Inc	\$7,500
Burwood Academy Trust	\$25,000
Burwood Assn Football Club Inc	\$2,000
CPA - Avonhead Playcentre	\$1,000
CPA - Russley Playcentre	\$2,000
Cambridge Blue Inc	\$5,000
Camp Quality NZ Inc	\$1,000
Canteen - Canterbury / West Coast	\$5,000
Canterbury Alpine Ice Skating Club Inc	\$1,500
Canterbury Area Pony Club Inc	\$1,500
Canterbury Asthma Soc Inc	\$777
Canterbury Basketball Assn Inc	\$15,000
Canterbury Brass Inc	\$1,500
Canterbury Caledonian Soc Inc	\$2,000
Canterbury Community Sailing Trust	\$3,000
Canterbury Cricket Assn Inc	\$5,000
Canterbury Hockey Assn Inc	\$10,000
Canterbury Ice Hockey Assn Inc	\$1,000
Canterbury Indoor Bowls Assn Inc	\$1,000
Canterbury Judo Area Assn	\$604
Canterbury Masters Figure Skating Club Inc	\$1,000
Canterbury Minor Ice Hockey Inc	\$1,000

Canterbury Motorcycle Speedway Club Inc	\$4,000
Canterbury Provincial Amateur Fencing Council Inc	\$4,000
Canterbury Regional Basketball Foundation	\$10,000
Canterbury Rowing Assn Inc	\$3,000
Canterbury Rugby League Inc	\$15,000
Canterbury Softball Assn Inc	\$7,000
Canterbury Triathlon Club Inc	\$1,500
Canterbury United Inc	\$5,000
Canterbury West Coast Sports Trust	\$15,000
Caring for Carers Inc	\$3,000
Chamber Music NZ Trust Board	\$4,000
Chisnallwood Intermediate	\$2,000
Cholmondeley Children's Centre Inc	\$40,000
Christchurch Arts Festival Trust	\$8,000
Christchurch Boys High School	\$5,000
Christchurch Children's Christmas Parade Trust	\$5,000
Christchurch Children's Holiday Camps Trust	\$5,000
Christchurch Civic Music Council National Concerto Competition Trust	\$4,000
Christchurch Community House Te Whakaruruhau ki Otautahi Trust	\$10,000
Christchurch Early Intervention Trust Inc	\$20,000
Christchurch Football Club Inc	\$3,000
Christchurch Girls High School	\$1,500
Christchurch Girls High School Hockey Club Inc	\$4,000
Christchurch International Jazz Festival Trust	\$10,000
Christchurch Metropolitan Cricket Assn Inc	\$5,000
Christchurch Netball Centre Inc	\$5,100
Christchurch Peoples Resource Centre Inc	\$2,000
Christchurch Primary Schools Cultural Festival Trust Inc	\$5,000
Christchurch School of Gymnastics Inc	\$3,000
Christchurch School of Music Inc	\$3,000
Christchurch Singletrack Club Inc	\$2,000
Christchurch Speedway Assn Inc	\$3,000
Christchurch Symphony Trust	\$7,000
Christchurch Tap Dancing Teachers Assn Inc	\$1,500
Christchurch Transitional Architecture Trust	\$3,000
Christchurch Yacht Club Inc	\$1,000
Church Army NZ - Canterbury Kids Coach	\$594
City of Christchurch International Marathon Trust Board	\$5,000
Clown Doctors NZ Charitable Trust	\$8,000
Coastal Spirit Football Club Inc	\$15,000
Coastguard Southern Region Inc	\$3,000
Community Development Network Trust	\$5,000
Condor Rugby Football Club Inc	\$1,500
Disabled Persons Centre Trust	\$3,000
Domain Concerts Trust Board	\$5,000
Dunedin Council of Social Services Inc	\$5,000
E S NZ Eventing Canterbury Inc	\$874
Early Childhood Resource Centre Chch Inc	\$10,000
East Christchurch Shirley Cricket Club Inc	\$15,000
Edgeware Tennis Club Inc	\$2,000
English Language Partners Christchurch Inc	\$1,500
Equestrian Sports NZ Inc	\$10,000
Garden City Tappers & Performing Arts Assn Inc	\$2,000
Harewood Golf Club Inc	\$8,000
Hearing Dogs for Deaf People NZ	\$1,000
Heart Kids Canterbury	\$4,000
Heart Kids NZ Inc	\$4,000
Highland Piping Soc of Canterbury Inc	\$1,000
Hohepa Services Ltd - Canterbury	\$1,865
Home & Family Soc Christchurch Inc	\$15,000
Imagine Charitable Trust	\$1,000
Indian Social & Cultural Club (Chch) Inc	\$7,000

We may be able to help your club, charity or community group too.

To apply for a grant, just complete our simple form available at:

[lionfoundation.org.nz](http://lionfoundation.org.nz)

or at your local Lion Foundation venue.







GRANT N° 9014682

Dunedin BMX Club

# Dunedin club rides to success on surging popularity

Sarah Walker's international success on the BMX circuit, which includes a World Cup title and a Silver Olympic medal, has helped fuel huge interest in the sport. Boys and girls of all ages spend weekends charging around purpose-built tracks throughout the country, and one of Otago's most popular has to be Dunedin's BMX Club. The club prides itself on providing family fun, friendship and fitness for kids of all ages. When the track needed essential upgrades, the Lion Foundation wasted no time in riding to the rescue.



International Taekwon-Do Riccarton Inc	\$2,000	Shirley Primary School	\$4,000	Anglican Family Care Centre Inc.	\$20,000
Japan Karate-Do Fed Goju Kai NZ Assn Inc	\$3,000	Sigjaws Charitable Trust	\$502	Ariki (Dunedin) Amateur Athletic & Harrier Club Inc	\$2,500
Jellie Park Aqualand Sports Institute Inc	\$5,000	Skellerup Royal Guards Under 16 Marching Team	\$1,500	Athletics Otago Inc	\$25,000
Kingslea School - Te Oranga	\$2,000	Skellerup Royal Kilties Under 12 Marching Team	\$1,500	Basketball Otago Inc	\$40,000
Lancaster Park Cricket Club Inc	\$2,500	Social Service Council of the		Bayfield High School	\$5,000
Life Education Trust - Canterbury	\$17,631	Diocese of Christchurch	\$6,000	Blue Oyster Arts Trust	\$2,595
Life Education Trust NZ Inc	\$5,000	South Brighton Surf Life Saving Club Inc	\$6,000	Board of the Dunedin Writers and Readers Festival	\$5,000
Linfield Cultural Recreational & Sports Club Inc	\$15,000	South Island Rowing Inc	\$2,000	Bowls NZ Inc	\$2,000
Linwood Rugby Club Inc	\$5,000	Southern Astros Baseball Club Inc	\$2,100	Brockville School	\$6,000
Living Springs Trust	\$25,000	Southern Zone Deaf Rugby Union Inc	\$2,000	Burwood Academy Trust	\$5,000
Mainland Football Inc	\$10,000	Span Charitable Trust	\$3,000	CCS Disability Action Otago Inc	\$7,000
Mainland Ice Racing Club Inc	\$3,000	SPELD NZ Inc	\$4,000	Camp Quality NZ Inc	\$1,000
Mairehau High School	\$2,000	St Josephs Catholic School - Papanui	\$2,000	Camp Quality South	\$3,000
Mairehau Primary School	\$2,000	St Teresas School	\$2,000	Canteen - Otago Branch	\$8,000
Male Survivors of Sexual Abuse Trust	\$4,000	Stopping Violence Services (Christchurch) Inc	\$5,000	Carers Soc (Otago) Inc	\$3,124
Marian College	\$2,500	Surf Life Saving NZ Inc - Southern Region	\$10,000	Caversham Assn Football Club	\$5,000
Marist Albion Netball Club Inc	\$2,000	Swimming Canterbury West Coast	\$4,000	Caversham Toy Library Inc	\$1,800
Mental Health Advocacy & Peer Support Trust	\$5,000	Sydenham Cricket Club Inc	\$3,000	Chamber Music NZ Trust Board	\$5,000
Merivale - Papanui Cricket Club Inc	\$2,500	Tamariki School	\$1,000	Citizens Advice Bureau - Dunedin	\$3,000
Metro Youth Trust	\$1,500	Taylor's Mistake Surf Lifesaving Club Inc	\$10,000	City Highlanders Hockey Club Inc	\$5,000
Multiple Sclerosis & Parkinsons Soc of		Tenants Protection Assn - Christchurch Inc	\$2,500	Coastguard Southern Region Inc	\$3,000
Canterbury Inc	\$7,000	Tennis Canterbury Region Inc	\$5,000	College Street Gymnastics Club 2012 Inc	\$4,000
NZ Golf Inc	\$3,750	The Southern Ballet Trust	\$3,000	Concord School	\$5,000
NZ Paramedic Education &		Top Dog Theatre Inc	\$2,000	Condor Rugby Football Club Inc	\$3,250
Research Charitable Trust	\$3,000	Touch Canterbury Inc	\$8,000	Cycling Otago Inc	\$10,000
NZ Riding Pony Soc Inc	\$2,000	Treasure Trove Trust	\$2,000	DKA - Bayfield Kindergarten	\$7,500
NZ Spinal Trust	\$5,000	University of Canterbury Hockey Club Inc	\$2,000	DKA - Jonathan Rhodes Kindergarten	\$1,239
National Heart Foundation of NZ	\$5,000	University of Canterbury Rugby Football Club Inc	\$2,000	DKA - Mosgiel Central Kindergarten	\$1,000
National Male Choir of NZ Inc	\$2,250	Villa Maria College	\$1,500	DKA - Roslyn Kindergarten	\$6,790
Netball Mainland Inc	\$5,000	Waitikiri Golf Club Inc	\$2,000	Disability Information Service Inc	\$5,000
Nomads United A F C Inc	\$2,000	Wharenui Amateur Swimming Club Inc	\$2,000	Dunedin BMX Club Inc	\$15,000
Olympia Gymnastic Sports Inc	\$30,000	Wharenui Gators Inc	\$2,000	Dunedin Choral Soc	\$5,000
Oscar In St Albans Inc	\$2,500	Wharenui School	\$2,000	Dunedin City Council	\$5,000
Papanui High School	\$4,000	Womens Centre Inc	\$2,000	Dunedin Civic Orchestra Inc	\$12,000
Papanui Youth Development Trust	\$4,000	Woolston Brass Inc	\$5,000	Dunedin Community Care Trust	\$3,500
Parafed Canterbury Inc	\$6,000	Word Christchurch	\$5,000	Dunedin Cricket Assn Inc	\$10,000
Parent to Parent NZ Inc - Greater		World Buskers Festival Trust	\$5,000	Dunedin Fringe Arts Trust	\$5,000
Canterbury Region	\$2,000	Yachting NZ Inc	\$5,000	Dunedin Group Riding for the Disabled Assn Inc	\$6,400
Parklands United Sports Club Inc	\$4,000	Young Mens Christian Assn of Christchurch Inc	\$5,000	Dunedin Gymnastic Academy Inc	\$50,000
People First NZ Inc - Mid South Region	\$1,500	Youth Alive Trust	\$10,000	Dunedin Ice Hockey Assn Inc	\$6,000
Pioneers of Canterbury U16 Marching	\$1,000			Dunedin Lawn Bowls Stadium Inc	\$4,000
Project Esther Trust Inc	\$2,000			Dunedin Midwinter Celebrations	\$3,795
Project Lyttelton Inc	\$1,500			Dunedin Opera Company Inc	\$6,000
QEII Swim Club Inc	\$1,500			Dunedin Performing Arts Competitions Society Inc	\$1,248
RATEC Motorsport inc	\$1,000			Dunedin Poultry Pigeon & Cage Bird Club Inc	\$1,111
Rangi Ruru Girls School	\$3,000			Dunedin Prison Charitable Trust	\$5,000
Riding for the Disabled Assn Inc Christchurch	\$5,000			Dunedin Rugby Football Club Inc	\$35,000
Ronald McDonald House South Island	\$5,000			Dunedin Triathlon & Multisports Club Inc	\$5,000
Rowley Avenue School	\$2,000			Dunedin Underwater Hockey Club Inc	\$924
Royal NZ Plunket Soc Inc	\$20,000			Dunedin Youth Orchestra Inc	\$4,000
S A NZ - Avonhead-Russley Scout Group	\$2,000			East Taieri Pre-School	\$1,920
School Sport Canterbury Inc	\$15,000			East Taieri School	\$2,000
Scottish Soc of NZ Pipe Band Inc	\$2,500			Elmgrove School	\$5,000
Seabrook McKenzie Trust for Specific				FoodShare Ltd	\$6,000
Learning Disabilities	\$15,000			Green Island Combined Sports Bodies Inc	\$10,000
Shakti Ethnic Womens Support Group				Green Island Cricket Club Inc	\$1,500
Christchurch Inc	\$2,000			Green Street Early Learning Centre	\$15,000
Shirley Boys High School	\$3,000			Hawksbury Lagoon Inc	\$471
Shirley Intermediate School	\$10,000			Hearing Dogs for Deaf People NZ	\$1,000

## DUNEDIN

The Lion Foundation acknowledges the outstanding contribution of the owners and staff at the following venues which generated the funds which have led to these published grants being made: **Mornington Tavern, Ocean Beach Hotel, Law Courts Hotel, The Baaa Sports Bar & Cafe, Mitchells Tavern, Mosgiel Tavern.**

Abbotsford Primary School	\$2,500
Acts of Kindness Charitable Trust	\$4,000
Albion Cricket Club Inc	\$4,000
Alhambra Union Rugby Football Club Inc	\$15,000
Alzheimers Disease & Related Disorders	
Soc Otago Inc	\$3,000
Amputee Soc of Otago & Southland Inc	\$3,000
Andersons Bay Basketball Club Inc	\$2,000
Andersons Bay Community Kindergarten	\$10,000

Heart Kids NZ Inc	\$4,000	Otago Secondary School Sports Assn Inc	\$5,000	Wingatui Community Hall Soc Inc	\$4,500
ITFNZ - Taekwon-do South Island Inc	\$2,000	Otago Secondary Schools Rugby Council	\$50,000	Work Opportunities Trust Inc	\$5,500
ID Dunedin Fashion Inc	\$5,000	Otago Sports Car Club (Inc)	\$10,000	YWCA - Dunedin Inc	\$3,500
International Festival of Environment, Science & Technology, Dunedin NZ Inc	\$5,000	Otago Table Tennis Assn Inc	\$4,000	Yachting NZ Inc	\$5,000
Island Park Golf Club Inc	\$12,500	Otago Touch Assn Inc	\$10,000	Youthline Otago Inc	\$9,000
John McGlashan College	\$5,000	Otago University Hockey Club	\$920	Zingari Richmond Football Club Inc	\$25,000
Kaikorai Presbyterian Church	\$2,000	Otago University Rowing Club Inc	\$8,000		
Kaikorai Rugby Football Club Inc	\$10,000	Otago Women's Evergreen Softball Inc	\$2,136		
Kaikorai Valley College	\$4,106	Otakou Health Ltd	\$50,000		
Kartsport Dunedin Inc	\$8,000	OUSA Kayak Racing Club Inc	\$1,500		
Kavanagh College	\$15,000	Outram Charitable Trust Board	\$5,000		
Kingslea School - Puketai	\$4,000	Pacific Trust Otago	\$3,000		
Life Education Trust Coastal Otago	\$5,000	Parafed Otago Inc	\$10,000		
Life Education Trust NZ Inc	\$5,000	Petanque Taieri Inc	\$2,000		
Little Box of Operas Inc	\$2,900	Piping & Dancing Assn of NZ Inc Otago Centre	\$1,231		
Mornington Bowling Club Inc	\$2,700	Poems in the Waiting Room (NZ)	\$1,000		
Mornington Roslyn Lawn Tennis Club Inc	\$5,682	Pregnancy Counselling Services Inc - Dunedin	\$1,147		
Mornington School	\$5,000	Pregnancy Help Inc - Dunedin	\$3,000		
Mosgiel Assn Football Club Inc	\$5,000	Project Litefoot Trust	\$16,505		
NZ Academy of Highland & National Dancing Inc	\$2,000	Royal Dunedin Male Choir Inc	\$843		
NZ Fed of Young Farmers Clubs Inc	\$2,500	Royal NZ Plunket Soc Inc	\$30,000		
NZ Golf Inc	\$5,000	SANZ - Macandrew Bay Scout Group	\$5,000		
NZ Hockey Fed Inc	\$10,000	SANZ - Pitcairn Scout Group	\$2,000		
NZ Paramedic Education & Research Charitable Trust	\$2,000	SANZ - St Patricks Scout Group - Dunedin	\$4,000		
NZ Spinal Trust	\$5,000	Sacred Heart School - Dunedin	\$2,000		
National Heart Foundation of NZ	\$7,000	Saturday Morning Music Classes Dunedin Soc Inc	\$5,000		
Nelson Yacht Club Inc	\$12,000	Sawyers Bay School	\$2,000		
Netball South Zone Inc	\$5,000	South Island Rowing Inc	\$3,000		
No 7 District Fed of NZ Soccer Inc	\$45,000	Southern Ice Hockey League	\$2,640		
North East Valley Cricket Club Inc	\$3,000	Southern United FC Inc	\$45,000		
North East Valley Normal School	\$2,463	Southern Youth Choir Trust	\$389		
North End Rowing Club Inc	\$25,000	SoutherNZone Rugby League Inc	\$15,000		
Northern Assn Football Club Inc	\$5,000	Southland Otago Axemens Centre	\$2,000		
Onyx Militaires Marching Team	\$1,500	SPELD NZ Inc	\$4,000		
Opoho Primary School	\$2,000	Sport Otago	\$17,500		
Order of St John South Island Region Trust Board	\$40,000	Squash Otago Inc	\$2,000		
Orokonui Ecosanctuary Ltd	\$5,000	St Brigids School	\$7,000		
Otago Area ESNZ Showjumping	\$3,000	St Clair Golf Club Inc	\$16,000		
Otago Badminton Assn Inc	\$10,000	St Clair Surf Life Saving Club Inc	\$6,000		
Otago Boxing Assn Inc	\$2,000	St Francis Xavier School	\$5,000		
Otago Branch of the RNZ SPCA Inc	\$40,000	St Hildas Collegiate School	\$8,000		
Otago Chamber of Commerce	\$10,000	St Peter Chanel School - Dunedin	\$3,000		
Otago Community Hospice Trust	\$40,000	Storylines Childrens Literature Charitable Trust of NZ	\$2,500		
Otago Cricket Assn Inc	\$35,000	Straight Up Trust	\$417		
Otago Early Childhood & Schools Maori & Pacific Island Trust	\$15,000	Strath Taieri School	\$500		
Otago Festival of the Arts Trust	\$12,000	Surf Life Saving NZ Inc - Southern Region	\$5,000		
Otago Girls High School	\$3,800	Taieri Bowling Club Inc	\$20,000		
Otago Indoor Bowls Assn Inc	\$3,500	Taieri College	\$3,000		
Otago Medical Research Foundation	\$7,500	Taieri Dramatic Soc Inc	\$9,000		
Otago Model Engineering Soc Inc	\$1,890	Taieri Golf Club Inc	\$8,000		
Otago Museum Trust Board	\$100,000	Taieri Junior Cricket Club	\$833		
Otago Peninsula Biodiversity Trust	\$5,000	Taieri Musical Soc Inc	\$9,000		
Otago Pioneer Women's Memorial Assn Inc	\$3,000	Taieri Rugby Football Club Inc	\$25,000		
Otago Presbyterian Girls College - Columba College	\$5,000	Tainui Sports Soc Inc	\$1,695		
Otago Rowing Assn Inc	\$2,000	Tennis Otago Inc	\$9,000		
Otago Rugby Football Union Inc	\$90,000	The Brain Injury Assn (Otago) Inc	\$15,000		
Otago Rugby League Inc	\$20,000	University of Otago Physical Education Netball Club Inc	\$4,675		
Otago Rugby Referees Assn Inc	\$10,000	Waikouaiti Trotting Club Inc	\$5,000		
		Western District Country & Variety Music Club Inc	\$1,000		

**GREY**

The Lion Foundation acknowledges the outstanding contribution of the owners and staff at the following venues which generated the funds which have led to these published grants being made: **Union Hotel.**

Bowls West Coast Inc	\$5,000
Burwood Academy Trust	\$3,000
Canterbury Cricket Assn Inc	\$5,000
Canterbury West Coast Sports Trust	\$5,000
Cobden Bowling Club Inc	\$3,000
Cobden Kohinoor Rugby League Club Inc	\$1,750
Diocese of Nelson - Greymouth & Kumara Anglican Parish	\$8,000
Dobson Reserve Board	\$10,000
Grey District Waitangi Day Community Celebration	\$2,427
Grey United Tennis Club	\$2,224
Greymouth Amateur Swimming Club	\$10,000
Greymouth Clay Target Club Inc	\$4,000
Greymouth Golf Club Inc	\$1,646
Greymouth Marist Rugby Football Club	\$2,979
Greymouth Motorcycle Street Race Inc	\$8,000
Greymouth Municipal Band Inc	\$8,300
Greymouth Squash Rackets Club Inc	\$1,600
Greymouth Suburbs Rugby League Football Club Inc	\$2,254
Homebuilders West Coast Trust	\$2,437
John Paul II High School	\$6,000
Kaiata Community Centre Inc	\$3,000
Karoro School	\$10,000
Kotuku Surf Life Saving Club	\$30,000
Life Education Trust NZ Inc	\$1,000
MS West Coast Inc	\$7,000
Mainland Football Inc	\$2,000
NZ Golf Inc	\$5,000
NZ Spinal Trust	\$2,500
Order of St John South Island Region Trust Board	\$10,000
Parafed Canterbury Inc	\$1,000
Royal NZ Plunket Soc Inc	\$5,000
SPCA - Greymouth	\$3,000
SoutherNZone Rugby League Inc	\$2,500
Star United Netball Club	\$6,000
West Coast Basketball Assn Inc	\$5,000
West Coast Cricket Assn Inc	\$5,000
West Coast Gem & Mineral Club Inc	\$1,059
West Coast Hockey Assn Inc	\$2,500
West Coast Rugby Football Union Inc	\$4,000

**GRANT N° 9014333**

Kotuku Surf Life Saving Club

# The surf's up but the roof's coming down

The South Island's rugged and bracing West Coast isn't the first place that springs to mind when you think of fun in the sea, but there are hardy folk down there as the volunteers at Greymouth's Kotuku Surf Life Saving Club can tell you. Unfortunately, while the swimmers and surfers are happy to face the elements, it was a different story for the battered roof on the surf club; it was in a sorry state and badly needed replacing, which has now been done thanks to a Lion Foundation grant.







**GRANT N° 9015209**

**Richmond Riding for the Disabled**

# Richmond sees the benefits of pony power

**R**ichmond Riding for the Disabled is a not-for-profit organisation that provides opportunities for anyone with a disability to enjoy safe, stimulating and therapeutic horse riding. They have twelve horses and around thirty volunteers to fulfil a busy schedule, which includes riding and 'equine-facilitated' psychotherapy. The benefits of animal contact and companionship are well documented and, the proof of the demand for these encounters can be, seen in the 80,000 rides facilitated by New Zealand's Riding for the Disabled Association. With no government support for this worthy cause Lion Foundation recognised a vital need to step in and help.



## HURUNUI

Life Education Trust - Canterbury \$638

## INVERCARGILL

The Lion Foundation acknowledges the outstanding contribution of the owners and staff at the following venues which generated the funds which have led to these published grants being made: **Eagle Hotel.**

Bluff Oyster & Food Festival Charitable Trust \$7,500  
Bluff Yacht Club \$5,000  
Conductive Education (Southern) Charitable Trust \$2,000  
Head Injury Soc of Southland Inc \$1,500  
NZ String Quartet Trust \$530  
Southland Youth One Stop Shop Trust \$2,000  
Youth Development Southland Region Trust \$5,000

## KAIKOURA

Kaikoura Community Gym Inc \$2,080

## MARLBOROUGH

The Lion Foundation acknowledges the outstanding contribution of the owners and staff at the following venues which generated the funds which have led to these published grants being made: **The Crow Tavern, Woodbourne Tavern, The Good Home Blenheim, Fairweather On Scott.**

Awatere Early Learning Centre Inc \$2,000  
Awatere Golf Club Inc \$5,000  
Blenheim Bowling Club Inc \$2,277  
Blenheim Choral Soc Inc \$2,000  
Blenheim Country Music Club Inc \$3,000  
Blenheim Rowing Club Inc \$10,000  
Blenheim Swimming Club Inc \$7,500  
Bowls NZ Inc \$1,000  
Burwood Academy Trust \$5,000  
Canterbury Golf Inc \$8,000  
Central Districts Cricket Assn Inc \$10,000  
Eagles Golfing Soc of Nelson/Marlborough Inc \$4,000  
Eastern States Speedway (1995) Inc \$8,000  
Fairhall School \$10,000  
Friends of Renwick Museum & Watson Memorial Library Soc Inc \$2,500  
Garden Marlborough 2004 Inc \$900  
Golf Marlborough \$3,000  
Hearing Dogs for Deaf People NZ \$1,000  
Heart Kids NZ Inc \$2,000  
Hockey Marlborough Inc \$4,460  
ITFNZ - Taekwon-do South Island Inc \$2,000  
Life Education Trust NZ Inc \$718  
Marching Marlborough Assn Inc \$8,000  
Marlborough Art Society Inc \$5,000  
Marlborough Basketball Assn Inc \$5,000

Marlborough Boys College Rugby Club Inc \$11,295  
Marlborough Branch of the RNZSPCA \$20,000  
Marlborough Civic Theatre Trust \$40,000  
Marlborough Colleges Sailing Club \$3,000  
Marlborough Community Development Trust \$461  
Marlborough Football Inc \$4,000  
Marlborough Girls College \$4,000  
Marlborough Golf Club Inc \$7,500  
Marlborough Group NZ Riding for the Disabled Assn Inc \$6,000  
Marlborough Netball Centre Inc \$7,000  
Marlborough Racing Club Inc \$1,500  
Marlborough Softball Assn Inc \$2,000  
Marlborough Squash Rackets Club Inc \$3,833  
NZ Golf Inc \$5,000  
NZ Spinal Trust \$5,000  
Nelson Marlborough Rescue Helicopter Trust Inc \$15,000  
Nelson Marlborough West Coast Brass Band Assn Inc \$3,600  
Netball Mainland Inc \$3,000  
Order of St John South Island Region Trust Board \$20,000  
Outward Bound Trust of NZ Inc \$6,000  
People First NZ Inc - Mid South Region \$1,000  
Picton Golf Club Inc \$5,000  
Picton Little Theatre Inc \$4,000  
Picton Maritime Festival Trust \$5,000  
Project Litefoot Trust \$2,000  
Queen Charlotte Yacht Club \$1,940  
Renwick Bowling Club Inc \$3,000  
Renwick Cricket Club Inc \$7,500  
Renwick Rugby Football Club Inc \$15,000  
Renwick School \$5,000  
Rock Quest Charitable Trust \$1,305  
Royal NZ Plunket Soc Inc \$15,000  
SANZ - Churchward Park Scout Group \$2,800  
South Island Rowing Inc \$1,000  
South Island Secondary Schools Netball Assn Inc \$3,000  
Southern Zone Rugby League Inc \$2,500  
Surf Life Saving NZ Inc - Southern Region \$5,000  
Tasman Regional Sports Trust \$15,000  
Tasman Rugby Union Inc \$45,000  
Tennis Canterbury Region Inc \$1,500  
United Basketball Club Inc \$1,940  
Waikawa Boating Club Inc \$12,000  
Wairau Cricket Club \$4,000  
Waitohi Rugby Football Club Inc \$2,000  
Whitney Street School \$3,090  
Witherlea School \$5,000  
Yachting NZ Inc \$5,000

## NELSON

The Lion Foundation acknowledges the outstanding contribution of the owners and staff at the following venues which generated the funds which have led to these published grants being made: **The New Street Steakhouse, 623 In The City, Wakatu Hotel.**

Adult Learning Support Nelson Inc \$10,000  
Age Concern Nelson Inc \$3,000  
Alzheimers Soc Nelson Inc \$2,300  
Annesbrook Community Trust \$3,000  
Big Brothers Big Sisters of Nelson \$5,000  
Bowls NZ Inc \$1,000  
Bowls Nelson Inc \$8,000  
CCS Disability Action Nelson Marlborough Inc \$15,000  
Canterbury Golf Inc \$8,000  
Central Districts Cricket Assn Inc \$5,000  
Chamber Music NZ Trust Board \$4,000  
Clifton Terrace School \$4,000  
Club 24 Inc \$3,000  
Condor Rugby Football Club Inc \$1,500  
FC Nelson Inc \$10,000  
Friends of Old Fairfield Inc \$5,000  
Hearing Assn Inc - Nelson Inc \$4,000  
Hearing Dogs for Deaf People NZ \$1,000  
Heart Kids NZ Inc \$2,000  
ITFNZ - Taekwon-do South Island Inc \$2,000  
Life Education Trust NZ Inc \$2,000  
Life Line Nelson Inc \$2,500  
NZ Family and Fostercare Fed Inc \$4,000  
NZ Golf Inc \$5,000  
NZ Spinal Trust \$5,000  
National Heart Foundation of NZ \$3,000  
Nayland College \$2,500  
Nelson Badminton Assn Inc \$4,000  
Nelson Bays Football Inc \$25,000  
Nelson Bays Tennis Assn \$2,000  
Nelson City Brass Inc \$9,000  
Nelson City Council \$7,000  
Nelson Civic Choir Inc \$1,000  
Nelson Cricket Assn Inc \$15,000  
Nelson Hockey Assn Inc \$5,000  
Nelson Jazz Club Inc \$2,625  
Nelson Lawn Tennis Club Inc \$900  
Nelson Marlborough Rescue Helicopter Trust Inc \$15,000  
Nelson Multicultural Council Inc \$3,900  
Nelson Music Festival Trust \$5,000  
Nelson Netball Centre Inc \$10,000  
Nelson Rowing Club Inc \$10,000  
Nelson Rugby Football Club Inc \$20,000  
Nelson Samba Collective Charitable Trust \$5,000  
Nelson Santa Parade Trust Inc \$2,000  
Nelson Tasman Region Hospice Trust \$20,000  
Nelson Triathlon & Multisport Club Inc \$3,000  
Nelson Womens Refuge Inc \$6,240  
Nelson Womens Support Inc \$2,900  
Netball Mainland Inc \$3,000  
Order of St John South Island Region Trust Board \$10,000  
Post Natal Depression Support Network Nelson Inc \$2,500  
Project Litefoot Trust \$1,495  
Richmond Group Riding for the Disabled Inc \$10,000  
Royal NZ Plunket Soc Inc \$15,000  
Rutherford Street Kindergarten Inc \$5,000  
SVS - Living Safe \$6,000  
Sexual Abuse, Support & Healing (SASH) Nelson Inc \$5,000

# Meet some of our operators

## MARGARET & FRANCIS MONOPOLI

New Street Steakhouse (Nelson)

Margaret and Francis have been involved in the Nelson hospitality scene for over 20 years and have had a relationship with The Lion Foundation from their Wakatu Hotel days through to their latest venture the New Street Steakhouse. Proud Nelson locals, Margaret and Francis get to see the benefits of community funding every day and especially love seeing funding staying within the Nelson area, where it's generated.



North Otago Cricket Assn Inc	\$15,000
North Otago Justices of the Peace Assn Inc	\$667
North Otago Netball Centre Inc	\$3,538
North Otago Recreational Turf Trust	\$15,000
North Otago Rugby Football Union Inc	\$25,000
North Otago Rugby Referees Assn Inc	\$2,000
North Otago Toy Library Inc	\$6,336
North Otago Yacht and Power Boat Club Inc	\$2,000
Oamaru Intermediate School	\$2,322
Oamaru Old Boys RFC Inc	\$1,000
Oamaru Performing Arts Soc Inc	\$5,000
Oamaru Steam & Rail Restoration Soc Inc	\$1,043
Oamaru Victorian Heritage Celebrations Inc	\$7,500
Oamaru Whitestone Civic Trust	\$25,000
SANZ - North Otago Scouts	\$5,000
Special Olympics Lower South Island Regional Council	\$5,000
Special Olympics North Otago	\$5,000
Sport Otago	\$13,250
Sport Otago	\$20,000
St Kevins College	\$1,500
Union Cricket Club (Oamaru) Inc	\$2,500
Waitaki Boys High School	\$3,000
Waitaki Community Recreation Centre	\$6,000
Waitaki District Community House Trust	\$5,000
Waitaki Safer Community Trust	\$415
Waitaki Tourism Assn	\$3,000

## QUEENSTOWN LAKES

The Lion Foundation acknowledges the outstanding contribution of the owners and staff at the following venues which generated the funds which have led to these published grants being made: **Wanaka Bullock Bar, Fitzpatrick's Irish Pub.**

Alpine Community Development Trust	\$3,000
Arrowtown Autumn Festival Soc Inc	\$3,040
Aspiring Beginnings Early Learning Centre Inc	\$10,000
Aspiring Gymsports Inc	\$25,000
Burwood Academy Trust	\$5,000
Canlive Charitable Trust	\$10,000
Challenge Wanaka Sports Trust	\$10,000
Coastguard Southern Region Inc	\$3,000
Cycling Southland Inc	\$10,000
Disc Golf Wanaka Inc	\$2,000
Happiness House Trust	\$2,500
Hearing Dogs for Deaf People NZ	\$1,000
Heart Kids NZ Inc	\$2,000
Holy Family Catholic School Wanaka	\$10,000
Kahu Youth Trust	\$8,000
Life Education Trust Heartland Otago/Southland	\$3,000
Life Education Trust NZ Inc	\$750
Luggate Albion Cricket Club Inc	\$3,000
Mt Aspiring College	\$20,000
NZ Golf Inc	\$5,000
NZ Mountain Film Festival Charitable Trust	\$5,000
Netball Upper Clutha Inc	\$6,000
Order of St John South Island Region Trust Board	\$20,000
Otago Country Cricket Assn Inc	\$1,730
Pioneer Netball Club Inc	\$880

Soccer Nelson Inc	\$5,000
South Island Rowing Inc	\$2,000
South Island Secondary Schools Netball Assn Inc	\$4,000
Sport Fishing for Youth Charitable Trust	\$3,500
Supporting Families in Mental Illness Nelson Branch Inc	\$2,000
Surf Life Saving NZ Inc - Southern Region	\$5,000
Tahunanui Community Centre Inc	\$4,000
Tasman Bay Cruising Club	\$2,493
Tasman Regional Sports Trust	\$20,000
Tasman Rugby League Inc	\$10,000
Tasman Rugby Union Inc	\$40,000
Te Herenga Tahu Inc	\$2,500
Tennis Canterbury Region Inc	\$1,500
United Bowling Club Inc	\$6,000
Victory Boxing Charitable Trust	\$10,000
Victory Community Health Centre Inc	\$4,000
Victory School	\$5,000
Volunteer Nelson Inc	\$5,000
Wairua Warriors OCR Club	\$6,000
Wakatu Cricket Club Inc	\$10,000
Wanderers Rugby Football Club Inc	\$2,000
Yachting NZ Inc	\$5,000

## OAMARU

The Lion Foundation acknowledges the outstanding contribution of the owners and staff at the following venues which generated the funds which have led to these published grants being made: **Sports Central Brewhouse, Northstar Motels Restaurant and Bar.**

Alzheimers Disease & Related Disorders Soc Otago Inc - North Otago	\$2,500
Anglican Parish of Oamaru - Maheno	\$1,000
Awamoa Soccer Club Inc	\$1,000
Blue Light Ventures Inc - Oamaru	\$1,413
Central Coast Country Music Assn Inc	\$2,400
Citizens Advice Bureau Inc - North Otago	\$2,288
Environmental Education for Resource Sustainability Trust	\$1,161
Harbour Street Jazz Inc	\$2,000
Janet Frame Eden Street Trust	\$6,000
Literacy North Otago Inc	\$5,000
Meadowbank Bowling Club Inc	\$1,000
Musical Theatre Oamaru Inc	\$2,289
North Otago Asthma Soc Inc	\$570
North Otago Cricket Assn Inc	\$15,000

## GRANT N° 9013359

New Zealand Football

# Five-a-side Futsal for future All Whites

You may not have heard of Futsal, but you're going to. It's the world's fastest growing indoor sport with millions of players and over 6,700 dedicated participants in New Zealand. Futsal is a version of five-a-side football – originally invented in Uruguay – that uses a smaller ball than conventional soccer and a much tighter playing ground. The emphasis is on improvisation, creativity and technique, and it's not surprising that South American soccer greats have honed their skills in Futsal. We're looking forward to a future crop of All Whites, and their dazzling skills.





Queenstown Lakes District Council	\$4,000
Royal NZ Plunket Soc Inc	\$12,500
Snow Sports NZ Inc	\$15,000
South Island Rowing Inc	\$2,000
Southern Lakes Arts Festival Trust	\$7,500
SPELD NZ Inc	\$2,000
Sport Otago	\$2,500
Upper Clutha Hockey Club Inc	\$7,000
Wanaka Community Toy Library	\$5,000
Wanaka Croquet Club Inc	\$10,000
Wanaka Golf Club Inc	\$10,000
Wanaka New Life Church Board	\$40,000
Wanaka Primary School	\$45,000
Wanaka Rodeo Club Inc	\$20,000
Wanaka Rowing Club Inc	\$8,000
Wanaka Search & Rescue Inc	\$2,782
Wanaka Squash Rackets Club Inc	\$3,000
Wanaka Yacht Club	\$10,000
Warbirds over Wanaka Charitable Trust	\$8,000
Winter Games NZ Trust	\$25,500

**SOUTHLAND**

The Lion Foundation acknowledges the outstanding contribution of the owners and staff at the following venues which generated the funds which have led to these published grants being made: **Central Southland Lodge.**

Borland Lodge Adventure & Education Trust	\$5,000
Central Southland College	\$4,000
Central Southland Vintage Machinery Club Inc	\$3,000
Environmental Education for Resource Sustainability Trust	\$1,907
Eventing Southland	\$5,000
Lions Club of Winton Inc	\$5,000
Parent to Parent NZ Inc - Southland	\$2,000
Royal NZ Plunket Soc Inc	\$2,500
Southern Reap Inc	\$469
St Thomas Aquinas School	\$5,000
Winton A&P Assn	\$3,000
Winton Community Board	\$8,000
Winton Cricket Club	\$1,062
Winton Football Club Inc	\$2,900
Winton Harriers & Athletics Club Inc	\$5,000
Winton Netball Club	\$3,346
Winton RSA & Citizens Bowling Club Inc	\$2,000
Winton Skate Park Trust	\$30,000

**TASMAN**

The Lion Foundation acknowledges the outstanding contribution of the owners and staff at the following venues which generated the funds which have led to these published grants being made: **Telegraph Hotel, Motueka Hotel.**

Abel Tasman Educational Trust	\$5,000
Canterbury Golf Inc	\$4,000
Central Districts Cricket Assn Inc	\$5,000
Central Districts Judo Assn Inc	\$5,000
Golden Bay Assn Football Club	\$10,000
Golden Bay Community Workers Inc	\$827
Golden Bay High School	\$7,000
Golden Bay Shared Recreation Facility Inc	\$10,000
Golden Bay Tennis Club Inc	\$4,000
Golden Bay Work Centre Trust	\$2,331
Good Sports Motueka Inc	\$4,000
Life Education Trust NZ Inc	\$2,000
Lower Moutere School	\$3,000
Mapua Community Library	\$2,000
Motueka & Districts Amateur Swimming Club Inc	\$1,500
Motueka Bowling Club Inc	\$2,000
Motueka Cricket Club Inc	\$8,000
Motueka Group Riding for the Disabled Assn Inc	\$10,000
Motueka Judo Club Inc	\$4,000
Motueka South School	\$3,500
Motueka Squash Rackets Club Inc	\$5,000
Motueka Touch Inc	\$2,000
Motupipi Public Hall Inc	\$2,000
NPA - Brightwater Playcentre	\$913
NZ Fed of Young Farmers Clubs Inc	\$2,500
Nelson Asthma Soc Inc	\$1,091
Nelson Bays Harmony Chorus	\$3,000
Nelson Cat Club Inc	\$1,000
Nelson District Kennel Assn	\$1,500
Nelson Fringe Arts Charitable Trust	\$2,000
Nelson Marlborough Rescue Helicopter Trust Inc	\$10,000
Netball Mainland Inc	\$2,000
No Child Left Inside Ltd	\$7,500
Order of St John South Island Region Trust Board	\$10,000
Royal NZ Plunket Soc Inc	\$7,500
SoutherNZone Rugby League Inc	\$2,500
St Peter Chanel School - Motueka	\$10,000
Tasman Bay Christian School	\$1,500
Tasman Golf Club Inc	\$2,000
Tasman Regional Sports Trust	\$15,000
Tasman Rugby Union Inc	\$40,000
Vision Motueka Development Trust	\$3,000
Volleyball Motueka - Golden Bay	\$2,500
Waimea College	\$2,500

**WAIMAKARIRI**

The Lion Foundation acknowledges the outstanding contribution of the owners and staff at the following venues which generated the funds which have led to these published grants being made: **Craft Bar & Kitchen Kaiapoi.**

Belfast Sports & Community Centre Inc	\$5,000
Canterbury Country Cricket Assn Inc	\$6,000
Canterbury Cricket Assn Inc	\$5,000

Canterbury Hockey Assn Inc	\$5,000
Canterbury Rodeo Assn Inc	\$5,000
Coastguard Waimakariri - Ashley Lifeboat Inc	\$25,000
Community Wellbeing North Canterbury Trust	\$7,500
Kaiapoi Borough School	\$8,000
Life Education Trust - Canterbury	\$4,000
Mainland North BMX Assn Inc	\$3,036
Menz Shed of Kaiapoi Trust	\$1,849
NZ Golf Inc	\$2,500
North Canterbury Basketball Assn	\$2,000
North Canterbury Rugby Sub-Union Inc	\$7,000
R13 Youth Development Trust	\$1,497
Reflections Community Trust	\$1,759
Royal NZ Plunket Soc Inc	\$10,000
Skellerup Militaire Guards Senior Marching Team	\$1,800
Student Communication & Safe Practices Charitable Trust	\$2,500
Water & Wildlife Habitat Trust Board	\$5,000
Woodend Bowling Club Inc	\$1,000
World Buskers Festival Trust	\$5,000
You Me We Us	\$2,540

**WAIMATE**

The Lion Foundation acknowledges the outstanding contribution of the owners and staff at the following venues which generated the funds which have led to these published grants being made: **Royal Tavern Waimate, Waimate Hotel.**

Bushtown Waimate Inc	\$9,000
Domain Concerts Trust Board	\$5,000
Makikihi School	\$2,000
Order of St John South Island Region Trust Board	\$20,000
Royal NZ Plunket Soc Inc	\$10,000
SANZ - Victoria Scout Group	\$4,000
St Patrick's School - Waimate	\$1,565
Tennis Canterbury Region Inc	\$2,000
Waihao Downs Tennis Club Inc	\$8,000
Waimate '50' Motorsport Inc	\$15,000
Waimate Bowling Club Inc	\$1,232
Waimate Bridge Club Inc	\$4,000
Waimate Caledonian Soc Inc	\$674
Waimate Competition Soc Inc	\$3,000
Waimate Croquet Club Inc	\$2,240
Waimate Free Kindergarten Assn Inc	\$10,000
Waimate Golf Club Inc	\$6,449
Waimate Gymnastics Club Inc	\$1,770
Waimate High School	\$2,778
Waimate Kennel Soc Inc	\$340
Waimate Main School	\$60,000
Waimate Pottery Group Inc	\$575
Waimate Rugby Football Club Inc	\$7,000
Waimate Shears NZ Spring Shearing Championships Inc	\$50,000
Waimate Tennis Club Inc	\$17,000
Waimate Trotting Club Inc	\$6,500

**WESTLAND**

The Lion Foundation acknowledges the outstanding contribution of the owners and staff at the following venues which generated the funds which have led to these published grants being made: **Stumpers, Beachfront Hotel.**

BWPA - Kaniere Playcentre	\$15,000
Burwood Academy Trust	\$2,000
Canterbury Cricket Assn Inc	\$5,000
Canterbury West Coast Sports Trust	\$5,000
Christchurch Pops Choir Inc	\$3,000
Heart Kids NZ Inc	\$1,000
Hokitika Gymnastics Club Inc	\$10,000
Hokitika Rugby League Club Inc	\$4,600
Hokitika School	\$6,000
Kiwi Rugby Football Club Inc	\$7,000
Lake Kaniere Yacht & Power Boat Club Inc	\$2,480
Life Education Trust NZ Inc	\$1,000
NZ Spinal Trust	\$2,500
Netball Mainland Inc	\$2,000
Old Girls Netball Inc	\$4,000
Order of St John South Island Region Trust Board	\$10,000
Parafed Canterbury Inc	\$1,000
Royal NZ Plunket Soc Inc	\$7,500
Seido Karate Hokitika Inc	\$6,000
South Westland Rugby Football Club Inc	\$4,000
SoutherNZone Rugby League Inc	\$2,500
St Marys Primary School - Hokitika	\$25,000
West Coast Badminton Assn	\$3,000
West Coast Basketball Assn Inc	\$10,000
West Coast Hockey Assn Inc	\$2,500
West Coast Riding for the Disabled Inc	\$10,000
West Coast Rugby Football Union Inc	\$4,000
Westland District Council	\$1,500
Westland Excelsior St Mary's Team Sports Club (West's) Inc	\$6,000
Westland Industrial Heritage Park Inc	\$10,000



**We may be able to help your club, charity or community group too.**

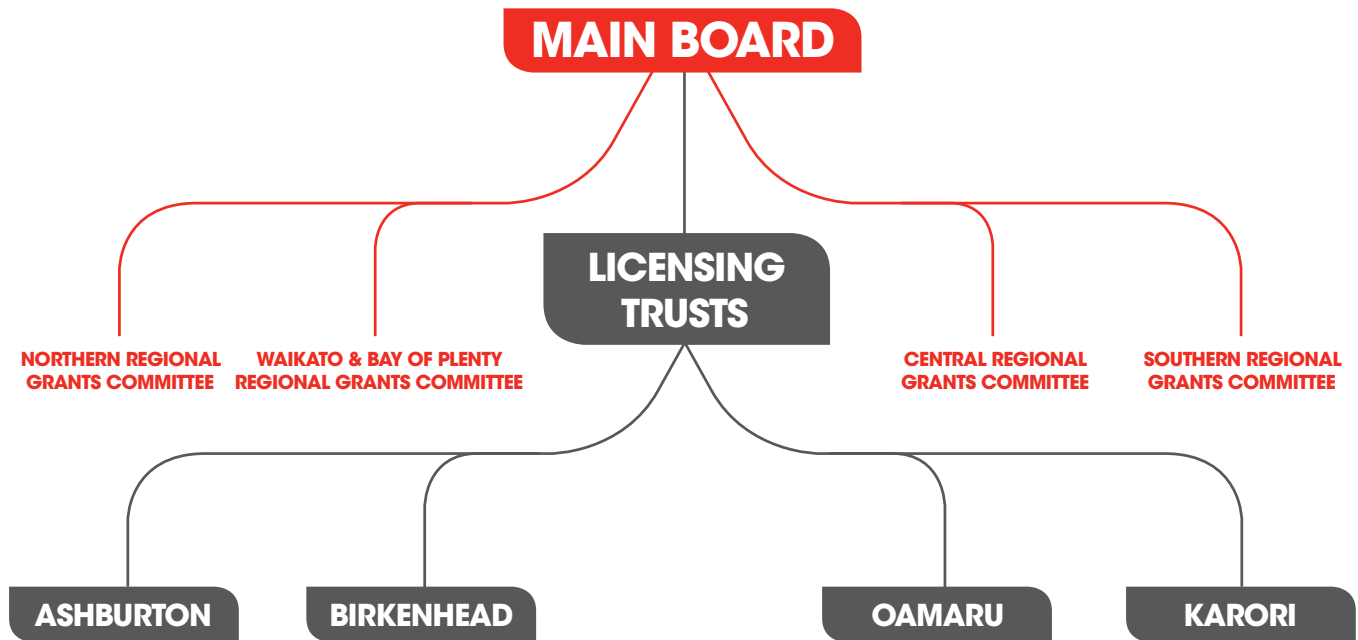
**To apply for a grant, just complete our simple form available at:**

**[lionfoundation.org.nz](http://lionfoundation.org.nz)**

**or at your local Lion Foundation venue.**

**THE LION FOUNDATION**  
Here for good

# Local people involved in **making local decisions**



*The Lion Foundation touches the lives of thousands of New Zealanders and their communities, every day, 365 days of the year. We would love to be able to help your club, charity or community group too.*

## Follow these easy steps to apply for a grant:

1. **Go to** [www.lionfoundation.org.nz](http://www.lionfoundation.org.nz)
2. **Check** that funding is available in your area.
3. **Check** that your group is eligible for funding from The Lion Foundation.
4. **Check** your intended request does not fall into the 'things we can't fund' list.
5. **Download** and print an application form, or pick one up at your local Lion Foundation venue.
6. **Pay close attention** to the checklist on the application form. Call us on 0800 802 908 if you can't tick all of the boxes.
7. **Follow the instructions** on the form carefully (including providing contact people and **email addresses**).
8. **Use the correct postage** – having your application returned to you due to insufficient postage will delay any decision.
9. **Please allow at least 8 weeks** to have your application considered and to receive a decision.
10. **Please note** that all correspondence regarding applications, including results, is done by email.

