



2022 ANNUAL REPORT

Our vision is for a better Aotearoa New Zealand, by supporting communities throughout New Zealand through the sustainable and ethical generation of community funding in a way that minimises harm and is consistent with the purposes of the Gambling Act.

We value integrity, compelling us to act honestly, ethically and transparently.

For 37 years we have been working with NZ communities to make a difference.

During this time we have granted over \$1 billion to support community projects across the country.

In the last financial year we distributed more than \$33 million to community-based organisations.

We're here to make a difference.

Here for good



Breast Cancer Foundation

Our breast health messages are being delivered to all corners of NZ this year, thanks to Lion Foundation funding. They've given us a \$100,000 grant to help our specialist breast nurses travel with Pinkie, our iconic Pink Caravan, to small towns around the country in 2022.



Chairman's Report

I didn't think I would be referencing another Covid affected year when I wrote my report in 2021. But here I am – acknowledging once again the resilience of our venue operators, our staff and our communities through yet another year of turmoil.

Now, more than ever before, we are realising the pivotal role community organisations play within our communities. The Lion Foundation has proudly supported these community organisations by distributing \$33,339,279 in this financial period. Astoundingly – that means that since 1985, The Lion Foundation has distributed over \$1 billion in grant funding to community organisations. Our sincerest gratitude and thanks to everyone who has made this possible.

This year has been fraught with challenges. I wish to acknowledge and thank my fellow trustees for their expert and careful guidance and governance of this organisation throughout. It has been a privilege to serve as the Chairman of such a capable and skilled Board of Trustees. It is also beholden on me to acknowledge Tony Goldfinch and the entire team at The Lion Foundation, who have once again provided tremendous support to our venues and the community.

In my last report I alluded to the lobbying by various groups against the Class 4 sector. This anti-gambling sentiment continues. However, The Lion Foundation continues to hold the view that subject to suitable sector reform, and in the absence of better solutions that adequately address underlying concerns, the community gambling sector is best positioned to provide lawful and responsible gambling entertainment while increasing the level of available funding for New Zealand community groups. To this end, we are heartened by the support that the sector is receiving from the community:-

"Currently, thanks to grants, we are able to keep our programmes as affordable as possible meaning that all families in the community can be included."

"If we do not have access to funding from grant providers we will simply not survive. Our membership fees will

have to increase and as we are delivering a programme for children to families with sometimes more than one child involved in a sport they will simply not have the funds to allow their children to attend. Children benefit greatly from involvement in sport and not having access to this will have a long-term detrimental effect on our communities Tamariki."

"As a charitable organisation in the Arts, we rely hugely on grants from Trusts and Foundations. Over the last 2.5 years we have lost 8 concerts due to Covid, and therefore funding to keep us afloat is more important than ever before."

"The funding can keep our nurses in the community helping people with Asthma & Chronic Obstructive Pulmonary Disease (COPD). Without that funding we would have to downsize or remove those services. In a country that has one of the highest mortality rates in the world for asthma, we can't afford to be doing that. The funding really does help us to make a difference."

The Lion Foundation continues to be a cornerstone of the New Zealand Gambling Industry and as such is contributing to many forums. We will continue to ensure that our voice is heard by remaining abreast of discussions, changes and improvements to the community gambling sector.

And finally, to the venues that operate our gaming machines – without your support and loyalty and the hard work and sheer resilience you have and continue to show within your communities during these difficult and challenging times – none of our achievements would be possible. These achievements are also yours. We thank you and assure you that we will continue to work tirelessly to ensure that our processes and practise continue to reflect best practise.

Simon Whyte
– Chairman



Young Enterprise Scheme

We know the incredible impact that doing YES has on our students each year. Without The Lion Foundation grant to help fund key salaries, we would not have been able to deliver YES to 4,700 students last year across Aotearoa. Thank you, The Lion Foundation, you are helping us to make a big impact.

Chief Executive's Report

RESILIENCE. It is a word we hear mentioned a lot these days, but it remains one that most accurately sums up the key requirement of the year that has been. From our venue partners and the hospitality sector in general, who were again heavily impacted by enforced closures, restricted trading conditions and vaccine mandates, all without the government support afforded to many other sectors. To our Lion Foundation team (particularly those within the wider Auckland region) who were again forced to adapt to remote working environments and cope with increased pressure on family structures as children were kept home from school. And also, to our communities, where community, cultural and sporting events were either unable to be held or forced to be cancelled, putting many of our critical community organisations under pressure to survive. Across the country and in all aspects of community and business - everyone has needed to be resilient.

The extended periods of enforced venue closures (particularly in the upper North Island) impacted heavily on our funding resources and whilst the impact of Covid on trading conditions has been more settled in recent months, the economic headwinds forecast for the year ahead, will again put pressure on funding levels. The long-term future of the sector remains vulnerable to environmental, economic and political factors. Competition for venues, negative lobbying, and changes in consumer preferences to online gambling continue to increase, and as such, collaboration within the sector and our key stakeholders has never been more important.

Effective and ongoing investment into our venues backed up by market leading service and support across all our stakeholders will be critical to the sustainability of our funding and ensuring those funds are delivering maximum benefit. We will continue to push for better understanding of the community funding model, explore opportunities to improve our understanding of the multi-cultural communities that we serve, and continue to work hard to minimise gambling harm.

I wish to express my gratitude and thanks to our Board of Trustees for their continued guidance and support throughout what has been another challenging year. To our Lion Foundation team for their ongoing hard work and commitment to the organization and our customers, and as always, huge thanks and gratitude to all our hardworking venue operators and those who have joined The Lion Foundation throughout our 2021/22 financial year.

Your support is greatly appreciated.

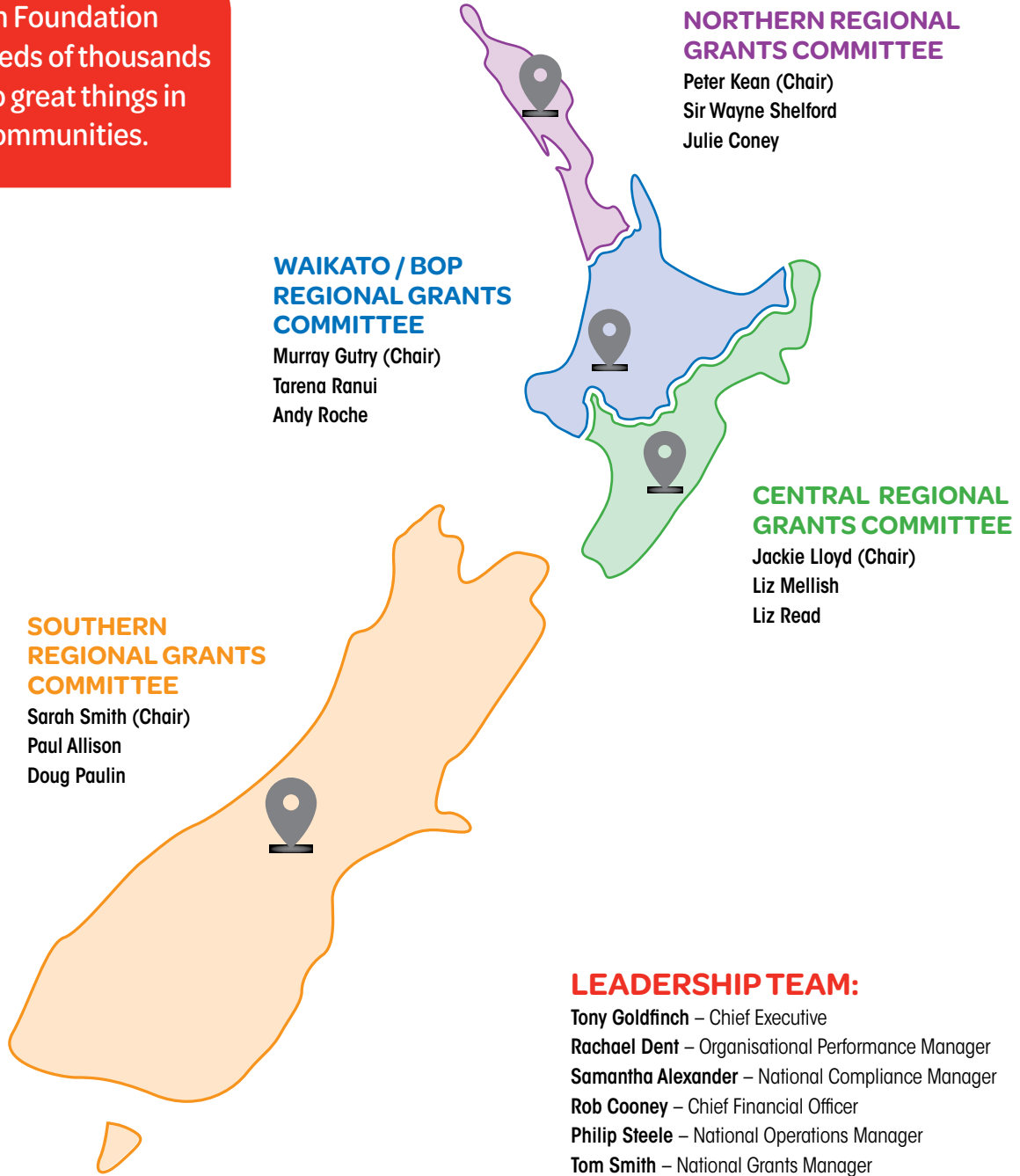
Tony Goldfinch
– Chief Executive

THE LION FOUNDATION

Regions and Personnel



The Lion Foundation helps hundreds of thousands of Kiwis do great things in their communities.



TRUSTEES:



Simon Whyte
– Chairman



Murray Gutry
– Trustee



Sarah Smith
– Trustee



Jackie Lloyd
– Trustee



Peter Kean
– Trustee

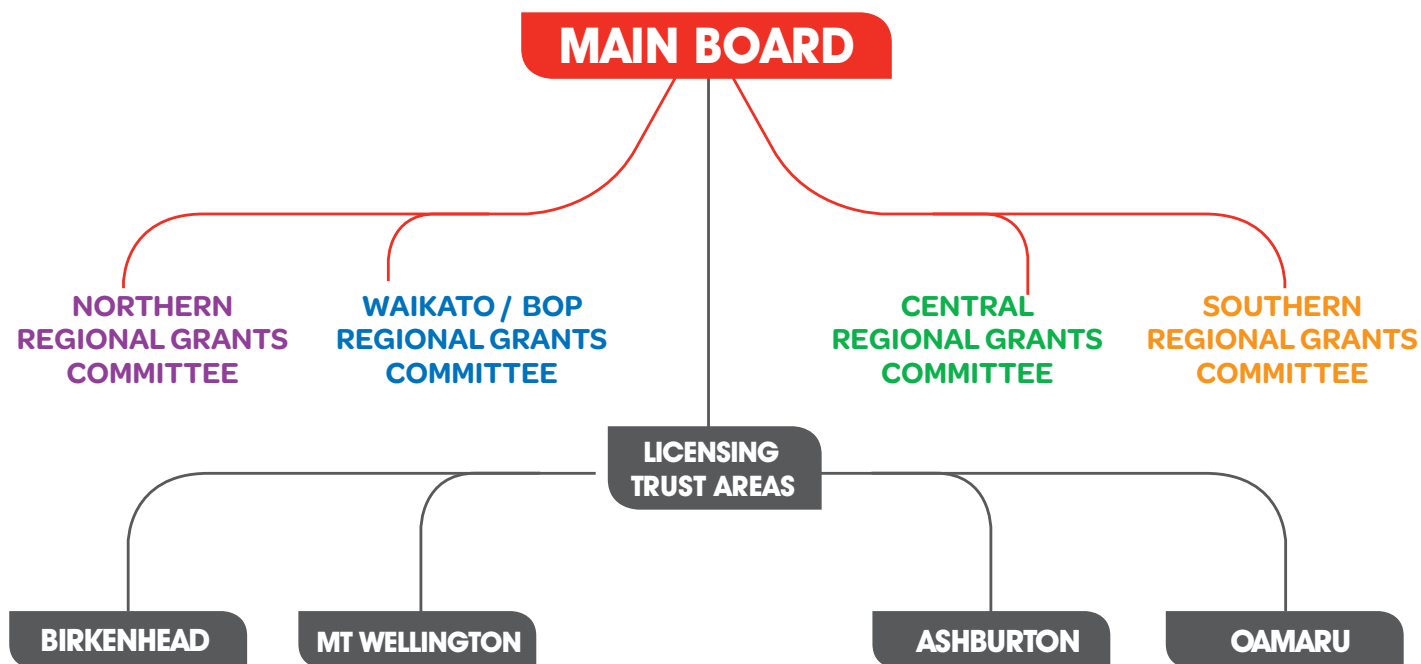


David Steele
– Trustee



Karl Rosnell
– IoD Future
Director Participant

LOCAL PEOPLE INVOLVED IN MAKING LOCAL DECISIONS



The Lion Foundation Trustees acknowledge the tremendous contribution made by the Committee Members of :-

Birkenhead Licensing Trust

Stuart Weir (Chair)
Marilyn Nicholls
Shane Prince
Marcus Reynolds
Paula Gillon

Mt Wellington Licensing Trust

Jean Dolheguy (Chair)
Nerissa Henry
Allan Verral

Braided Rivers Community Trust (Ashburton)

Roger Patterson (Chair)
Chantelle Quinn
Chris Robertson
Kieran Breakwell
Neil Brown
Timothy Silva
Rob Harnett
Fleur Tompsett

Oamaru Licensing Trust

Denise McMillan (Chair)
Alan McLay
Alister Brosnan
John Sinnamon
Peter Bond
Warren Prescott



Assistance Dogs NZ

A huge thank you for supporting our dog training programme. This past year, we have graduated 8 new teams, allowing more families and kids with disabilities new opportunities to succeed. Thank you for helping us to enrich lives throughout Aotearoa.

THE LION FOUNDATION



Venues

The Lion Foundation has been generating funds for the community since 1985 to help New Zealanders achieve great things. In the 2021-2022 financial year we approved grants totalling more than \$33 million to support community-based organisations across the country. This was made possible with the outstanding contributions from the owners and staff at the following venues where these funds were generated.

We highly value these partnerships and thank them for their loyal support – now and into the future.

NORTHERN

Auckland City Council

Club Rio
Grand Slam Sports Bar
Mt Albert Sports Bar
QF Tavern

Birkenhead Licensing Trust

Inn Field
The Good Home, Birkenhead
Wairau Sports Bar

Far North District Council

Roadrunner Tavern

Franklin District Council

Kentish Hotel

Manukau City Council

The Prospect Of Howick

Mt Wellington Licensing Trust

The Corner Bar

North Shore City Council

Northcote Tavern
On the Rocks
Takapuna Bar
The Malt

WAIKATO/BOP

Hamilton City Council

Aleways Hotel
Dinsdale Tavern
Te Rapa Tavern

Hauraki District Council

Rob Roy Hotel
Sterling Tavern

Kawerau District Council

Cayman Sports Bar

Matamata-Piako District Council

Horse and Jockey Inn
Nottingham Castle Hotel
Tahuna Tavern
Waihou Tavern

New Plymouth District Council

Val's Eatery & Bar

Opotiki District Council

Opotiki Hotel
Slim's Bar

Rotorua District Council

Cophorne Hotel Rotorua
Mitchell Downs Tavern

South Waikato District Council

Hog and Hounds Sports Bar
Nexus Wine & Café

Taupo District Council

dbar

Tauranga City Council

Captain Jacks Bar
Jack Dusty's Ale House
La Mexica
Lakes Sports Bar
McSwiggans Irish Pub
Worlds End Bar & Restaurant

Thames-Coromandel District Council

Smokey Pallet
The Junction Bar

Waikato District Council

Essex Arms
Harbour View Hotel
Taupiri Tavern

Waipa District Council

Stallions

Western Bay of Plenty District Council

Te Puke Hotel
Te Puna Tavern
The Boohai

Whakatane District Council

Murupara Hotel
Plains Hotel
The Quart House Bar

CENTRAL

Carterton District Council

Ev's Bar

Gisborne District Council

Ruatoria Hotel

Hastings District Council

Horse and Hound Hastings
Loading Ramp
Storfford Lodge Social Club
Turk's Sports Bar and TAB

Hutt City Council

Victoria Tavern

Kapiti Coast District Council

Boundary Tap & Kitchen
The Railway Hotel

Napier City Council

Masonic Hotel
The Horse and Harvest Family
Restaurant and Ale House

Palmerston North City Council

Railway Hotel and Legends Bar
Rosie O'Grady's Palmerston North
The Office
The Workshop

Rangitikei District Council

Station Hotel

South Wairarapa District Council

Empire Hotel Featherston

Tararua District Council

New Central Motor Inn & Hotel

Upper Hutt City Council

Longhorn Steak and Alehouse
Tote Pub & Pizza Furnace

Wellington City Council

Cambridge Hotel
Four Kings
The Realm Bar & Grill
Turbo Bar

Whanganui District Council

Sportz Bar
The Grand Hotel

SOUTHERN

Braided Rivers Community Trust

Ash Hills Dance Bar & Restaurant
Devon Tavern
Hinds Tavern
Hotel Ashburton
Railway Hotel Rakaia
Tinwald Tavern

Buller District Council

Hotel Reefton

Christchurch City Council

Glenbyre Tavern
Merrin Street Brewery Bar
The Sideline Sports Bar
Yaldhurst hotel

Dunedin City Council

Law Courts Hotel
Mackies Hotel
Mitchells Tavern
Mornington Taphouse
Mosgiel Tavern
Ocean Beach Hotel
The Baaa Sports Bar & Grill

Grey District Council

Union Hotel

Invercargill City Council

Eagle Hotel

Marlborough District Council

The Crow Tavern
The Good Home Blenheim
Woodbourne Tavern

Nelson City Council

623 In The City
O'Shedigans Irish Bar
Post Boy Hotel
The New Street Steakhouse

Oamaru Licensing Trust

Northstar Motels Restaurant and Bar
Sports Central Brewhouse

Queenstown Lakes District Council

Wanaka Bullock Bar

Selwyn District Council

Two Fat Possums

Tasman District Council

Telegraph Hotel

Waimakariri District Council

Craft Bar & Kitchen Kaiapoi
Mainstreet Sports Bar
Pineacres Restaurant & Bar

Waimate District Council

Royal Tavern Waimate

Westland District Council

Beachfront Hotel
Stumpers

THE LION FOUNDATION



National

Grants Distributed 1 April 2021 – 31 March 2022 (excluding grant refunds)
Grant Payment 14 April 2022 – refer Note 7 to Financial Statements

Adventure Specialties Trust	\$4,000
Arts on Tour N Z Inc	\$10,000
Asthma New Zealand Inc	\$30,000
Auckland City Mission	\$5,000
Auckland City Mission	\$50,000
Autism N Z Inc	\$25,000
Badminton N Z Inc	\$25,000
Bandquest Charitable Trust	\$20,000
Barnardos N Z	\$85,000
Basketball N Z Inc	\$100,000
Big Buddy Mentoring Trust	\$20,000
Blue Light Ventures Inc	\$80,000
Boccia N Z Inc	\$9,999
Bowel Cancer N Z Inc	\$14,400
Bowls N Z Inc	\$55,000
Brainwave Trust Aotearoa	\$5,000
Breast Cancer Foundation N Z	\$100,000
Breast Cancer Support Inc	\$10,000
Camp Quality N Z Inc	\$15,000
Coeliac N Z Inc	\$25,000
Condor Rugby Football Club Inc	\$20,000
Cure Kids	\$25,000
Dementia New Zealand Charitable Trust	\$7,320
Diabetes N Z Inc	\$45,000
Domain Concerts Trust Board	\$5,000
Glaucoma N Z	\$5,000
Graeme Dingle Foundation	\$153,000
Hearing Dogs for Deaf People N Z	\$20,000
Heart Kids N Z Inc	\$150,000
Immune Deficiencies Foundation of N Z (IDFNZ) Inc	\$30,000
Leukaemia & Blood Cancer N Z	\$60,000
Life Education Trust N Z Inc	\$80,000
Macular Degeneration N Z	\$7,318
Make A Wish Foundation of N Z Trust	\$10,000
Maori Basketball N Z Inc	\$10,000
Motorcycling N Z Inc	\$15,000
N Z Down Syndrome Assn Inc	\$20,000
N Z Endometriosis Foundation Charitable Trust	\$50,000
N Z Football Inc	\$229,686
N Z Golf Inc	\$75,000
N Z Land Search & Rescue Inc	\$80,000
N Z Marist Rugby Football Fed Inc	\$19,740
N Z Pony Clubs Assn Inc	\$3,000
N Z Red Cross Inc	\$46,848
N Z Riding for the Disabled Assn Inc	\$10,000

N Z School Cycling Assn Inc	\$10,000
N Z Softball Assn Inc	\$40,000
N Z Spinal Trust	\$100,000
N Z Squash Inc	\$30,000
N Z String Quartet Trust	\$10,000
National Heart Foundation of N Z	\$11,000
Paralympics New Zealand Inc	\$50,000
Parkinsons of N Z Charitable Trust	\$228,000
Play It Strange Trust	\$225,000
Road Safety Education Ltd	\$20,000
Royal N Z Ballet	\$85,000
Special Olympics N Z	\$145,000
SPELD N Z Inc	\$25,000
Spirit of Adventure Trust	\$50,000
Storylines Childrens Literature Charitable Trust of N Z	\$15,000
Stroke Foundation of N Z Ltd	\$45,000
Student Volunteer Army Foundation	\$40,000
Supporting Families in Mental Illness New Zealand (SFNZ) Ltd	\$15,000
Swimming N Z Inc	\$30,000
Touch N Z Inc	\$50,000
Yachting N Z Inc	\$30,000
Zeal Education Trust	\$40,000

\$3,499,311

Grant Payment 14 April 2022

Aphasia N Z (AphasiaNZ) Charitable Trust	\$20,000
Arts Foundation of N Z Inc	\$45,000
Assistance Dogs N Z	\$36,000
Auckland District Kidney Soc Inc	\$35,000
Cycling N Z Inc	\$36,000
Halberg Foundation	\$45,000
Hockey N Z Inc	\$180,000
Holocaust Centre of N Z	\$50,000
Inspiring Stories Trust	\$54,280
Malaghan Institute of Medical Research	\$50,000
Manta Watch N Z Charitable Trust	\$6,972
Mobility Assistance Dogs Trust	\$36,000
Multiple Sclerosis Soc of N Z Inc	\$25,500
N Z Aids Foundation Inc	\$20,000
N Z Rugby League Inc	\$81,000
Netball N Z Inc	\$342,000
Osteoporosis N Z Trust	\$15,000
Race for Life Trust	\$12,000
Royal N Z Plunket Trust	\$270,000
Sir Peter Blake Trust	\$22,500
Surf Life Saving N Z Inc	\$180,000
Te Ohaakii a Hine - National Network Ending Sexual Violence Together Trust	\$10,000
Tennis N Z Inc	\$31,500
Young Enterprise Trust	\$40,000

\$1,643,752



Play It Strange Trust

Play It Strange is truly grateful for The Lion Foundation grants. Their belief in the worth of our songwriting programmes for young people is wonderful.

THE LION FOUNDATION



Northern

Grants Distributed 1 April 2021 – 31 March 2022 (excluding grant refunds)
Grant Payment 14 April 2022 – refer Note 7 to Financial Statements

A Girl Called Hope	\$6,000	Big Brothers Big Sisters of N Z	\$1,900	Howick Childrens And Youth Theatre Inc	\$3,000
A K A - Mt Albert Kindergarten	\$4,000	Blue Light Ventures Inc - Whangarei	\$7,000	Howick College	\$15,000
A K A - St Heliers Kindergarten	\$8,000	Brain Injury Assn (Auckland) Inc	\$10,000	Howick Pakuranga Amateur Swimming & Life Saving Club Inc	\$5,000
A K A - Takapuna Kindergarten	\$7,500	Brain Injury Assn Northland Inc	\$10,000	Howick Pakuranga Cricket Club Inc	\$3,000
A K A - Westlake Forrest Hill Kindergarten	\$5,000	Breast Cancer Cure	\$12,000	Howick Pakuranga Hockey Club Inc	\$5,000
A K A - Westlake Forrest Hill Kindergarten	\$8,000	Bucklands Beach Assn Football Club Inc	\$10,000	Howick Softball Club (Fencibles) Inc	\$2,000
A S D Kids Community Charitable Trust	\$6,569	Busting With Life Dragon Boat Team Inc	\$7,813	Howick Squash Club Inc	\$1,000
Accounting for Charities Trust	\$4,000	C C S Disability Action Auckland Inc	\$5,000	Howick Tennis Club Inc	\$8,000
Age Concern Auckland Inc	\$20,000	Campbell Park Tennis Club	\$10,000	Huntingtons Disease Assn Auckland Inc	\$6,000
Age Concern Rodney Inc	\$10,000	Campbells Bay Tennis Club Inc	\$10,000	Indian Assn (Manukau) N Z Inc	\$15,000
Age Concern Rodney Inc	\$10,000	Campus Radio BFM Ltd	\$5,000	John Walker Find Your Field of Dreams Foundation	\$100,000
Akarana Zone of N Z R L Inc	\$5,000	Canteen Aotearoa Inc	\$8,500	Kaikohē & Districts Sportville Inc	\$5,000
Allegro Ice Dance Club Inc	\$4,000	CCS Disability Action Northland Inc	\$5,000	Kenzies Gift Charitable Trust	\$18,000
Amici Trust	\$5,000	Central Auckland Specialist School	\$15,000	Kindred Family Services	\$10,000
Anxiety N Z Trust	\$18,000	Children's Bible Ministries Inc	\$10,000	Kiwi Trust	\$992
Attainable Trust	\$5,000	Chinese Women Assn of N Z Inc	\$5,000	Life Education Trust Counties Manukau	\$8,000
Auckland Amateur Powerlifting Assn Inc	\$2,000	Christians Against Poverty N Z	\$5,000	Life Education Trust Far North	\$6,500
Auckland Basketball Services Ltd	\$20,000	Community Education Trust Auckland	\$5,000	Life Education Trust North Shore	\$10,000
Auckland Bowling Club Inc	\$15,000	Counties Manukau Zone of N Z R L Inc	\$5,000	Living Theatre Charitable Trust	\$8,490
Auckland Cambodian Youth & Recreation Trust	\$2,978	Deaf Aotearoa Holdings Ltd	\$12,000	Louise Perkins Foundation	\$5,000
Auckland Chamber Orchestra Trust Board	\$12,000	Documentary N Z Trust	\$10,000	Lynfield College Community Childcare Centre Incorporated	\$5,000
Auckland Childrens Christmas Parade Trust	\$10,000	Dress For Success (Northland) Inc	\$10,000	Mairangi Bay Bowling Club Inc	\$3,000
Auckland City Athletics Club Inc	\$3,500	East Coast Bays Assn Football Club Inc	\$5,000	Manly Park Seniors Tennis Club	\$980
Auckland Coastguard Inc	\$70,000	East Coast Bays Cricket Inc	\$5,000	Manukau Orchestral Soc Inc	\$3,000
Auckland Cricket Assn Inc	\$15,000	Econet Charitable Trust	\$10,000	Marlins Deaf Rugby Union Inc	\$10,000
Auckland Diving Community Trust	\$15,000	Eden-Roskill District Cricket Club Inc	\$5,000	Mens Health Trust N Z	\$10,000
Auckland Festival Trust	\$5,000	Ellerslie Assn Football Club Inc	\$25,000	Mercy Hospice Auckland Ltd	\$10,000
Auckland Golf Inc	\$5,000	Friendship House Trust	\$5,000	Milford Bowling Club Inc	\$5,000
Auckland Grammar Rowing Club Inc	\$3,000	Garden to Table Trust	\$15,000	Milford Tennis Club Inc	\$3,000
Auckland Netball Centre Inc	\$30,000	Glen Innes Chinese Groups Inc	\$3,000	Moerewa School	\$6,500
Auckland Paraplegic & Physically Disabled Assn Inc	\$10,000	Glenavon School	\$10,000	Momentum Charitable Trust	\$10,000
Auckland Performing Arts Centre at Western Springs Inc	\$30,000	Glendowie Boating Club Inc	\$10,000	Mt Albert Grammar School	\$5,000
Auckland Rugby League Inc	\$35,000	Glendowie School	\$2,500	Mt Eden Swimming Club Inc	\$2,000
Auckland Sport	\$10,000	Good Shepherd School (Balmoral)	\$4,000	Mt Roskill Primary School	\$4,000
Auckland Sportclimbing Club Inc	\$6,000	Graeme Dingle Foundation Auckland	\$10,000	Multiple Sclerosis Soc of Auckland Inc	\$15,000
Auckland Symphony Orchestra Inc	\$3,600	Great Families Charitable Trust	\$5,000	Mums Clique	\$30,000
Auckland United Football Club Inc	\$5,000	Green Room Rhythm of Youth Charitable Trust	\$10,000	Muscular Dystrophy Northern Inc	\$14,289
Auckland Wheelbreakers Inc	\$5,000	Greenhithe Football Club Inc	\$10,000	N Z Choral Fed Inc - Auckland	\$8,000
Audio Foundation	\$5,000	Grey Lynn Park Festival Trust	\$5,000	N Z Rugby Foundation Inc	\$25,000
Babylon Charitable Trust	\$5,000	Harbour Raiders Volleyball Club Inc	\$2,000	N Z Warbirds Assn Inc.	\$5,000
Balmoral Badminton Club Inc	\$2,500	Harbour Voices Inc	\$2,000	National Foundation for the Deaf Inc	\$20,000
Bay of Islands College	\$3,000	Harlequin Musical Theatre Inc	\$5,367	National Youth Theatre Company Trust	\$5,000
Becroft Park Tennis Club Inc	\$10,000	Hearing House Services Ltd	\$75,000	Neuro Connection Foundation	\$5,000
		Hibiscus Coast Music Soc Inc	\$350	New Life Charitable Trust	\$5,000
		Hibiscus Coast Youth Council Inc	\$4,279	New Windsor School	\$5,000
		Home and Family Counselling Inc	\$5,000		
		Howick Brass Inc	\$4,000		

THE LION FOUNDATION

Northern

Grants Distributed 1 April 2021 – 31 March 2022 (excluding grant refunds)
Grant Payment 14 April 2022 – refer Note 7 to Financial Statements



New Zealand Writers Guild - Puni Taatui o Aotearoa	\$5,000	Probasee Bengalee Assn of N Z Inc	\$2,000	Sylvia Park School	\$2,500
Nightsong	\$7,000	Project Restore N Z Inc	\$14,000	Takapuna Boating Club Inc	\$10,000
No 2 District Fed of N Z Soccer Inc	\$15,000	Raukatauri Music Therapy Trust	\$30,000	Takapuna Bowling Club Inc	\$8,000
North Harbour Indian Sports Club Inc	\$4,000	Red Beach Surf Life Saving Club Inc	\$7,975	Takapuna District Cricket Club	\$3,000
North Harbour Rugby Union Inc	\$35,000	Regent Community Trust	\$4,500	Takapuna Rugby Football Club Inc	\$8,216
North Harbour Synchronised Swimming Club	\$6,000	Roosters Softball Club	\$16,156	Tamaki Community Development Trust	\$10,000
North Shore Amateur Swimming Club	\$3,000	S A N Z - Tauhinu Scout Group	\$3,000	Tamaki Makaurau Maori Hockey Inc	\$10,000
North Shore Camerata Inc	\$3,280	Sanctuary Community Organic Garden Mahi Whenua Inc.	\$5,000	Te Karanga Charitable Trust	\$5,000
North Shore Community Toy Library Inc	\$4,300	Shore Rovers Netball Club Inc	\$2,500	Te Papapa School	\$4,000
North Shore Squash Rackets Club Inc	\$7,125	Short-Handed Sailing Assn of N Z Inc	\$8,883	Te Whakaora Tangata	\$8,000
North Shore Tigers Australian Football Club Inc	\$5,000	Silverdale Tennis Club	\$5,366	Tennis Auckland Region Inc	\$10,000
North Shore United Hockey Club Inc	\$3,000	Sir Peter Blake Marine Education & Recreation Centre Inc	\$5,000	Tennis Northern Region Inc	\$20,000
Northland Cricket Assn Inc	\$7,580	Southern Districts Hockey Club Inc	\$2,000	The Attitude Trust	\$40,000
Northland Paraplegic & Physically Disabled Assn	\$1,000	Sowers Trust	\$6,000	The Yes And Trust	\$10,000
Onehunga Sports Football Club	\$10,000	Special Olympics Bay of Islands	\$1,200	Tikipunga Assn Football Club Inc	\$1,000
Operating Theatre Trust	\$8,000	Special Olympics North Harbour	\$1,800	Toi Ora Live Art Trust	\$4,000
Pacific Music Awards Trust	\$10,000	Special Olympics Upper North Island Regional Council	\$9,830	Training and Budget Services Inc	\$2,500
Paihia Tennis Club Incorporated	\$10,000	St Josephs Catholic School Onehunga	\$5,900	United Swimming Club Inc	\$8,000
Papatoetoe Cricket Club Inc	\$2,630	St Matthews Chamber Orchestra Inc	\$8,000	Upside Youth Mentoring Aotearoa	\$10,000
Papatoetoe Tennis Club Inc	\$1,875	St Patrick's Festival Trust	\$8,000	Wainoni Park Pony Club	\$10,000
Parent & Family Resource Centre Inc	\$3,000	St Peter Chanel Preschool Trust	\$10,000	Wakaaranga School	\$5,000
Parklands Playcentre	\$1,120	St Thomas School	\$5,000	Well Women & Family Trust	\$50,000
Pasifika Festival Villages Charitable Trust	\$30,000	Starship Foundation	\$17,500	Wesley Athletic & Harrier Club	\$1,800
Pet Whisperer Rescue Trust	\$694	Stepsforward Inc	\$5,000	Wesley Intermediate School	\$2,500
Piha Surf Life Saving Club	\$10,000	Stuttering Treatment & Research Trust (Auckland)	\$6,000	Wesley Primary School	\$5,000
				Whangaparaoa College	\$7,895
				Whangaparaoa Golf Club Inc	\$10,000
				Whangaparaoa School (Auckland)	\$20,000



John Walker Find Your Field of Dreams

FYFOD is indeed hugely appreciative of the continued ongoing support from The Lion Foundation ensuring the sustainability and success of the Award-winning Community Swim programme. celebrating the delivery of the 1.5 Millionth Free Swim in 2022, is an outstanding achievement – congratulations to The Lion Foundation for being pivotal in this milestone.

THE LION FOUNDATION



Northern

Grants Distributed 1 April 2021 – 31 March 2022 (excluding grant refunds)
Grant Payment 14 April 2022 – refer Note 7 to Financial Statements

Whangarei Golf Club Inc	\$2,300
Whangarei Group Riding for the Disabled Inc	\$5,000
Whau Valley School	\$1,000
Windsor Park LifeCare Trust	\$5,000
Woven Earth (Trust)	\$5,000
Y M C A North Inc	\$45,000
Youth in Transition Charitable Trust	\$20,000

\$2,085,032

Northcote School	\$20,000
Northern Rovers FC	\$60,000
Oranga Wairua Trust	\$42,000
Shepherds Park Squash Club Inc	\$9,297
Sunnybrae Bowling Club Inc	\$34,000
Target Road Primary School	\$7,000
Wairau Maori Art Gallery Charitable Trust	\$8,000

\$1,122,257

Stanhope Road School	\$20,880
StarJam Charitable Trust	\$4,214
StarJam Charitable Trust	\$20,000

\$323,798

Grant Payment 14 April 2022

Auckland Observatory & Planetarium Trust Board	\$14,000
Auckland Observatory & Planetarium Trust Board	\$3,000

Auckland Softball Assn Inc	\$3,000
Auckland Table Tennis Assn Inc	\$10,000
Bailey Road School	\$30,000

Communicare - Civilian Maimed Assn (Auckland) Inc	\$10,000
Dunkirk Road Activity Centre Inc	\$9,700
Ellerslie Theatrical Soc Inc	\$15,000

Ellerslie Theatrical Soc Inc	\$10,000
Ellerslie Toy Library Inc	\$3,400
Glen Innes Family Centre Charitable Trust	\$22,065

Glen Innes Food Bank	\$20,000
Glen Innes Playcentre	\$2,000
Kidney Kids of N Z Inc	\$2,386

Life Education Trust Auckland Central Inc	\$5,000
Life Education Trust Auckland Central Inc	\$10,000
Marian Early Childhood Centre	\$5,051

Marist Brothers Old Boys Rugby Club Auckland Inc	\$5,030
Maungarei Community Christian Trust	\$36,000
Millennium 21 Trust Board	\$10,000

Millennium 21 Trust Board	\$10,000
Mt Wellington Rugby Football Club	\$2,104
One Tree Hill College	\$20,000

Otahuhu College	\$5,225
Panmure Combined Probus	\$2,576
Panmure Squash Rackets Club Inc	\$2,495

Royal N Z Plunket Trust - Mt Wellington	\$2,500
Ruapotaka Primary School	\$7,244
St Pauls College (Ponsonby)	\$928

Stanhope Road School	\$20,880
StarJam Charitable Trust	\$4,214
StarJam Charitable Trust	\$20,000

\$896,327

Birkenhead Licensing Trust

A KA - Birkenhead Kindergarten	\$25,000
A KA - Kauri Park	\$25,000
Aratika Water Sports Club Inc	\$6,095
Bayview School	\$30,000
Beach Haven Tennis Club	\$12,000
Beachhaven Bowling Club Inc	\$16,675
Beneficiaries Advocacy & Information Services Inc	\$30,000
Birkenhead Bowling Club Inc	\$50,000
Birkenhead City Cricket & Sports Club Inc	\$50,000
Birkenhead Swim Club Inc	\$950
Birkenhead Town Centre Assn Inc	\$59,925
Birkenhead United Assn Football & Sports Club Inc	\$65,000
Fernglen Native Plant Gardens Educational Charitable Trust	\$10,596
Glenfield Baptist Church	\$15,000
Glenfield College	\$40,000
Glenfield Community Centre Inc	\$22,916
Good Works Charitable Trust	\$25,000
Grief Support and Education Charitable Trust Board	\$30,000
Highbury Community House Inc	\$30,000
Kaipatiki Community Facilities Trust	\$95,000
Kaipatiki Youth Development Trust	\$58,000
NBC Community Trust	\$14,214
North Shore Sikh Soc	\$12,750
North Shore Womens Centre	\$15,617
Northcote & Birkenhead Tigers Rugby League & Sports Club Inc	\$45,000
Northcote Birkenhead Rugby Union & Sports Club Inc	\$40,000
Northcote Bowling Club Inc	\$20,000
Northcote College	\$52,895
Northcote Intermediate School	\$44,327

Mt Wellington Licensing Trust

Auckland Observatory & Planetarium Trust Board	\$14,000
Auckland Observatory & Planetarium Trust Board	\$3,000
Auckland Softball Assn Inc	\$3,000
Auckland Table Tennis Assn Inc	\$10,000
Bailey Road School	\$30,000
Communicare - Civilian Maimed Assn (Auckland) Inc	\$10,000
Dunkirk Road Activity Centre Inc	\$9,700
Ellerslie Theatrical Soc Inc	\$15,000
Ellerslie Theatrical Soc Inc	\$10,000
Ellerslie Toy Library Inc	\$3,400
Glen Innes Family Centre Charitable Trust	\$22,065
Glen Innes Food Bank	\$20,000
Glen Innes Playcentre	\$2,000
Kidney Kids of N Z Inc	\$2,386
Life Education Trust Auckland Central Inc	\$5,000
Life Education Trust Auckland Central Inc	\$10,000
Marian Early Childhood Centre	\$5,051
Marist Brothers Old Boys Rugby Club Auckland Inc	\$5,030
Maungarei Community Christian Trust	\$36,000
Millennium 21 Trust Board	\$10,000
Millennium 21 Trust Board	\$10,000
Mt Wellington Rugby Football Club	\$2,104
One Tree Hill College	\$20,000
Otahuhu College	\$5,225
Panmure Combined Probus	\$2,576
Panmure Squash Rackets Club Inc	\$2,495
Royal N Z Plunket Trust - Mt Wellington	\$2,500
Ruapotaka Primary School	\$7,244
St Pauls College (Ponsonby)	\$928

THE LION FOUNDATION



Waikato / BOP

Grants Distributed 1 April 2021 – 31 March 2022 (excluding grant refunds)
Grant Payment 14 April 2022 – refer Note 7 to Financial Statements

Activate Church Tokoroa	\$24,670	Bay of Plenty Multiple Sclerosis Soc Inc	\$20,000	City of Tauranga Pipe Band Inc	\$15,000
Adastra Foundation	\$30,000	Bay of Plenty Opotiki Rodeo Assn Inc	\$15,000	Community Development Trust	\$5,000
Age Concern Hauraki Coromandel Inc	\$7,514	Bay of Plenty Philippine Friendship Soc Inc	\$2,798	Complex Chronic Illness Support Inc	\$25,000
Age Concern Rotorua District Inc	\$5,000	Bay of Plenty Philippine Friendship Soc Inc	\$3,000	Conductive Education Taranaki	\$5,000
Age Concern Taupo Inc	\$7,000	Bay of Plenty Rowing Assn	\$17,667	Detour Theatre Trust	\$13,800
AIMS Games Trust	\$50,000	Bay of Plenty Rugby Union Inc	\$130,000	Dress for Success Hamilton Trust	\$10,000
Air Training Corps Association of New Zealand No 34 Squadron	\$8,950	Bay of Plenty Rugby Union Inc	\$100,000	Eagles Golfing Soc of Waikato Inc	\$1,500
Alan Duff Charitable Foundation	\$62,459	Bay of Plenty Sailing Academy Trust	\$10,000	East End Surf Life Saving Club Inc	\$6,000
Albion Cricket Club Tauranga Inc	\$8,000	Bay of Plenty Touch Assn Inc	\$15,000	Eastern Bay Canoe Racing Club Inc	\$20,000
Alf's Imperial Fifth Waikato Dragons Inc	\$4,000	Beerescourt Tennis Club Inc.	\$3,600	Eastern Bay of Plenty Cricket Club Inc	\$3,591
Alzheimers Soc Taupo Inc	\$20,000	Bethlehem Primary School	\$6,000	Eastern Bay of Plenty Hunt Club Inc	\$5,596
Alzheimers Soc Tauranga Inc	\$15,000	Big Brothers Big Sisters Eastern Bay of Plenty	\$20,869	Eastern Bay of Plenty Rugby Sub-Union Inc	\$6,351
Alzheimers Society Eastern Bay of Plenty Inc	\$12,133	Bike Taupo Advocacy Group Inc	\$7,564	Eastlink Community Hub	\$1,725
Alzheimers Taranaki Inc	\$16,796	Bike Taupo Advocacy Group Inc	\$10,000	Edgecumbe College	\$23,000
Amped4Life Trust Inc	\$15,000	Blue Light Ventures - Taupo	\$30,000	Edgecumbe Sports Club Inc	\$19,179
Amputee Golf N Z	\$6,120	BMX New Zealand Inc	\$30,000	Epilepsy Association of NZ Inc	\$36,000
Aorangi Primary School - Rotorua	\$20,000	Body and Soul Taranaki Trust	\$2,645	Equipotential NZ Inc	\$10,000
Apanui School	\$80,000	Bowentown Boating and Sportfishing Club Inc	\$35,732	Evolution Aquatics Tauranga Inc	\$7,500
Aquinas College	\$4,282	Bowls Bay of Plenty Inc	\$20,000	F C Western Inc	\$6,619
Aquinas College	\$1,936	Bowls Matua Inc	\$7,000	F C Western Inc	\$3,000
Aratika Charitable Trust	\$9,750	Bowls Taranaki Inc	\$2,701	Families Achieving Balance Charitable Trust	\$5,000
Arawa Bowling Club Inc	\$556	Bowls Waikato Inc	\$10,000	Family and Financial Solutions Trust	\$5,000
Argos Gymnastic Club Inc	\$9,074	Boys Brigade in N Z Inc	\$13,076	Fitzroy Surf Club Inc	\$7,780
Artistic Swimming New Zealand Inc	\$3,045	Brain Injured Children Trust	\$6,774	Flagstaff Club Inc	\$11,745
Arts Festival Taranaki Charitable Trust Board	\$8,251	Breast Cancer Support Service Tauranga Trust	\$13,310	Flagstaff Club Inc	\$10,000
Arts for Health Community Trust	\$6,408	Budget Advisory Services Gateway Opotiki Charitable Trust Inc	\$5,880	Forestland Rugby League & Sports Club Inc	\$5,624
Ashbrook School	\$15,000	C C S Disability Action Bay of Plenty Inc	\$12,500	Francis Douglas Memorial College	\$4,933
Asthma & Respiratory Services (Waikato) Inc	\$10,000	C C S Disability Action North Taranaki Inc	\$6,000	Frankton School	\$45,750
Athletics Waikato Bay of Plenty Inc	\$5,832	C N I K T - Central Kids Edgecumbe Kindergarten	\$4,000	Fraser Tech Rugby Football Club Inc	\$15,000
Awakeri Playcentre	\$13,715	C N I K T - Central Kids Jackson Park Kindergarten	\$9,000	Friends of the Otahu Catchment Area Inc	\$393
Awakeri School	\$3,581	C N I K T - Central Kids Mill Cres Kindergarten	\$2,940	Galatea School	\$20,000
B o P Indoor Bowls Centre Inc	\$4,595	C N I K T - Central Kids Putauaki Kindergarten	\$7,500	Gate Pa Indoor Bowls Club Inc	\$1,803
Badminton Thames Valley Inc	\$2,216	Cancer Soc of N Z Taranaki Centre Inc	\$3,000	Gate Pa Tennis Club Inc	\$10,030
Balloons Over Waikato Charitable Trust	\$15,000	CAPS Hauraki Inc.	\$20,000	Get Kids Active Charitable Trust	\$50,000
Basketball Pacific Inc	\$15,000	Catholic Family Support Services	\$6,000	Get Smart Tauranga Trust	\$10,000
Basketball Pacific Inc	\$20,000	CCS Disability Action Waikato Inc	\$8,300	Geyser City Sports & Cultural Club Inc	\$5,000
Basketball Taranaki Inc	\$10,000	Central Cricket Club	\$814	Glenview Community Centre Inc	\$4,052
Bay of Plenty Badminton Assn Inc	\$40,000	Centre Stage Inc - Taupo	\$14,536	Golden Sands Early Learning Centre	\$5,000
Bay of Plenty Badminton Assn Inc	\$35,000	Citizens Advice Bureau - Taupo	\$8,346	Golden Sands School	\$8,360
Bay of Plenty Classic Aircraft Trust	\$10,000	Citizens Advice Bureaux N Z Inc	\$20,000	Goldfields Railway Inc	\$50,000
Bay of Plenty Coast Rowing Club Inc	\$6,925			Goldfields Special Needs School	\$10,000
Bay of Plenty Cricket Assn Inc	\$50,000			Graeme Dingle Foundation Rotorua	\$10,400
Bay of Plenty Dragon Boat Club Inc	\$7,500			Graeme Dingle Foundation Waikato	\$50,000
Bay of Plenty Hockey Assn Inc	\$6,000			Graeme Dingle Foundation Western Bay of Plenty	\$85,000
Bay of Plenty Kart Club Inc	\$7,000			Great Lake Taupo Hockey Club Inc	\$20,000

THE LION FOUNDATION



Waikato / BOP

Grants Distributed 1 April 2021 – 31 March 2022 (excluding grant refunds)
Grant Payment 14 April 2022 – refer Note 7 to Financial Statements

Greenpark School	\$8,802	Katikati Community Toy Library Inc	\$2,617	Matamata Hearing Assn Inc	\$2,800
Greerton Cricket Club Inc	\$5,558	Katikati Croquet Club Inc	\$25,000	Matamata Intermediate School	\$49,837
Greerton Marist Recreation & Community Sports Club Inc	\$20,000	Katikati Croquet Club Inc	\$2,375	Matamata Primary School	\$7,000
Grief Support Services Inc	\$25,000	Katikati Funfest Charitable Trust	\$10,448	Matatoki School	\$3,655
Gymnastica Gym Club Inc	\$10,000	Katikati Innovative Horticulture Trust	\$18,360	McKenzie Centre Trust	\$15,000
Gymnastica Gym Club Inc	\$5,000	Katikati Olympic Style Wrestling Club Inc	\$1,110	Melville Assn Football Club Inc	\$30,000
Hamilton B M X Club Inc	\$20,000	Katikati Rugby & Sports Club Inc.	\$50,000	Moanataiari School Board of Trustees	\$30,000
Hamilton Boys High School	\$70,000	Kauaetangohia Hapu Trust	\$14,260	Mockingbird Charitable Trust	\$5,000
Hamilton Christmas Charitable Trust	\$15,012	Kawerau District Council	\$50,000	Morrinsville Agricultural & Pastoral Soc Inc	\$12,000
Hamilton Citizens Band Inc	\$5,000	Kawerau District Council	\$50,000	Morrinsville Art Gallery Charitable Trust	\$15,000
Hamilton City Gymsports Inc	\$30,000	Kawerau Golf & Squash Club	\$7,203	Morrinsville Bowling Club Inc	\$45,000
Hamilton Cricket Assn Inc	\$30,000	Kereone Rugby & Sports Club	\$6,000	Morrinsville Chamber of Commerce	\$30,000
Hamilton Floorball Club	\$3,000	Kidz Need Dadz Charitable Trust BoP Inc	\$15,000	Morrinsville College	\$24,266
Hamilton Girls High School	\$35,000	Knighton Normal School	\$20,000	Morrinsville Cricket Assn Inc	\$19,422
Hamilton Hawks Sports Club Inc	\$5,000	Lake City Athletic Club Inc	\$4,224	Morrinsville Golf Club Inc	\$40,000
Hamilton Inline Hockey Club Inc	\$5,000	Lake Taupo Cycle Challenge Trust	\$8,000	Morrinsville RSA Bowling Club Inc	\$6,327
Hamilton Marist Rugby Football Club Inc	\$30,000	Lake Taupo District Sports Advisory Council Inc	\$6,254	Morrinsville Squash Rackets Club Inc	\$10,198
Hamilton Old Boys Cricket Club Inc	\$15,000	Lakeland Powerboat Club Inc	\$3,187	Morrinsville Wheelers	\$3,416
Hamilton Old Boys Rugby and Sports Club Inc	\$17,500	Lakes Football Club Incorporated	\$15,000	Mount Maunganui Sports Club Inc	\$15,000
Hamilton Squash & Tennis Club Inc	\$7,000	Lichfield School	\$10,000	Mount Maunganui Tennis Club	\$9,720
Hamilton Star University Cricket Club Inc	\$8,944	Life Education Trust - Central Plateau	\$14,924	Mt Maunganui Amateur Swimming Club Inc	\$20,000
Hamilton West School	\$13,000	Life Education Trust Eastern Bay of Plenty	\$10,000	Mt Maunganui College	\$5,217
Hamilton Woodturners Inc	\$2,500	Life Education Trust Rotorua Area	\$12,500	Mt Maunganui College	\$4,565
Hauraki Bowling Club	\$9,000	Life Education Trust Western Bay of Plenty Region	\$10,000	Mt Maunganui Lifeguard Service Inc	\$37,800
He Iwi Kotahi Tauranga Moana Charitable Trust	\$5,000	Lifelink Samaritans Inc	\$9,385	Mt Tauhara Gymnastics Inc	\$20,000
Headway Brain Injury Assn B O P Inc	\$10,000	Lifestyle Trust	\$7,500	Murupara Budget Advisory Services Trust	\$21,840
Hearing Assn Hamilton & Districts Inc	\$1,711	Link House Birthright Waikato Trust	\$9,500	Murupara Golf Club Inc	\$7,826
Hindu Council of New Zealand Inc	\$2,480	Linkt Community Trust	\$10,000	Musical Theatre N Z Inc	\$1,200
Homes of Hope Charitable Trust	\$10,000	Literacy Taupo Inc	\$4,166	Mustangs Inline Hockey Club Inc	\$5,000
Homewood Park Tennis Club Inc.	\$3,329	Live for More Charitable Trust	\$6,250	N Z Barok Inc	\$2,210
Hospice Eastern Bay of Plenty	\$25,000	Living Well Trust	\$6,000	N Z Choral Federation – Waikato/Bay of Plenty	\$2,711
House of Science N Z Charitable Trust	\$20,000	M S Waikato Trust	\$15,000	N Z Country Music Star Awards (1994) Inc	\$3,715
Huntly College	\$4,980	Maeroa Intermediate School Board of Trustees	\$10,000	N Z Masters Billiards & Snooker Assn Inc	\$3,020
Huntly College Old Boys Rugby Football Club Inc	\$3,398	Makefu Volunteer Coastguard Inc	\$50,000	N Z P F - Tauriko Playcentre	\$5,000
Huntly Golf Club Inc	\$30,000	Manawahe Eco Trust	\$5,000	N Z P F - Te Puke Playcentre	\$4,651
Impact Gymsport Academy	\$13,768	Manawaru Historical Society Incorporated	\$1,260	N Z Paramedic Education & Research Charitable Trust	\$4,000
Insight Endometriosis (formerly Endometriosis Waikato)	\$12,825	Marfell Community School	\$15,000	N Z Soc for Music Education Inc (MENZA)	\$4,230
John Paul College - Rotorua	\$6,869	Marist Womens Hockey Club Inc	\$1,610	N Z Wheelchair Tennis Inc	\$1,195
Kaitiakitanga Charitable Trust	\$20,000	Matamata Assn Football Club Inc	\$30,000	Netball Taranaki Inc	\$5,000
Karangahake School	\$10,000	Matamata Bowling Club Inc	\$3,756	Netball Waikato Bay of Plenty Zone Inc	\$143,636
Karangahake School	\$4,690	Matamata Bridge Club Inc	\$17,727	Netball Waikato Bay of Plenty Zone Inc	\$55,699
Karldon Trust	\$6,041	Matamata College	\$40,000	Neurogenesis Trust Board	\$3,496
Katch Katikati Inc	\$20,000	Matamata Country Music Club	\$4,218		
Katikati College	\$65,000	Matamata Golf Club Inc	\$10,000		

THE LION FOUNDATION



Waikato / BOP

Grants Distributed 1 April 2021 – 31 March 2022 (excluding grant refunds)
Grant Payment 14 April 2022 – refer Note 7 to Financial Statements

New Plymouth Boys High School	\$5,000	Northern United Sports Club Inc	\$25,000	Otumoetai Football Club Inc	\$7,932
New Plymouth Contract Bridge Club Inc	\$2,000	Ohope Junior Soccer Club	\$2,816	Otumoetai Hockey Club Inc	\$8,724
New Plymouth District Council	\$25,000	Okato Playcentre	\$1,390	Otumoetai Primary School	\$9,417
New Plymouth Girls High School	\$6,000	Older Persons Community Centre Trust	\$5,000	Otumoetai Sports and Recreation Club Inc.	\$5,000
New Plymouth Group Riding for Disabled Inc	\$5,000	Omanu Beach Surf Life Saving Club Inc	\$17,025	Otumoetai Tennis Club Inc	\$20,000
New Plymouth Group Riding for Disabled Inc	\$2,500	One Taupo Trust	\$30,000	Owhata Primary School	\$3,277
New Plymouth Operatic Soc Inc	\$5,000	One Victoria Trust Board Inc	\$15,000	Pacific Island Community Tauranga Trust	\$15,000
New Plymouth Women's Centre	\$962	OneChance Charitable Trust	\$10,000	Paengaroa Community Hall Soc Inc	\$3,500
Nga Taiatea Wharekura	\$4,000	OPEYS All day Kindergarten	\$1,666	Paeroa L & P B M X Club Inc	\$9,000
Ngahinepouri Golf Club	\$10,000	Opotiki Bowling Club Inc	\$10,200	Papamoa Football Club Inc	\$8,991
Ngaroto Boating Club inc trading as Ngaroto Sailing Club	\$12,000	Opotiki Childrens Art House Trust	\$14,093	Papamoa Sikh Temple NZ Charitable Trust	\$20,000
Ngaruawahia High School	\$44,705	Opotiki District Council	\$22,000	Papamoa Sports Indoor Bowls Club Inc	\$3,924
Ngatuhua Lodge Outdoor Education Soc Inc	\$41,000	Opotiki Golf Club Inc	\$28,000	Papamoa Sports Tennis Club	\$7,800
Ngongotaha Sports and Community Assn Inc	\$2,347	Opotiki Heritage & Agricultural Museum Charitable Trust	\$17,500	Papamoa Surf Lifesaving Club Inc	\$20,000
No 3 District Fed of N Z Soccer Inc	\$120,000	Opus Orchestra Trust Inc	\$30,000	Papamoa Swimming Club Inc	\$15,000
Northern Daffodil Club Inc	\$3,600	Order of St John Central Region Trust Board	\$300,000	Parafed Bay of Plenty Inc	\$45,000
Northern Districts Cricket Assn Inc	\$250,000	Otumoetai Cadets Cricket Club	\$4,076	Parawai School	\$19,437
		Otumoetai Eels Rugby League Club Inc	\$7,000	Parent to Parent N Z Inc	\$25,000
		Otumoetai Football Club Inc	\$16,485	Paroa Rugby & Sports Club Inc	\$25,000



Te Tamawai Trust (Waterboy)

The Lion Foundation has provided resources for us to make life changing opportunities to tamariki and rangatahi through the Waikato. Without this support, these opportunities would not otherwise be available to these deserving kiwis. Thanks for partnering with us in creating Stronger People & Stronger Communities.

THE LION FOUNDATION



Waikato / BOP

Grants Distributed 1 April 2021 – 31 March 2022 (excluding grant refunds)
Grant Payment 14 April 2022 – refer Note 7 to Financial Statements

Peachgrove Intermediate School	\$10,000	Shama Hamilton Ethnic Womens Centre Trust	\$9,602	Taranaki Womens Refuge Inc	\$11,777
People Relying On People Inc	\$5,000	Silverdale Normal School	\$7,500	Tarawera High School	\$9,698
Performing Arts Charitable Trust	\$15,000	South Waikato Cricket Assn Inc	\$15,460	Tarawera High School	\$50,000
Performing Arts Community Trust	\$3,000	Southern United Rugby Football Club Inc	\$9,131	Tatuanui Tennis Club Inc	\$2,000
Perry Outdoor Education Trust	\$120,000	Southern United Rugby Football Club Inc	\$5,309	Taupiri Bowling Club Inc	\$6,693
Piako Gliding Club Inc	\$10,000	Southnet Sports Club Inc	\$5,000	Taupiri Rugby Football Club Inc	\$31,932
PIPS	\$3,700	Sport BOP Charitable Trust	\$180,000	Taupo Budget Advisory Service Inc	\$10,000
Port Ohope Yacht Club Inc	\$3,680	Sport Waikato	\$120,000	Taupo Concert Band Inc	\$5,320
Port Waikato School Camp Trust	\$20,000	Sports Opotiki Inc	\$45,000	Taupo Cricket Inc	\$12,927
Positive Women Inc	\$4,000	Sports Opotiki Inc	\$4,800	Taupo Golf Club Inc	\$20,000
Priority One Western B O P Inc	\$30,000	Spotswood College	\$4,521	Taupo Model Railway Club Inc	\$5,000
Project Kiwi Trust	\$2,566	Spotswood United Rugby Football & Sports Club Inc	\$10,689	Taupo Motor Cycle Club Inc	\$10,000
Prostate Cancer Foundation of N Z Inc	\$41,250	Squash Bay of Plenty Inc	\$20,000	Taupo Netball Centre Inc	\$12,000
Puketaha School	\$5,000	Squash Opotiki 2007 Club Inc	\$58,691	Taupo Rowing Club Inc	\$21,614
Pure Freestyle Community Foundation LTD	\$26,190	Squash Waikato Inc	\$15,000	Taupo School of Music	\$2,528
Putaruru Golf Club Inc	\$15,000	St John Te Whanau A Apanui	\$35,000	Taupo Tennis Inc	\$16,738
Putauaki Full Primary School	\$40,000	St Johns College Hamilton	\$10,000	Tauranga - B O P Petanque Assn Inc	\$1,245
Rangataua Sports & Cultural Club Inc	\$7,490	St Pauls Swimming Club Inc	\$5,334	Tauranga Badminton Club Inc	\$10,994
Rangers Netball Club	\$3,813	St Peters Care and Counselling Charitable Trust	\$10,000	Tauranga Boys College	\$50,000
Rangimarie Trust	\$20,000	STEAM-ED	\$13,333	Tauranga City AFC Inc	\$20,000
Rangiura Trust Board	\$9,000	Sunset Primary School	\$20,000	Tauranga City AFC Inc	\$15,000
Refugee Orientation Centre Trust	\$4,000	SuperGrans Western Bay of Plenty Charitable Trust	\$10,000	Tauranga City Basketball Assn Inc	\$60,000
Rerewhakaaitu Rodeo Association Inc	\$12,000	Sustainable Coastlines Charitable Trust	\$30,000	Tauranga Civic Choir Inc	\$4,208
Ride N Z's Cycling Festival Inc	\$50,000	Swim Rotorua Inc	\$16,320	Tauranga Croquet Club Inc	\$3,000
Rotokawa School	\$5,217	Swim Waikato Inc	\$50,000	Tauranga Environment Centre Charitable Trust	\$10,000
Rotorua Bike Festival Charitable Trust	\$12,000	Swimming Taranaki Inc	\$6,000	Tauranga Hockey Assn Inc	\$60,000
Rotorua Bowling Club Inc	\$2,000	T F K A - Fitzroy Kindergarten	\$3,600	Tauranga Indoor Bowls Assn Inc	\$4,747
Rotorua Community Hospice Trust	\$15,182	T F K A - Pukekura Free Kindergarten	\$3,600	Tauranga Jazz Soc Inc	\$25,000
Rotorua Community Youth Centre Trust	\$8,000	T R F K - Papamoa Coast Kindergarten	\$951	Tauranga Model Railway Club Inc	\$2,415
Rotorua Competitions Soc Inc	\$2,517	T R F K A - Katikati Kindergarten	\$8,700	Tauranga Motorcycle Club Inc	\$3,270
Rotorua Continuing Care Trust	\$5,000	T R F K A - Wairakei Kindergarten	\$1,970	Tauranga Netball Centre Inc	\$35,000
Rotorua Croquet Club Inc	\$1,725	Tahuna Golf Club Inc	\$30,000	Tauranga Primary School	\$7,500
Rotorua District Riding for the Disabled Assn Inc	\$5,582	Taranaki Badminton Assn Inc	\$3,000	Tauranga Regional Multicultural Council Inc	\$5,139
Rotorua Golf Club Inc	\$10,400	Taranaki Cricket Assn Inc	\$10,000	Tauranga Rowing Club Inc	\$7,875
Rotorua Hockey Assn Inc	\$15,000	Taranaki Disabilities Information Centre Trust	\$10,000	Tauranga Sport Fishing Club inc	\$100,000
Rotorua Hockey Assn Inc	\$6,000	Taranaki Garden Trust Inc	\$5,000	Tauranga Squash Rackets Club Inc	\$35,000
Rotorua Hospital Chaplaincy Trust	\$10,000	Taranaki Gardens Festival Charitable Trust Board	\$5,000	Tauranga Synchronised Swimming Club Inc	\$2,000
Rotorua Hospital Chaplaincy Trust	\$10,000	Taranaki Paraplegic and Physically Disabled Assc	\$10,091	Tauranga Water Polo Club Inc	\$4,320
Rotorua Indoor Bowls Assn Inc	\$3,000	Taranaki Rugby Football Union Inc	\$25,000	Tauranga Woodcrafters Guild Inc	\$8,997
Rotorua Lakes Council	\$25,000	Taranaki Sports Trust	\$25,000	Tauranga Yacht & Power Boat Club Inc	\$18,471
Royal N Z Plunket - Waikato	\$11,000	Taranaki Tennis Assc Inc	\$5,000	Te Aroha & District Health Services Charitable Trust	\$18,685
Royal N Z Plunket Trust - Rotorua	\$9,000	Taranaki Toy Library Trust Inc	\$2,000	Te Aroha A P & H Assn	\$1,375
Royal N Z Plunket Trust - Taupo	\$8,000			Te Aroha Croquet Club Inc	\$3,000
S A N Z - Waikato Scout & Guide Gang Show	\$2,500			Te Aroha Indoor Basketball Assn	\$70,000
S I L C Charitable Trust	\$20,000			Te Awa River Ride Charitable Trust	\$80,000
Sewing for Success	\$2,000				

THE LION FOUNDATION



Waikato / BOP

Grants Distributed 1 April 2021 – 31 March 2022 (excluding grant refunds)
Grant Payment 14 April 2022 – refer Note 7 to Financial Statements

Te Awamutu B M X Club	\$3,500
Te Awamutu Rugby Sports & Recreation Club Inc	\$3,975
Te Kura Kaupapa Maori o Huringaterangi	\$5,556
Te Kura Kaupapa Maori O Waioweka	\$20,000
Te Kura O Torere	\$40,000
Te Parahia Trust	\$10,000
Te Puke Club Inc - Bowling	\$3,292
Te Puke Cricket Club Inc	\$14,150
Te Puke GymSport Inc	\$23,667
Te Puke Lawn Tennis Club Inc	\$25,000
Te Puke Sports & Recreation Club Inc	\$60,244
Te Puke Toy Library Inc	\$7,800
Te Puke United Football Club Inc	\$2,379
Te Puna Tennis Club	\$5,629
Te Ranga School	\$10,000
Te Rapa Rugby Club Inc	\$12,771
Te Rapa Squash Club Inc	\$3,600
Te Tamawai Trust	\$90,000
Te Whare Toi O Ngaruawahia - Twin Rivers Community Centre Inc	\$35,000
Tennis Western B O P Inc	\$12,160
Thames Cricket Club Inc	\$18,874
Thames Golf Club Inc	\$25,000
Thames Mountain Bike Club Inc.	\$15,000
Thames Museum Society Inc	\$1,743
Thames Squash Rackets Club Inc	\$15,000
Thames Tennis Club Inc	\$6,300
Thames Valley Basketball Assn Inc	\$11,800
Thames Valley Netball Inc	\$1,900
The Friends of Rotorua Museum of Art and History	\$2,000
Theatre Whakatane	\$19,830
Thornton School	\$2,610
Thornton School	\$21,065
Triathlon N Z Inc	\$30,000
Triathlon Tauranga Inc	\$5,406
Trident High School	\$2,039
True Colours Children's Health Trust	\$20,000
Tui Park Bowling Club Inc	\$17,500
Tukapa Rugby & Sports Club Inc	\$4,500
Turn and Gymnastic Circle	\$3,000
Turua School	\$10,000
United Matamata Sports Inc	\$18,260
United Matamata Sports Inc	\$30,000
University of Waikato Rugby Club Inc	\$5,000
Val Deakin Dance Theatre Trust	\$2,633
Vertical Horizon Camp	\$10,000

Volleyball Bay of Plenty Inc	\$1,800
Volunteer Western Bay of Plenty	\$15,000
Waiapu Anglican Care - Otumoetai Toy Library	\$1,408
Waihi Beach School	\$10,000
Waihi Beach Tennis Club	\$7,000
Waihi Inline Hockey Club Inc	\$9,936
Waihi LandSAR	\$30,000
Waihi Swimming Club	\$5,047
Waikato Badminton Assn Inc	\$25,000
Waikato Basketball Council Inc	\$50,000
Waikato Bay of Plenty Division Cancer Soc of N Z Inc	\$40,000
Waikato Billiards & Snooker Assn Inc	\$5,000
Waikato Clay Target Club Inc	\$10,000
Waikato Community Hospice Trust	\$20,000
Waikato Contemporary Dance Projects Trust	\$2,500
Waikato Country Music Assn Inc	\$3,000
Waikato Diocesan School Rowing Club Inc	\$7,401
Waikato Family Centre Trust	\$15,000
Waikato Hockey Assn Inc	\$50,000
Waikato Hockey Charitable Trust	\$10,000
Waikato Institute for Leisure & Sport Studies	\$50,000
Waikato Paraplegic and Physically Disabled Assn Inc	\$60,000
Waikato Punjabi Badminton Club Inc	\$4,000
Waikato Region B M X Assn Inc	\$10,000
Waikato Regional Volleyball Assn Inc	\$10,000
Waikato Rocks Trust	\$10,000
Waikato Soc of Arts Inc	\$6,789
Waikato Tennis Trust inc	\$10,000
Waipuna Football Club Inc	\$7,641
Waipuna Football Club Inc	\$2,277
Walsh Aviation Support Society Inc	\$15,000

Walton Golf Club Inc	\$20,000
Wanderers Sports Club Hamilton Inc	\$24,585
We Love Dogs Charitable Trust	\$7,980
Western Bay of Plenty District Council	\$190,000
Western Heights High School	\$4,228
Western Heights High School	\$3,863
Western United Assn Football Club	\$7,500
Whakamaru School	\$25,000
Whakatane Amateur Swimming Club Inc	\$20,000
Whakatane Badminton Club Inc	\$6,152
Whakatane Croquet Club Inc	\$25,000
Whakatane District Council	\$200,000
Whakatane District Neighbourhood Support Trust	\$15,000
Whakatane High School	\$9,930
Whakatane Intermediate School	\$60,000
Whakatane Kiwi Trust	\$17,560
Whakatane Squash Rackets Club Inc	\$15,000
Whangamata Combined Sports Centre Inc	\$10,000
Whangamata Golf Club Inc	\$25,000
Whangamata Rugby & Sports Club Inc	\$45,000
Whangamata Summer Festival Inc	\$5,006
Whangamata Summer Festival Inc	\$5,000
Whangamata Surf Life Saving Club Inc	\$20,000
Whitikahu School	\$3,552
WOMAD N Z Charitable Trust Board	\$20,000
Woodlands School	\$17,143
Woodleigh Sports & Social Club Inc	\$2,000
Youth Encounter Ministries Trust	\$10,000

\$9,864,214

Grant Payment 14 April 2022

YSAR Trust	\$20,000
------------	----------

\$20,000



Waikato Paraplegic and Physically Disabled Assn Inc

The grant from Lion Foundation is our lifeline for our members to be able to participate in their chosen sport. The opportunities for disabled people to participate in any sport are limited so to be able to offer a venue to train, coaching support and equipment, is invaluable to our members and their families.

THE LION FOUNDATION

Central

Grants Distributed 1 April 2021 – 31 March 2022 (excluding grant refunds)
Grant Payment 14 April 2022 – refer Note 7 to Financial Statements



Age Concern (Horowhenua) Inc	\$12,130	Cancer Soc of N Z Inc Wellington Division Inc	\$14,600	Dress for Success Wellington Inc	\$20,000
Age Concern Hawkes Bay Inc	\$36,500	Cancer Soc of N Z Manawatu Centre Inc	\$6,250	Duke of Edinburghs International Award Aotearoa NZ Hillary Award	\$5,000
Age Concern Kapiti Coast Inc	\$5,000	CanSurvive Dragon Boat Team Inc	\$9,710	Eastern Suburbs Cricket Club Inc	\$7,500
Age Concern N Z Palmerston North & Districts Branch Inc	\$4,319	Capital BMX Club Inc	\$7,250	English Language Partners Horowhenua Kapiti Inc	\$1,880
Age Concern Wellington Inc	\$6,271	Capital Football Inc	\$20,000	Eskview And Districts Rugby Football Club Inc	\$5,000
Age Concern Whanganui Inc	\$8,000	Capital Gymnastic Club Inc	\$8,325	Eventing Wairarapa	\$1,756
All Kiwi Sports Club Inc	\$10,000	Capital Seniors Inc	\$2,713	Fairhaven School (Napier)	\$3,213
Alliance Francaise de Palmerston North Inc	\$6,000	Capital Swim Club Inc	\$8,000	Family Finances Service Trust – Upper Hutt	\$10,000
Alzheimers Soc Manawatu Inc	\$30,000	Capital Zone Basketball Trust	\$50,000	Family Space Charitable Trust	\$5,728
Alzheimers Wanganui Inc	\$7,000	Cardinal McKeefry School (Wilton)	\$5,000	Family Support Services Whanganui Trust	\$35,000
Aramoho Whanganui Rowing Club Inc	\$10,680	Carncot Independent School	\$8,000	Featherston Booktown Trust	\$40,000
Arohanui Hospice Service Trust	\$26,000	Carterton Rugby Football Club Inc	\$16,000	Featherston Hockey Club Inc	\$1,000
Art Deco Trust Inc	\$70,000	Catholic Parish of Hastings - Te Parihi Katorika Ki Heretaunga (Thermals for Needy Children)	\$5,000	Featherston Junior Football Club Inc	\$8,000
Art Hawkes Bay Inc	\$757	CCS Disability Action (Wellington Branch) Inc	\$3,300	Featherston United Assn Football Club	\$1,000
Ashurst Pohangina Squash Club	\$4,500	CCS Disability Action Manawatu / Horowhenua Inc	\$4,500	Freedom Living Charitable Trust	\$5,000
Asthma & Respiratory Hawkes Bay Services Trust	\$35,000	CCS Disability Action Tairāwhiti Hawkes Bay Inc	\$3,680	Freyberg Old Boys Rugby Football Club Inc	\$8,000
Athletics Wellington Inc	\$9,000	CCS Disability Action Wairarapa Inc	\$4,000	GOYANZ Inc	\$20,000
Aubyn Live Theatre Inc	\$3,892	CCS Disability Action Whanganui Inc	\$5,000	Graeme Dingle Foundation Wellington	\$10,000
Awapuni School (Palmerston North)	\$10,000	Central Squash Assn Inc	\$3,000	Gymsports N Z Inc	\$3,481
Backline Charitable Trust	\$7,000	Challenge 2000 Trust	\$15,000	H P A - Belmont Playcentre	\$900
Badminton Wellington Inc	\$25,000	Circa Theatre Inc	\$58,000	Hakeke Street Community Centre	\$4,000
Basketball Hawkes Bay Inc	\$10,000	Citizens Advice Bureau Hastings Inc	\$4,000	Harbour City Gymsports Inc	\$4,086
BATS Theatre Ltd	\$5,000	Citizens Advice Bureau Inc Whanganui	\$5,000	Hastings Art and Culture Trust	\$15,600
Bay City Rollers Inc	\$2,000	Citizens Advice Bureau Napier Inc	\$5,167	Hastings Art and Culture Trust	\$8,000
Bay Independent Hockey Club Inc	\$3,000	City Gallery Wellington Foundation	\$10,000	Hastings Athletic Club Inc	\$15,000
Berhampore School	\$6,000	City Mission Palmerston North	\$15,000	Hastings Badminton Club Inc	\$1,800
Big Brothers Big Sisters Hawkes Bay	\$28,320	Coasters Musical Theatre Inc	\$5,000	Hastings Golf Club Inc	\$15,000
Bike Manawatu Inc	\$5,790	College Old Boys Rugby Football Club Inc	\$15,000	Hastings High School Old Girls Netball Club	\$9,000
Birthingright (HB) Child & Family Care Trust	\$10,000	College Sport Wellington Inc	\$10,000	Hastings Intermediate School	\$5,000
Bledisloe School	\$10,000	Community Arts Palmerston North	\$8,000	Hastings Tennis & Squash Club Inc	\$15,000
Bowls Manawatu Inc	\$15,000	Community House Whanganui Assn Inc	\$13,000	Havelock North Bridge Club Inc	\$7,000
Bowls Napier Inc	\$5,000	Cornwall Cricket Club (Hastings) Inc	\$6,750	Havelock North Intermediate School	\$5,000
Bowls Omarunui Inc	\$15,000	Creative Capital Arts Trust	\$100,000	Havelock North Wanderers Assn Football Club	\$10,000
Bowls Palmerston North Inc	\$15,000	Cricket Wellington Inc	\$45,000	Hawkes Bay Agricultural & Pastoral Soc Inc	\$19,600
Bowls Wellington Inc	\$5,000	Dalefield Hockey Club Inc	\$1,200	Hawkes Bay BMX Club Inc	\$20,000
Brain Injury Assn (Wellington) Inc	\$10,000	Diabetes N Z Wellington Inc	\$5,000	Hawkes Bay Caledonian Pipe Band Inc	\$2,080
Brain Injury Assn Central Districts Inc	\$10,000	Diabetes Youth (Wellington) Inc	\$5,000	Hawkes Bay Canoe Polo Assn Inc	\$20,000
Brain Injury Assn Hawkes Bay Inc	\$6,000	Diamond Way Buddhist Trust (Wellington Group)	\$5,000	Hawkes Bay Community Fitness Centre Trust	\$30,000
Brooklyn Northern United Assn Football Club Inc	\$5,000	Digits Charitable Trust	\$5,000	Hawkes Bay Equestrian Park Inc	\$2,000
Burlington Marching Team	\$3,000	Dominican Sisters of Wanganui	\$5,000	Hawkes Bay Hockey Assn Inc	\$15,000
Bush Childrens Day Trust	\$4,900				
C C S Disability Action Inc	\$20,000				
Cancer Soc of N Z Hawkes Bay Centre Inc	\$2,500				

THE LION FOUNDATION

Central

Grants Distributed 1 April 2021 – 31 March 2022 (excluding grant refunds)
Grant Payment 14 April 2022 – refer Note 7 to Financial Statements



Hawkes Bay Indoor Cricket Club Inc	\$5,000	KYS One Stop Shop Trust	\$10,000	N Z P F - Totara Park Playcentre	\$2,000
Hawkes Bay Mens Evergreen Softball Club Inc	\$2,500	La Leche League N Z Inc	\$15,000	N Z Universities and Tertiary Students Rugby League Council Inc	\$2,132
Hawkes Bay Motorcycle Club Inc	\$7,000	Learning and Growing Together Trust	\$14,976	Napier Aquahawks Swim Club Inc	\$3,835
Hawkes Bay Multiple Sclerosis Soc Inc	\$19,440	Legacy Centre	\$50,000	Napier Athletic Club Inc	\$2,700
Hawkes Bay Orchestra	\$4,000	Life Education Trust Hawkes Bay	\$10,000	Napier City Rovers A F C Inc	\$4,000
Hawkes Bay Polo Club Inc	\$15,000	Life Education Trust Kapiti Horowhenua	\$10,000	Napier Civic Choir Inc	\$5,000
Hawkes Bay Rowing Club Inc	\$48,529	Life Education Trust Manawatu	\$5,476	Napier Civic Choir Inc	\$8,000
Hawkes Bay Rugby Football Union Inc	\$50,000	Life to the Max Trust	\$3,000	Napier Community Child Care Centre	\$25,000
Hawkes Bay Squash Rackets Club Inc	\$5,000	Linden Singers of Hawkes Bay Inc	\$3,000	Napier Family Centre Inc	\$10,000
Hawkes Bay Volunteer Coastguard Inc	\$8,496	Lindisfarne College	\$1,435	Napier Girls High School	\$5,000
Hearing Assn Napier Branch Inc	\$5,175	Lindisfarne College	\$2,000	Napier Group Riding for the Disabled Assn Inc	\$15,000
Henwood Trust	\$30,000	Mahora School	\$4,000	Napier Intermediate School	\$6,000
Heretaunga Croquet Club Inc	\$4,000	Manawatu Access Radio Charitable Trust	\$10,000	Napier Old Boys Marist Cricket Club Inc	\$1,800
Heretaunga Sundevils Swim Team Inc	\$8,000	Manawatu Badminton Assn Inc	\$35,000	Napier Operatic Soc Inc	\$10,000
Heretaunga Womens Centre Inc	\$8,000	Manawatu Concert Band Inc	\$3,700	Napier Repertory Players Inc	\$5,000
Hockey Manawatu Inc	\$30,000	Manawatu Cricket Assn Inc	\$30,000	Napier Sailing Club Inc	\$5,000
Horizons Basketball Trust	\$6,000	Manawatu Gymsports Inc	\$8,000	Napier Technical Old Boys Cricket Club Inc	\$6,000
Horowhenua Kapiti Cricket Assn Inc	\$10,000	Manawatu Home Budgeting Service Inc	\$10,000	Napier Weavers Inc	\$964
Horowhenua Kapiti Rugby Football Union	\$6,000	Manawatu Horowhenua and Tararua Diabetes Trust	\$20,000	Netball Hutt Valley Centre Inc	\$15,000
Hutt City Brass Inc	\$1,700	Manawatu Lesbian & Gay Rights Assn Inc	\$3,350	Netball Manawatu Centre Inc	\$30,000
Hutt International Boys School	\$4,000	Manawatu Multicultural Council Inc.	\$9,000	Netball Wairarapa Inc	\$6,000
Hutt Valley Softball Assn Inc	\$5,000	Manawatu Performing Arts Competition Soc Inc	\$6,000	Netball Wellington Centre Inc	\$10,000
Hutt Valley Sports Awards Inc	\$10,000	Manawatu Rugby Football Union Inc	\$60,000	Newlands Intermediate School	\$2,900
iHow Charitable Trust	\$10,000	Manawatu Scottish Pipe Band Inc	\$9,000	Ngata Memorial College	\$17,000
Inspire in Education Ltd	\$5,000	Manawatu Scottish Soc of N Z Inc	\$3,000	No 4 District Fed of N Z Football T/A Central Football Inc	\$15,000
Kaibosh	\$43,500	Manawatu Volleyball Club Inc	\$20,000	Normandale School	\$5,500
Kaitoke School (Wanganui)	\$3,245	Manarui Surf and Life Saving Club Inc	\$10,000	Normandale School	\$336
Kapiti Basketball Assn Inc	\$3,900	Marching Hawkes Bay Assn Inc	\$3,000	Northern United Hockey Club	\$3,609
Kapiti BMX Club Inc	\$10,000	Marewa Sports Club Inc	\$2,013	Ocean Beach Kiwi Surf Life Saving Club Inc	\$8,000
Kapiti Catholic Youth Trust Board	\$10,000	Marist Club PN Inc	\$12,000	OnBoard Skate Inc	\$20,000
Kapiti Coast United Sports Club Inc	\$9,000	Massey University Football Club Inc	\$10,000	Onslow Cricket Club Inc	\$5,000
Kapiti Coast Workers Educational Association Inc	\$1,850	Meeanee Badminton Club Inc	\$900	P N HSOB Junior Rugby Club Inc	\$5,800
Kapiti Playhouse Inc	\$1,500	MentorEd Charitable Trust	\$15,000	Palmerston North City Council	\$11,552
Kapiti Softball Club Inc	\$10,000	Mid Central Zone of N Z R L Inc	\$20,000	Palmerston North Dance Assn Inc	\$10,000
Kapiti Toy Library Inc	\$5,000	Milson School	\$2,377	Palmerston North Jets Basketball Inc	\$30,000
Kapiti Youth Employment Foundation	\$900	Miramar Rangers Assn Football Club Inc	\$25,000	Palmerston North Methodist Social Services Trust	\$2,900
Karori Hockey Club Inc	\$3,000	Music and Memory Charitable Trust	\$2,794	Palmerston North Operatic Soc Inc	\$18,915
Karori Junior Cricket Club	\$5,000	Music Festivals and Events NZ Board	\$1,850	Palmerston North Parents Centre	\$4,600
Karori Playcentre	\$3,462	N Z Choral Fed Inc Wellington Region	\$4,000	Palmerston North Squash Club Inc	\$55,000
Karuwh Mission Trust	\$6,000	N Z Family and Foster Care Fed Inc	\$30,000	Palmerston North Street Van Inc	\$4,000
KidsCan Charitable Trust	\$25,000	N Z Festival	\$100,000	Paraparaumu Beach Bowling Club Inc	\$8,000
Kidzstuff Theatre for Children Inc	\$5,000	N Z P A - Lower Hutt Playcentre	\$4,315	Paraparaumu Beach Golf Club Inc	\$10,000
Kopane School	\$10,000	N Z P F - Taradale Playcentre	\$9,000	Paraparaumu College	\$12,000
Koriniti Marae Maori Reservation Trust	\$30,000				
Kuranui College	\$11,435				

THE LION FOUNDATION

Central

Grants Distributed 1 April 2021 – 31 March 2022 (excluding grant refunds)
Grant Payment 14 April 2022 – refer Note 7 to Financial Statements



Paraparaumu School	\$17,200	Special Olympics Hawkes Bay	\$10,000	Upper Hutt Community Youth Trust Board of Trustees	\$8,556
Parent Help Wellington Inc	\$10,000	Special Olympics Kapiti	\$7,000	Upper Hutt Maidstone United Netball Club Inc	\$10,000
Parkvale School	\$5,000	Special Olympics Manawatu	\$25,728	Upper Hutt United Cricket Club Inc	\$15,000
Performance Arcade Trust	\$2,000	Special Olympics NZ - Lower North Island Regional Council	\$20,000	Victoria University of Wellington Cricket Club Inc	\$5,000
Performing Arts Competitions Assn of N Z Inc	\$15,000	SPELADD N Z Inc	\$7,000	Victoria University of Wellington Foundation	\$6,000
Perinatal Mental Health N Z	\$3,592	Sportslink Charitable Trust Board	\$4,800	Vulnerable Support Charitable Trust	\$10,000
Pinehaven Tennis Club Inc	\$5,000	Sri Lanka Assn of N Z Inc	\$2,000	W M F K A - Doris Nicholson Kindergarten	\$1,780
Piping & Dancing Assn of N Z Inc - Wellington Centre	\$4,675	St Johns College (Hastings)	\$9,200	W M F K A - Paraparaumu Beach Kindergarten	\$3,950
PN Marist Football Club Inc	\$20,000	St Marys School Hastings	\$4,000	W M F K A - Raumati South Kindergarten	\$1,975
Poneke Football Club Inc	\$5,000	St Peters College - Palmerston North	\$25,000	W M F K A - South End Kindergarten	\$1,700
Porirua Living Without Violence - Te Noho Riri Kore Inc	\$5,000	St Teresa's School (Karori)	\$6,000	W M F K A - Carterton Kindergarten	\$1,398
Port Hill Junior Football Club	\$2,548	Stagecraft Theatre Inc	\$5,492	Waikanae Beach Tennis Club	\$5,000
Port Hill United Football Club Inc	\$2,700	STAROS Affected by Suicide Support Trust	\$5,000	Waimarama Surf Lifesaving Club Inc	\$6,000
Presbyterian Support East Coast	\$8,000	Stroke Foundation Central Region Inc	\$24,576	Wairarapa Mathematical Assn Inc	\$1,846
Primary Sport Wellington Inc	\$13,000	Super Sixes Charitable Trust	\$245	Wairarapa Pony Club Inc	\$679
R N Z S P C A - Palmerston North Centre	\$8,000	Supporting Families in Mental Illness Manawatu Inc	\$25,000	Wairarapa Tennis Assn	\$2,780
Rangitikei Golf Club Inc	\$3,133	Surf Lifesaving Charitable Trust	\$40,000	Wanganui A & P Assn Inc	\$10,000
Rangitikei Voluntary Rural Fire Force	\$35,000	Swimming Wellington Inc	\$20,000	Wanganui Competitions Soc Inc	\$15,000
Raumati Beach School	\$1,700	Talk Link Trust	\$18,252	Wanganui Croquet Club Inc	\$5,328
Raumati South School	\$8,000	Tamatea High School	\$5,650	Wanganui Group of the Riding for the Disabled Assn Inc	\$34,000
Read NZ Te Pou Muramura Inc	\$10,000	Tamatea Rugby League Club Inc	\$3,519	Wanganui Sports Foundation	\$50,000
Red Sox Sports Club Inc	\$15,000	Tamatea School	\$25,000	Waterside Karori Assn Football Club Inc	\$30,000
Regional Indoor Sports & Events Centre Inc	\$25,000	Taradale Cricket Club Inc	\$6,000	Wellington Basketball Assn Inc	\$30,000
Richter City Roller Derby	\$2,900	Taradale Netball Club Inc	\$7,285	Wellington City Mission (Anglican) Trust Board	\$45,000
Riding for the Disabled Assn Hutt Valley Group Inc	\$7,240	Te Ahu A Turanga I Mua Marae	\$9,115	Wellington College	\$15,000
Rimutaka Inline Hockey Club Inc	\$5,000	Te Aratika Academy	\$14,000	Wellington College Old Boys & Victoria University of Wellington RFC Inc	\$30,000
RiverCity Boxing Club Inc	\$6,000	Te Aute College	\$7,300	Wellington Diving Club Inc	\$8,000
Roseneath Primary School	\$4,800	Te H o Hine-ahu-one Palmerston North Womens Health Collective Inc	\$8,000	Wellington Floorball Club Inc	\$5,000
Roslyn School	\$8,000	Te Ha Ora: The Asthma and Respiratory Foundation Charitable Trust	\$15,000	Wellington Football Club Inc	\$10,000
Rotary Club of Taradale Charitable Trust	\$3,300	Te Kura o PakiPaki	\$15,000	Wellington Girls College	\$5,000
Royal N Z Armoured Corps History Project Charitable Trust (RNZAC HPCT)	\$10,000	Te Manawa Museums Trust	\$10,000	Wellington Harrier Athletic Club Inc	\$6,000
Royal Port Nicholson Yacht Club Inc	\$19,212	Te Whakaritorito Trust	\$18,000	Wellington Heat Basketball Inc	\$4,000
Rugby League Hawkes Bay Inc	\$15,600	Tennis Central Region Inc	\$15,000	Wellington Hockey Assn Inc	\$35,000
S A N Z - Brooklyn Scout Group	\$5,000	Tennis Eastern Inc	\$7,000	Wellington Hospitals Foundation	\$40,000
S A N Z - Camp Kilsby	\$4,500	Terrace End Playcentre	\$6,000	Wellington Municipal Croquet Club (Inc)	\$3,500
Sacred Heart College (Napier)	\$20,000	The 4 A Better City Trust	\$8,000	Wellington Mutamizh Sangam Inc	\$3,000
Sailability Hawkes Bay Trust Inc	\$2,000	The Rare Disorders New Zealand Trust	\$15,000	Wellington Opera Trust	\$10,000
Sailability Wellington Trust	\$3,099	Thorndon Club Inc	\$5,000	Wellington Regional Sports Education Trust	\$70,000
Samaritans Manawatu Inc	\$8,000	Tikitiki School	\$20,000	Wellington Riding for the Disabled Assn Inc	\$9,450
Samaritans N Z Inc	\$8,670	Trentham School	\$10,000		
Samaritans of Wellington Inc	\$3,131	Trentham Sports Centre Trust	\$8,000		
Silverstream School	\$9,300	United Cricket Club Inc	\$6,000		
South End School	\$13,346	Upper Hutt Bowling Club Inc	\$5,000		
		Upper Hutt Community Childrens Centre Trust	\$9,967		

THE LION FOUNDATION



Central

Grants Distributed 1 April 2021 – 31 March 2022 (excluding grant refunds)
Grant Payment 14 April 2022 – refer Note 7 to Financial Statements

Wellington Rowing Association Inc	\$3,000
Wellington Rugby Football Union Inc	\$50,000
Wellington Rugby League Zone of N Z R L Inc	\$4,000
Wellington Scottish Athletics Club Inc	\$3,975
Wellington Softball Assn Inc	\$3,600
Wellington South Fencing Club	\$2,500
Wellington Speedway Soc Inc	\$3,000
Wellington Symphonic Bands Inc	\$1,000
Wellington Tennis Inc	\$15,000
Wellington Touch Assn Inc	\$2,000
Wellington Treasure Trust	\$8,000
Wellington Veterans Tennis Club Inc	\$2,500
Wellington Volunteer Centre	\$10,000
Wellington Womens Refuge Group Inc	\$10,400
Western Rangers Football Assn Inc	\$8,753
Western Rangers Football Assn Inc	\$4,000
Whakarongo School	\$33,000
Whanganui Collegiate School	\$2,415
Whanganui Cricket Assn Inc	\$20,000
Whanganui Intermediate School	\$5,000
Whanganui Literary Festival Trust	\$7,577
Whanganui Montessori Preschool	\$5,345

Whanganui Musicians Club Inc	\$5,000
Whanganui Squash Rackets Club Inc	\$10,000
Whanganui Volunteer Centre Trust	\$10,000
Whirinaki Whare Taonga	\$15,000
Worser Bay Life Saving Club Inc	\$11,000
Worser Bay School	\$5,751
Writers Plot Readers Read Inc Soc	\$5,000
Younger Onset Dementia Aotearoa Trust	\$4,000
Youthline Central North Island Inc	\$50,000
Youthline Wellington Inc	\$10,000

\$4,794,522

Grant Payment 14 April 2022

Age Concern Havelock North Inc	\$10,000
Age Concern Napier Inc	\$7,000
Amputee Soc of the Greater Wellington Region Inc	\$5,980
Aramoho Bowling Club Inc	\$5,000
Birthingright Wanganui Inc	\$6,000
CCS Disability Action (Wellington Branch) Inc	\$5,000
Central Districts Cricket Assn Inc	\$90,000

Citizens Advice Bureau Hastings Inc	\$5,000
Dalefield Hockey Club Inc	\$6,788
Foto Iwi	\$5,000
Freyberg Old Boys Rugby Football Club Inc	\$10,000
Graeme Dingle Foundation Hawkes Bay	\$15,000
Havelock North Primary School	\$10,000
Hawkes Bay Badminton Assn Inc	\$6,000
Hawkes Bay Community Fitness Centre Trust	\$59,000
Hawkes Bay Cricket Assn Inc	\$15,000
Hawkes Bay Regional Sports Park Trust	\$100,000
Hawkes Bay Rescue Helicopter Trust	\$20,000
Hearing Assn Wanganui Branch Inc	\$5,000
Hibernian Assn Football Club Inc	\$5,000
House of Grace Trust Inc	\$10,000
Hundred Acre Preschool Inc	\$5,000
Karori Anglican Churches	\$30,000
KartSport Manawatu Inc	\$5,000
Legacy Housing	\$34,774
Manawatu Deaf Soc Inc	\$4,000
Marist Football Club Inc	\$1,520
Mary Potter Hospice Foundation Inc	\$60,000
Orpheus Choir of Wellington Inc	\$3,000
Palmerston North End A F C Inc	\$5,000
Rangitikei Squash Rackets Club Inc	\$1,363
Regional Indoor Sports & Events Centre Inc	\$100,000
Royal N Z Foundation of the Blind	\$15,000
Tamatea Rugby & Sports Club Inc	\$5,000
Tararua Sports Club Inc	\$4,543
Upper Hutt Bowling Club Inc	\$5,000
Volleyball Hawkes Bay Inc	\$10,000
Wanganui East Bowling Club Inc	\$10,000
Wanganui Roller Sports Inc	\$2,500
Wellington Collegians Cricket Club Inc	\$5,000
Wellington Japan Festival Trust	\$10,000
Wellington Region Hockey Stadium Trust	\$50,000
Wellington Rowing Club Inc	\$10,000
Wellington Zoo Trust	\$125,000
Westshore Surf Life Saving Club Inc	\$4,608
Whanganui Repertory Theatre Inc	\$2,500
Wilton Bowling Club Inc	\$10,000
Youthline Central North Island Inc	\$25,000

\$944,576



Cricket Wellington

Lion Foundation is a significant driving force behind Cricket Wellington and the growth of our game regionally and Cricket Wellington acknowledges this important impact that this has on our participants and communities. Through a range of initiatives, we intend to continue to ensure our clubs, community groups, coaches, officials, volunteers, fans, and participants are provided with an outstanding cricket experience.

THE LION FOUNDATION

Southern

Grants Distributed 1 April 2021 – 31 March 2022 (excluding grant refunds)
Grant Payment 14 April 2022 – refer Note 7 to Financial Statements



24-7 Unite	\$2,000	Bowls Dunedin Inc	\$10,000	Canterbury West Coast Sports Trust	\$20,000
ADARDS Otago Inc.	\$10,000	Bowls Tahunanui Inc	\$3,000	Carisbrook School	\$16,761
Adult Conductive Education Trust	\$1,800	Bradford School	\$4,000	Catholic Social Services Dunedin	\$8,000
Alhambra Union Rugby Football Club Inc	\$15,000	Brain Injury Assn Nelson Inc	\$15,652	Caversham Bowling Club Inc	\$8,000
Amputee Soc of Otago & Southland Inc	\$1,495	Bread of Life Trust	\$10,000	CCS Disability Action Canterbury West Coast Inc	\$6,000
Amputee Soc of Top of the South Inc	\$2,000	Bridge Valley Christian Trust	\$15,000	Celtic Cricket Club Inc - Timaru	\$4,548
Amputees Fed of N Z Inc	\$7,475	Bromley School	\$8,000	Challenge Wanaka Sports Trust	\$12,000
Andersons Bay Basketball Club Inc	\$8,000	Brooklyn Croquet Club Inc	\$5,000	Chisholm Park Golf Club Inc	\$12,000
Andersons Bay Basketball Club Inc	\$2,000	Buller Basketball Assn Inc	\$5,000	Cholmondeley Childrens Centre Inc	\$50,000
Andersons Bay Bowling Club Inc	\$1,500	Buller Rugby Union Inc	\$40,000	Christchurch Avon Athletic Club Inc	\$926
Anglican Family Care Centre Inc.	\$25,000	Burnside Bowling Club Inc	\$5,248	Christchurch Childrens Holiday Camps Trust	\$8,000
Annesbrook Community Trust	\$10,000	Burnside High School	\$5,000	Christchurch City Chorus of Sweet Adelines International Inc	\$6,000
Arapaoa Kiwi Trust	\$4,000	Burnside Park Tennis Club Inc	\$1,750	Christchurch Community House Te Whakaruru ki Otatahi Trust	\$3,760
Arawa Canoe Club Inc	\$4,000	Burnside Rowing Inc	\$10,000	Christchurch Competitions Soc Inc	\$3,662
Arawa Canoe Club Inc	\$5,000	Burnside Rugby Football Club Inc	\$20,581	Christchurch East School	\$1,000
Ariki (Dunedin) Amateur Athletic & Harrier Club Inc	\$2,300	Burnside Squash Rackets Club Inc	\$5,500	Christchurch Football Club Inc	\$10,000
Ashley Rugby Football Club Inc	\$3,811	Burwood Assn Football Club Inc	\$2,000	Christchurch Girls High School Hockey Club Inc	\$3,000
Ashley School	\$2,939	Business Trust Marlborough Inc.	\$5,000	Christchurch Group N Z Riding for the Disabled Assn Inc	\$3,000
Aspiring Gymsports Inc	\$15,000	C C S Disability Action Nelson Marlborough Inc	\$24,000	Christchurch High School Old Boys - Old Collegians Cricket Club Inc	\$5,000
Atawai Playcentre	\$8,000	C C S Disability Action Otago Inc	\$7,000	Christchurch Metropolitan Cricket Assn Inc	\$3,000
Athletic College Old Boys Cricket Club	\$5,000	C C S Disability Action Southland Inc	\$1,500	Christchurch Pistol Club Inc	\$5,000
Athletics Otago Inc	\$40,000	C W F K A - Kidsfirst Kindergarten Karoro	\$2,183	Christchurch School of Gymnastics Inc	\$4,000
Aviva (Incorporating Christchurch Women's Refuge) Charitable Trust	\$20,000	Cancer Soc of N Z - Otago & Southland Division Inc	\$9,000	Christchurch Speedway Assn Inc	\$3,000
Avon Hockey Club Inc	\$10,000	Cansail Charitable Trust	\$4,744	Christchurch Symphony Trust	\$10,000
Avon Hockey Club Inc	\$10,000	Canterbury Agricultural & Pastoral Assn	\$5,000	Christchurch Transitional Architecture Trust	\$3,500
Badminton Canterbury Inc	\$4,240	Canterbury Alpine Ice Skating Club Inc	\$8,000	Christchurch Transitional Architecture Trust	\$3,000
Banks Avenue School	\$5,000	Canterbury Asthma Soc Inc	\$15,000	Christchurch Yacht Club Inc	\$2,500
Basketball Development Nelson Trust	\$30,000	Canterbury Basketball Assn Inc	\$12,000	Citizens Advice Bureau Christchurch Area Inc	\$1,404
Basketball Otago Inc	\$45,000	Canterbury Brain Collective Ltd	\$20,000	Citizens Advice Bureau Dunedin Inc	\$6,000
Battered Women's Trust (Christchurch)	\$8,000	Canterbury Branch of the Muscular Dystrophy Assn of N Z Inc	\$8,000	Cobden Bowling Club Inc	\$3,000
Bayfield High School	\$10,000	Canterbury Brass Inc	\$2,826	Cobham Intermediate	\$8,000
Beachlands Speedway Inc	\$8,000	Canterbury Community Sailing Trust	\$5,000	Columba College	\$20,000
Belfast Sports & Community Centre Inc	\$7,392	Canterbury Country Cricket Assn Inc	\$10,000	Community Development Network Trust	\$6,000
Belfast Sports & Community Centre Inc	\$2,795	Canterbury Cricket Assn Inc	\$15,000	Community Wellbeing North Canterbury Trust	\$3,957
Big Brothers Big Sisters of Nelson-Tasman	\$10,000	Canterbury Cricket Trust	\$50,000	Conductive Education (Southern) Charitable Trust	\$10,000
Birthingright Canterbury Trust	\$2,500	Canterbury Men's Centre	\$5,000	Connect	\$8,000
Blenheim Bowling Club Inc	\$10,000	Canterbury Motorcycle Speedway Club Inc	\$3,421	Creative Kids Trust Board	\$10,000
Blenheim Swimming Club Inc	\$5,000	Canterbury Refugee Resettlement and Resource Centre Inc	\$20,000	Creative Trust	\$5,000
Bluff Oyster & Food Festival Charitable Trust	\$10,000	Canterbury Regional Basketball Foundation	\$10,000		
Bluff Rugby Football Club Inc.	\$5,000	Canterbury Rowing Assn Inc	\$8,500		
Bluff Yacht Club	\$8,250	Canterbury Rugby League Inc	\$4,000		
Board of the Dunedin Writers and Readers Festival	\$10,000	Canterbury Soc of Arts Charitable Trust	\$10,000		
Bone Marrow Cancer Trust Inc	\$40,000	Canterbury Water Ski Assn	\$5,000		

THE LION FOUNDATION

Southern

Grants Distributed 1 April 2021 – 31 March 2022 (excluding grant refunds)
Grant Payment 14 April 2022 – refer Note 7 to Financial Statements



Cultivate Christchurch Ltd	\$5,000	Fairhall School	\$1,740	Kaiapoi Croquet Club Inc	\$12,189
Cure Boating Club Inc	\$10,159	Forewell Wharariki HealthPost Nature Trust	\$20,000	Kaiapoi Promotion Assn Inc	\$20,000
Cust Community Swimming Pool	\$20,000	FC Twenty 11 Inc	\$3,500	Kaiapoi Rugby Football Club Inc.	\$5,252
Cycling Southland Inc	\$5,000	Ferrymead Bays Soccer Club Inc	\$4,000	Kaiata Community Centre Inc	\$3,397
D KI - Bayfield Kindergarten	\$2,242	Forbury Park Bowling Club Inc	\$15,000	Kaikorai Junior Cricket Club Inc	\$4,000
D KI - Mosgiel Central Kindergarten	\$1,000	Forbury Park Croquet Club Inc	\$1,127	Kaikorai Rugby Football Club Inc	\$10,000
D KI - Rachel Reynolds Kindergarten	\$3,130	Fraser Park Community Trust	\$50,000	Kaikorai Valley College	\$3,000
Dead End Derby Dolls Inc	\$2,010	Friends of Bullock Creek Inc	\$15,000	Kairoso Trust	\$4,801
Deaf Soc of Canterbury Inc	\$2,343	Friends of the Globe Theatre Inc	\$2,000	Kavanagh College	\$25,000
Delta Community Support Trust	\$10,000	Gleniti Playcentre	\$11,000	Kawatiiri Group Riding for the Disabled Inc.	\$2,000
Delta Rhythmic Gymnastics Club Inc	\$3,113	Golden Bay Tennis Club Inc	\$4,930	Kingslea School	\$7,988
Dementia Canterbury Charitable Trust	\$5,000	Golden Bay Work Centre Trust	\$3,600	Kiwi Rugby Football Club Inc	\$2,500
Dementia Waikato Charitable Trust	\$13,000	Golf Otago Inc	\$20,000	Korowai Youth Well-Being Trust	\$1,947
Diabetes Christchurch Inc	\$4,000	Good Bitches Trust	\$30,000	Kumara Racing Club Inc	\$3,000
Disability Information Service Inc	\$8,000	Graeme Dingle Foundation Canterbury	\$5,000	Lake Kanieri Yacht & Power Boat Club Inc	\$2,576
Disabled Persons Centre Trust	\$10,000	Graeme Dingle Foundation Marlborough	\$20,000	Lancaster Park Cricket Club Inc	\$4,000
Diving Otakou (2015) Inc	\$20,000	Graeme Dingle Foundation Southland	\$5,000	Leith Harrier & Athletic Club Inc	\$6,000
Dobson Reserve Board	\$5,000	Green Island Assn Football Club Inc	\$19,500	Life Education Trust - Canterbury	\$21,461
Dunedin (N Z) Masters Games Trust Inc	\$5,000	Green Island Cricket Club Inc	\$4,000	Life Education Trust - Canterbury	\$20,000
Dunedin Choral Soc Inc	\$5,000	Green Island Rugby Football Club Inc	\$45,000	Life Education Trust Coastal Otago	\$7,500
Dunedin City Jazz Orchestra Inc	\$1,949	Green Island School	\$2,500	Life Education Trust Heartland Otago/Southland	\$7,000
Dunedin City Petanque Inc	\$899	Green Lab	\$5,000	Life Education Trust Nelson / Tasman	\$20,000
Dunedin Community House Trust Inc	\$7,000	Grey District Council - Waitangi Day Community Celebration	\$948	Life Education Trust West Coast	\$20,000
Dunedin Community Transport Trust	\$347	Grey Power Otago Inc	\$1,166	Life Linc Nelson Inc	\$2,500
Dunedin Curtain Bank Trust	\$7,000	Greymouth Golf Club Inc	\$7,000	Life Matters Suicide Prevention Trust	\$28,243
Dunedin Fringe Arts Trust	\$5,000	Greymouth Hockey Club Inc	\$5,000	Linfield Cultural Recreational & Sports Club Inc	\$8,000
Dunedin Ice Skating Club Inc	\$4,364	Greymouth Jockey Club Inc	\$5,000	Linwood Rugby Club Inc	\$8,000
Dunedin Lawn Bowls Stadium Inc	\$6,685	Greymouth Marist Rugby Football Club Inc	\$6,545	Literacy Christchurch Inc	\$3,000
Dunedin Midwinter Celebrations	\$5,000	Habitat for Humanity Nelson Ltd	\$5,000	Luggate Albion Cricket Club Inc	\$10,000
Dunedin Poultry Pigeon & Cage Bird Club Inc	\$1,000	Haeata Community Campus	\$4,950	M E Information & Support Services (OTAGO AND SOUTHLAND) Inc	\$5,000
Dunedin Swim Coaching Board Inc	\$10,000	Hagley Golf Club Inc	\$2,500	M E/C F S Canterbury	\$3,000
Dunedin Tap Dancing Soc	\$654	Harbour Rugby Football Club Inc	\$18,697	Macandrew Bay Primary School	\$5,000
Dyspraxia Support Group of N Z Inc	\$1,360	Hiwa Navigation Ltd	\$34,423	Mainland North B M X Assn Inc	\$4,000
E S N Z Eventing Canterbury Inc	\$1,311	Hockey Marlborough Inc	\$15,000	Maitai School	\$5,600
Early Childhood Resource Centre Chch Inc	\$6,000	Hockey Marlborough Inc	\$10,000	Makura Croquet Club	\$3,999
East Christchurch Shirley Cricket Club Inc	\$3,960	Hokitika Axemens Club	\$3,400	Mandeville Sports Club	\$10,000
East Taieri Preschool Inc	\$6,475	Hokitika Bowling Club Inc.	\$1,481	Manu Ora Limited	\$2,700
Eastern States Speedway (1995) Inc	\$15,200	Hokitika Golf Club Inc	\$9,850	Marist Albion Netball Club Inc	\$1,000
Eclipse Under 12 Marching Team	\$547	Hokitika Rugby League Club Inc	\$8,000	Marist Rugby Football Club Nelson Inc	\$40,000
Eclipse Under 16 Marching Team	\$1,500	Homebuilders West Coast Trust	\$10,000	Marlborough Basketball Assn Inc	\$12,000
Ellesmere Rugby Sub Union Inc	\$5,500	Huia Rugby Football Club Inc	\$10,000	Marlborough Colleges Sailing Club	\$1,564
Elmwood Club	\$10,000	Inclusive Sport Trust	\$15,000	Marlborough Dance Development Trust	\$1,040
English Language Partners - Aoraki	\$3,000	Inspire Foundation Marlborough	\$20,000	Marlborough District Brass Band Inc	\$3,177
English Language Partners Christchurch	\$2,168	John Paul II High School	\$4,000	Marlborough Endurance & Trail Riding Club	\$2,000
Eyreton Pony Club Inc	\$4,000	Kahu Youth Trust	\$15,000		

THE LION FOUNDATION

Southern

Grants Distributed 1 April 2021 – 31 March 2022 (excluding grant refunds)
Grant Payment 14 April 2022 – refer Note 7 to Financial Statements



Marlborough Football Inc	\$4,000	Nelson Community Toy Library Inc	\$3,300	Otago Secondary Schools Rugby Council	\$25,000
Marlborough Football Inc	\$9,500	Nelson Cricket Assn Inc	\$10,000	Otago Secondary Schools Sports Assn Inc	\$5,705
Marlborough Girls College	\$8,000	Nelson District Kennel Assn Inc	\$960	Otago Softball Assn Inc	\$6,880
Marlborough Group N Z Riding for the Disabled Assn Inc	\$1,650	Nelson Festivals Trust	\$10,535	Otago Sports Car Club (Inc)	\$15,000
Marlborough Harness Racing Club Inc	\$10,000	Nelson Hockey Assn 1993 Inc	\$5,000	Otago Therapeutic Pool Trust	\$25,000
Marlborough Hospice Trust	\$12,629	Nelson Hockey Assn 1993 Inc	\$10,000	Otago Touch Assn Inc	\$10,000
Marlborough Kart Club Inc	\$881	Nelson Jazz Club Inc	\$2,560	Otago University Squash Racquets Club	\$4,520
Marlborough Multiple Sclerosis Soc Inc	\$2,336	Nelson Marlborough Rescue Helicopter Trust Inc	\$75,000	Otago Water Polo Club Inc	\$5,000
Marlborough Sounds Barbershop Chorus Inc	\$3,000	Nelson Netball Centre Inc	\$15,000	Otautahi Sports Assn Inc	\$4,000
Marlborough Squash Rackets Club Inc	\$5,000	Nelson Old Time Dance Club Inc	\$1,050	Outram Bowling Club Inc	\$3,000
Marlborough Tennis Assn Inc	\$10,000	Nelson Rowing Club Inc	\$18,150	Outward Bound Trust of N Z Inc	\$34,286
Marlborough Tennis Club Inc	\$5,000	Nelson Rugby Football Club Incorporated	\$20,475	Outward Bound Trust of N Z Inc	\$20,000
Maui Muay Thai Trust	\$7,000	Nelson Surf Lifesaving Club Inc	\$4,269	Outward Bound Trust of N Z Inc	\$40,000
Merivale Papanui Cricket Club Inc	\$2,000	Nelson Tasman Blind Lawn Bowls Assn	\$1,998	Papanui Toc H Athletic Club Inc	\$5,000
Metro Youth Trust	\$3,470	Nelson Tasman Youth Workers Collective Inc	\$2,127	Papatuanuku Independency Trust	\$3,252
Ministry of Inspiration	\$5,000	Netball South Zone Inc	\$30,000	Parafed Canterbury Inc	\$10,000
Moetapu Bay Community Jetty Inc	\$20,000	Netball Upper Clutha Inc	\$4,906	Parafed Otago Inc	\$8,000
Mornington Bowling Club Inc	\$50,000	New Brighton Power Boat Club Inc	\$2,236	Paroa Tennis Club Incorporated	\$5,000
Mornington Playcentre	\$4,083	New Brighton Rugby Football Club Inc	\$3,000	People First N Z Inc - Top of the South Region	\$3,000
Mornington Roslyn Lawn Tennis Club Inc	\$1,120	No 7 District Fed of N Z Soccer Inc	\$50,000	Perinatal Support Nelson Inc	\$6,500
Mornington Toy & Games Library Inc	\$3,550	No Child Left Inside Ltd	\$8,000	Picton Bowling Club Inc	\$7,200
Mosgiel Assn Football Club Inc	\$6,000	North Beach Surf Life Saving Club Inc	\$6,894	Picton Dawn Chorus Inc	\$8,000
Motor Neurone Disease Assn of N Z Inc	\$7,046	North Canterbury Basketball Assn	\$25,000	Picton Golf Club Inc	\$3,890
Motueka Squash Racquets Club Inc	\$8,000	North Canterbury Basketball Assn	\$7,000	Pioneer Netball Club Inc	\$961
Motueka Womens Support Link	\$5,000	North Canterbury Netball Centre Inc	\$947	Piping & Dancing Assn NZ Inc - Canterbury West Coast Centre	\$2,780
Moutere Hills Community Centre Inc	\$3,803	North Canterbury Sport and Recreation Trust	\$20,000	Piping and Dancing Assn of N Z Inc - Nelson/Marlborough Centre	\$5,000
Movement Art Practice Limited	\$1,240	North East Valley Bowling Club Inc	\$10,000	PIPS (Pregnancy Infancy Parenting Support)	\$5,500
Mt Aspiring College	\$5,000	North East Valley Cricket Club Inc	\$5,000	Pirates Squash Rackets Club Inc	\$25,000
Multiple Sclerosis & Parkinsons Soc of Canterbury Inc	\$10,000	Northern Assn Football Club Inc	\$7,000	Pleasant Point Yacht Club Inc	\$10,000
Murray McGeorge Toy Library Inc	\$1,535	Nova Montessori Centre Charitable Trust	\$2,000	Port Chalmers Bowling Club	\$1,752
Musselburgh School	\$10,500	Old Boys Te Kura Tennis Club Inc	\$20,000	Port Chalmers Golf Club	\$25,000
N D F K A - Golden Bay Kindergarten	\$11,831	Order of St John South Island Region Trust Board	\$372,971	Postnatal Depression Family/Whanau N Z Trust	\$5,000
N Z Choral Fed Inc	\$5,000	Otago Asthma Soc Inc	\$12,000	Presbyterian Support Otago Inc	\$50,000
N Z Conservation Trust Inc	\$5,000	Otago Chamber of Commerce	\$15,000	Profile Training Group Foundation	\$2,032
N Z P F - Macandrew Bay Playcentre	\$5,000	Otago Community Hospice Trust	\$60,000	Project Employment & Environmental Enhancement Programme Trust	\$7,230
N Z Riding Pony Soc Inc	\$2,769	Otago Cricket Assn Inc	\$60,000	Project Esther Trust Inc	\$4,000
Nature School Dunedin	\$3,000	Otago Girls High School	\$10,000	Queen Charlotte College	\$40,000
Nayland College	\$5,000	Otago Golf Club Inc	\$15,000	Queen's High School	\$9,000
Nelson Asthma Soc Inc	\$6,240	Otago Hockey Assn (1990) Inc	\$80,000	Queenstown Lakes District Council	\$5,000
Nelson Badminton Assn Inc	\$4,000	Otago Indoor Bowls Assn Inc	\$1,159	R A T E C Motorsport Inc	\$2,639
Nelson Bays Youth Teams Racing Assn Inc	\$4,000	Otago Mental Health Support Trust	\$750	R N Z S P C A - Greymouth Centre	\$10,000
Nelson City Brass Inc	\$17,000	Otago Rowing Club Inc	\$15,000		
Nelson Civic Choir Inc	\$2,680	Otago Rugby Football Union Inc	\$40,000		
Nelson College	\$10,000				

THE LION FOUNDATION



Southern

Grants Distributed 1 April 2021 – 31 March 2022 (excluding grant refunds)
Grant Payment 14 April 2022 – refer Note 7 to Financial Statements

R13 Youth Development Trust	\$4,055
Rangi Ruru Girls School	\$10,000
Rangiora Boxing Club Inc	\$16,523
Rangiora High School	\$5,230
Rangiora Promotions Assn Inc	\$14,000
Reap Marlborough	\$10,000
Reefton Area School	\$7,000
Reefton Jockey Club Inc	\$2,000
Reefton Trotting Club Inc	\$10,000
Renwick Bowling Club Inc	\$8,325
Renwick Cricket Club Inc	\$9,000
Renwick Rugby Football Club Inc	\$19,837
Renwick School	\$10,000
Renwick Tennis Club Inc	\$7,410
Riccarton High School	\$3,000
Riccarton Leagues Club Inc	\$5,930
Run Timaru Inc	\$2,040
S A N Z - Churchward Park Scout Group	\$6,273
Save The Otago Peninsula Inc Soc	\$5,300
SCAPE Public Art Trust	\$45,000
School Sport Canterbury Inc	\$6,491
Scottish Soc of N Z Pipe Band Inc	\$4,000
Seabrook McKenzie Trust for Specific Learning Disabilities	\$10,000
Seido Karate Hokitika Inc	\$5,000
Selwyn Sports Trust	\$2,504
Sharyn Anderton	\$5,000
Shirley Rugby Football Club Inc	\$4,875
Shirley Rugby Football Club Inc	\$1,000
Shirley Tennis Club Inc	\$4,559
Snow Sports N Z Inc	\$15,000
Soc of St Vincent De Paul Central Council of Canterbury	\$35,000
South Brighton Surf Life Saving Club Inc	\$10,485
South Canterbury Hospice Inc	\$15,000
South Island Secondary Schools Netball Assn Inc	\$12,000
South Pacific Rugby League & Sports Club Inc	\$8,000
South Westland Rugby Football Club Inc	\$20,000
Southbridge Rugby Football Club	\$3,000
Southbrook Community Sports Club Inc	\$30,744
Southbrook School	\$15,000
Southern Ballet Theatre Trust	\$6,000
Southern Disability Trust	\$4,000
Southern Districts Cricket Club Inc	\$2,000
Southern Hearing Charitable Trust	\$70,000
Southern Lakes Arts Festival Trust	\$3,839



Southern Hearing Charitable Trust

Sadie & Benji are brother and sister from Taranaki. Both born profoundly deaf, the siblings enjoy all the things their peers do – thanks to cochlear implants. Through the generosity of The Lion Foundation, we are able to support children and adults in the Southern regions of NZ. The grant received from The Lion Foundation means that we give people more than their hearing – we give them hope.

Southern Regions Branch of the Muscular Dystrophy Assn of N Z Inc	\$8,000	St Marys Primary School - Hokitika	\$15,000
Southern United FC Inc	\$45,000	St Marys Primary School - Hokitika	\$2,698
Southern Zone Deaf Rugby Union Inc	\$1,300	St Paul's Indoor Bowling (Dallington) Club Inc	\$2,000
Southern Zone of NZRL Inc	\$20,000	St Thomas of Canterbury College	\$6,000
Southerncross Cyclocross Club	\$15,000	Standardbred Stable to Stirrup Charitable Trust	\$2,100
Southland Otago Axemens Centre	\$2,000	Standardbred Stable to Stirrup Charitable Trust	\$4,000
Southland Social Studies Fair Soc Inc	\$1,000	Stopping Violence Services (Christchurch) Inc	\$5,000
Southland Youth One Stop Shop Trust	\$2,174	Straight Up Trust	\$477
SPAN Charitable Trust (t/a SkillWise)	\$5,000	Strengthening Linwood Youth Trust	\$5,000
Special Olympics Marlborough	\$4,800	Sumner Lifeboat Institution Inc	\$15,000
Special Olympics Nelson	\$15,000	Super Grans Dunedin Charitable Trust	\$8,000
Special Olympics Otago	\$2,500	Surf Life Saving N Z Inc - Southern	\$60,000
Sport Administration Espirit Inc	\$1,500	Swimming Nelson Marlborough Inc	\$13,000
Sport Otago	\$25,000	Table Tennis Canterbury Inc	\$10,000
Springston Rugby Club Inc	\$12,500	Tahuna Normal Intermediate School	\$25,000
St Albans Shirley Football Club Inc	\$8,000	Tahunanui School	\$5,000
St Albans Tennis Club Inc	\$2,000	Taieri Rugby Football Club Inc	\$20,000
St Andrews Presbyterian Church Blenheim	\$5,000	Tasman Bays Heritage Trust Inc	\$1,921
St Brigids School (Tainui)	\$20,000	Tasman Regional Sports Trust	\$32,000
St Clair Golf Club Inc	\$10,000	Tasman Rugby Union Inc	\$200,000
St Kilda Brass Inc	\$6,000	Tasman Volleyball Assn Inc	\$7,000
St Kilda Life Saving Club 1939 Inc	\$7,650	Te Ataarangi Ki Te Taihū O Te Waka-A-Maui Inc	\$2,000
St Martins Bowls Inc	\$5,000		
St Marys Preschool	\$28,135		

THE LION FOUNDATION

Southern

Grants Distributed 1 April 2021 – 31 March 2022 (excluding grant refunds)
Grant Payment 14 April 2022 – refer Note 7 to Financial Statements



Te Kura O Take Karara	\$20,000
Te Ora Hou Otautahi Inc	\$6,000
Tennis Canterbury Region Inc	\$10,000
Tennis Otago Inc	\$10,000
The Brain Injury Assn (Otago) Inc	\$23,995
The Piano - Centre for Music & the Arts	\$8,500
The Pukeko Centre Inc	\$50,000
Theatre Royal Charitable Foundation	\$25,000
Timaru Golf Club Inc.	\$10,000
Timaru Squash Rackets Club Inc	\$5,103
Timaru Squash Rackets Club Inc	\$7,673
Top Dog Theatre Inc	\$4,000
Top of the South Neighbourhood Support Charitable Trust	\$3,642
Twelve Oaks Golf Club	\$8,000
Union Rowing Club Inc	\$12,500
United Basketball Club Inc	\$5,000
University Grange Cricket Club	\$2,000
University of Canterbury Rugby Football Club Inc	\$5,000
University of Otago Physical Education Netball Club Inc	\$3,000
University of Otago Rugby Inc	\$10,000
Upper Clutha Softball Club	\$925
Upper Clutha Tracks Trust	\$19,050
Victory Primary School	\$23,383
Villa Maria College	\$4,000
Vipers Sports Club Inc	\$3,473
Volleyball Motueka - Golden Bay	\$4,000
Waimai United Hockey Club (2014) Inc	\$4,000
Waimairi Beach Golf Club Incorporated	\$4,000
Waimakariri United Football Club Inc	\$20,000
Waimate Cricket Club Inc	\$3,048
Waimate Croquet Club Inc	\$2,700
Waimate Golf Club Inc	\$20,000
Waimate Pottery Group Inc	\$575
Waimate Rugby Football Club Inc	\$6,565
Waimate Shears N Z Spring Shearing Championships Inc	\$14,459
Waimate Theatre Company Inc	\$5,425
Waimate Trotting Club Inc	\$15,000
Waimea College	\$3,000
Wairau Cricket Club	\$5,000
Waitaha School	\$1,000
Waituna Creek School	\$872
Wakari School	\$15,000
Wakatu Cricket Club Inc	\$11,373
Wanaka Arts Soc Inc	\$5,147
Wanaka Biathlon Club Incorporated	\$4,000

Wanaka Community House Charitable Trust	\$20,000
Wanaka Golf Club Inc	\$15,000
Wanaka Gun Club Inc	\$10,000
Wanaka Preschool Early Childhood Centre Inc	\$2,400
Wanaka Riding for the Disabled Inc.	\$3,000
Wanaka Rowing Club Inc	\$8,000
Wanaka Search & Rescue Inc	\$19,112
Wanaka Swim Club Inc	\$10,000
Wanaka Waterski Club Inc	\$2,003
Warbirds over Wanaka Community Trust Board	\$30,000
West Coast Badminton Assn	\$4,000
West Coast Badminton Assn	\$3,000
West Coast Cricket Assn Inc	\$10,000
West Coast Rugby Football Union Inc	\$15,000
West Coast Wilderness Trail Trust	\$10,000
West Coast Wilderness Trail Trust	\$3,000
West Melton Rugby Football Club Inc	\$2,000
West Melton School	\$3,050
Westburn School	\$4,000
Westland High School	\$35,000
Whakatou Group Riding for the Disabled Inc	\$7,500
Whakatou Te Korowai Manaakitanga Trust	\$15,000
Wharenui Gators Inc	\$6,000
Wharenui School	\$5,000
Wilderness Canoe Trust	\$2,500
Wingatui Community Hall Soc Inc	\$5,500
Womens Centre Inc	\$5,000
Woodend Bowling Club Inc	\$3,530
Woolston Brass Inc	\$2,000
WORD Christchurch	\$2,000
YMCA Arts Trust Christchurch	\$2,500
Youth Alive Trust	\$6,488
Youthline Otago Inc	\$1,818
Youthline Southland Inc	\$2,000
Zingari Richmond Football Club Inc	\$29,282

\$6,054,170

Braided Rivers Community Trust (Ashburton)

Age Concern Ashburton Inc	\$1,781
Allenton Rugby Football Club Inc	\$70,000
Ashburton A & P Assn	\$30,000
Ashburton Aquatic Park Charitable Trust	\$25,000
Ashburton Art Gallery Inc	\$5,050

Ashburton Bowling Club Inc	\$3,500
Ashburton Bridge Club Inc	\$10,000
Ashburton College	\$38,741
Ashburton Community Alcohol & Drug Service Inc	\$20,000
Ashburton District Neighbourhood Support Inc	\$8,000
Ashburton Harness Racing Museum Charitable Trust	\$2,900
Ashburton Learning Centre Inc	\$38,000
Ashburton Multi Cultural Trust	\$15,000
Ashburton Netherby School	\$18,000
Ashburton Operatic Soc Inc	\$20,000
Ashburton Parents Centre Inc	\$15,000
Ashburton Pony Club Mill Creek Branch	\$3,150
Ashburton Racing Club Inc	\$29,318
Ashburton Railway & Preservation Soc Inc	\$33,000
Ashburton Senior Citizens Inc	\$30,000
Ashburton Showjumping & Showhunter	\$9,000
Ashburton Swim Team Inc	\$30,000
Ashburton Town Watch Soc Inc	\$9,000
Ashburton Toy Library Inc	\$7,000
Ashburton Youth Cafe Charitable Trust	\$9,000
Birthright Canterbury Trust - Ashburton branch	\$16,000
Cancer Soc of N Z Inc - Canterbury West Coast Division	\$4,986
CanInspire Charitable Trust	\$10,000
Canterbury West Coast Sports Trust - Mid-Canterbury	\$40,000
Chris Ruth Centre Trust	\$14,000
Christchurch Disc Golf Club Inc	\$15,000
Coronation Target Shooting Club Inc	\$2,000
Dorie Preschool Trust	\$15,000
Dorie School	\$5,000
Family Help Trust Inc	\$20,000
Hakateru Ceramics & Pottery Ashburton Inc	\$3,000
Hampstead Rugby & Allsports Club Inc	\$12,000
Hampstead School - Ashburton	\$30,000
Hinds School	\$45,000
Kai for Kids Charitable Trust	\$20,000
Life Education Trust - Mid & South Canterbury	\$15,000
Mid Canterbury Childrens Trust Board	\$10,000
Mid Canterbury Cricket Assn Inc	\$45,000
Mid Canterbury Football Assn Inc	\$35,000
Mid Canterbury Group Riding for the Disabled Assn Inc	\$15,000

THE LION FOUNDATION



Southern

Grants Distributed 1 April 2021 – 31 March 2022 (excluding grant refunds)
Grant Payment 14 April 2022 – refer Note 7 to Financial Statements

Mid Canterbury Hockey Inc	\$35,000
Mid Canterbury Netball Inc	\$60,000
Mid Canterbury Rugby Union Inc	\$40,000
Mid Canterbury Youth Charitable Trust	\$18,000
Mid-Canterbury Childrens Theatre Inc	\$20,000
Mid-Canterbury Emergency Relief Charitable Trust	\$10,000
Mount Hutt College	\$8,000
Mountain Bike Ashburton Inc	\$15,000
Mt Somers Walkways Soc Inc	\$75,000
Rakaia Community Assn Inc	\$21,037
Rotary Club of Ashburton Plains Inc	\$5,000
Rotary Club of Ashburton Plains Inc	\$4,200
Staveley Hall Society Inc	\$150,000
Tennis Mid Canterbury Sub Assn Inc	\$30,000
Tinwald Golf Club Inc	\$10,000
Tinwald School	\$30,000
Trotts Community Gardens Charitable Trust	\$100,000
Waireka Croquet Club Inc	\$5,000
Water Ski Lake Hood Inc	\$13,185
Youth Institute of Ashburton District Charitable Trust Inc	\$7,000
Zonta Club of Ashburton Charitable Trust	\$3,882

\$1,512,730

Grant Payment 14 April 2022

Allenton Rugby Football Club Inc	\$3,000
Ashburton Indoor Bowls Assn Inc	\$7,287
Ashburton Performing Arts Theatre Trust	\$30,000
Ashburton Seniors Centre Trust	\$12,000
Digital Waitaha	\$15,000
Mid Canterbury Rugby Union Inc	\$80,000
Rakaia Swimming Club Inc	\$4,135
Royal N Z Plunket Trust - Mid Canterbury	\$34,988

\$186,410

Oamaru Licensing Trust

Ardgowan School	\$7,248
Blue Light Ventures Inc - Oamaru	\$1,275
Cancer Soc of N Z - Otago & Southland Division Inc - Oamaru	\$15,000
CCS Disability Action Waitaki Inc	\$2,400
Excelsior Rugby & Associated Sports Club (Oamaru) Inc	\$16,000
Janet Frame Eden Street Trust	\$6,088
Maheno School	\$2,447
Musical Theatre Oamaru Inc	\$2,567
North Otago Cricket Assn Inc	\$20,000
North Otago Golf Club Inc	\$12,719
North Otago Golf Club Inc	\$7,500
North Otago Lawn Tennis Assn Inc	\$688

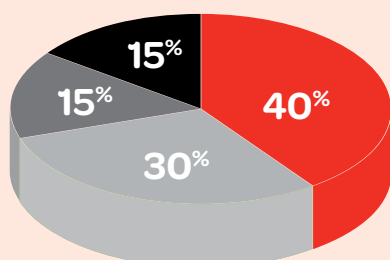
North Otago Sports Bodies Assn Inc	\$1,000
North Otago Toy Library Inc	\$7,811
Oamaru Combined Churches Christmas Parcels Trust	\$2,000
Oamaru Free Kindergarten Assn Inc	\$18,050
Oamaru Rowing Club Inc	\$12,655
Old Boys Netball Oamaru Inc	\$4,000
Pathfinders Gymnastics Club	\$20,000
Special Olympics North Otago	\$3,000
Sport Otago - Waitaki	\$28,000
St Patrick's Parish Oamaru	\$21,000
Volunteer South Trust Kaituao o te Taitonga	\$4,000
Waitaki Boys High School	\$9,318
Waitaki Community Recreation Centre Trust	\$25,000
Waitaki District Council	\$30,000
Waitaki District Health Services Ltd	\$47,749
Waitaki Girls High School	\$25,000
Waitaki Resource Recovery Trust	\$20,000
Waitaki Valley Preschool Inc	\$10,000
Waitaki Whitestone Geopark Trust	\$4,020
Weston School	\$1,515
Weston School	\$2,044
Whalan Lodge Trust	\$2,086

\$392,180

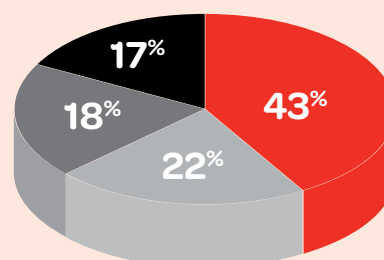
THE LION FOUNDATION TOTAL GRANTS 2021/2022:

\$33,339,279

(excluding grant refunds)



Target %



Actual %

● Sport ● Community, Culture, Arts ● Health ● Education



Summary Statement of Comprehensive Income

For the Year Ended 31 March 2022

	2022 NZ\$	2021 NZ\$
Revenue	79,160,115	79,564,770
Interest Received	9,328	5,965
Gain on Sale of Property, Plant and Equipment	386,720	93,624
Non-Exchange Revenue	44,218	174,390
Total Income	79,600,381	79,838,749
Less Expenditure:		
Gaming Machine Duty	(18,206,827)	(18,299,897)
Venue Payments	(12,623,667)	(12,704,771)
Compliance and Regulatory Costs	(3,213,049)	(3,080,801)
Depreciation - Property, Plant and Equipment	(6,717,210)	(5,854,541)
Machine/Equipment Related Costs	(3,093,902)	(2,802,091)
Interest Costs	-	-
Employee Costs	(4,551,958)	(4,461,614)
Other Costs	(1,090,959)	(1,023,240)
Net Profit Available for Distribution	30,102,809	31,611,794
Funds Distributed	(29,648,214)	(35,078,919)
Funds Distribution Expense	(3,691,065)	-
Grants Refunded	1,527,100	1,587,220
Net Profit/(Loss) for the Year	(1,709,370)	(1,879,905)
Other Comprehensive Income	-	-
Total Comprehensive Income/Loss for the Year	(1,709,370)	(1,879,905)

Summary Statement of Changes in Undistributed Surplus

	2022 NZ\$	2021 NZ\$
Undistributed Surplus as at Beginning of Year	13,724,565	15,604,470
Total Comprehensive Income for the Year	(1,709,370)	(1,879,905)
Undistributed Surplus as at End of Year	12,015,195	13,724,565



Summary Balance Sheet

	2022 NZ\$	2021 NZ\$
Current Assets	6,962,970	8,756,451
Non-Current Assets	14,008,688	12,090,466
Total Assets	20,971,657	20,846,917
Current Liabilities	(8,956,462)	(7,122,352)
Non-Current Liabilities	-	-
Total Liabilities	(8,956,462)	(7,122,352)
Net Assets	12,015,195	13,724,565
Represented by:		
Undistributed Surplus	12,015,195	13,724,565

Summary Cash Flow Statement

	2022 NZ\$	2021 NZ\$
Net Cash Inflow from Operating Activities	6,165,108	6,617,997
Net Cash Outflow from Investing Activities	(8,242,276)	(10,517,343)
Net Cash Outflow from Financing Activities	-	-
Net Cash Inflow/(outflow) from Operating, Investing & Financing Activities	(2,077,168)	(3,899,346)
Add: Cash at bank at 1 April	7,697,835	11,597,181
Ending Cash Carried Forward	5,620,667	7,697,835
Cash and Cash Equivalents	5,620,417	7,697,585
Petty Cash	250	250
	5,620,667	7,697,835



1. The information set out in these Summary Financial Statements has been prepared in compliance with PBE FRS 43: Summary Financial Statements, and extracted from the Annual Financial Statements of The Lion Foundation 2008 for the year ended 31 March 2022. The annual Financial Statements authorised for issue on 27/06/2022 have been prepared to comply with Not-For-Profit Public Benefit Entity Standards (NFP PBE Standards). The annual Financial Statements include a statement of compliance with NFP PBE Standards for each period presented in the annual financial statements.
2. Because of their summary nature, these Financial Statements cannot provide a full understanding of the financial performance, financial position, and cash flows of The Lion Foundation 2008. This understanding can only be obtained by reference to the Annual Financial Statements of The Lion Foundation 2008.
3. A copy of the full audited Annual Financial Statements can be requested from:
Chief Financial Officer
The Lion Foundation 2008
Private Bag 106605
Auckland Central
Auckland 1010
4. The Trustees authorised the Publication of these Summary Financial Statements on 27/06/2022.
5. The presentation currency is New Zealand Dollars (NZD).
6. The Annual Financial Statements of The Lion Foundation 2008 for the year ended 31 March 2022 has been audited with an unmodified audit opinion issued on 27/06/2022.
7. As at 31 March 2022, The Lion Foundation 2008 had distributed 35% (\$28,121,114) of its gross proceeds from Class 4 gambling activities. Per Regulation 10 of the Gambling (Class 4 Net Proceeds) Regulations 2004 (the 'Regulations') 40% of gross proceeds must be distributed therefore the Foundation has accrued a provision of \$3,691,065 for the shortfall regulatory obligation. Distributions paid on 14 April 2022 were sufficient to settle this obligation and were distributed within 3 months of balance date as required by the Regulations.
8. The financial statements are prepared on a going concern basis despite the impact that Covid-19 had on operations in the current and preceding periods. Government responses to the pandemic under the Covid-19 Protection Framework in the current and prior financial period resulted in venues being unable to operate or required to operate under restricted capacity levels for extended periods resulting in reduced revenues compared to pre-Covid levels. The Foundation reported a profit before distributions of \$30,102,809 and positive cash flows from operating activities of \$6,165,108 but a loss after distributions paid and accrued of \$1,709,370 and negative working capital of \$1,993,493, whilst in the prior year regulatory concessions were made available in respect of the minimum distribution requirements as a Covid relief measure, no such regulatory relief was provided for the current period. Notwithstanding these impacts and the continued inherent uncertainty in forecasting the impact of Covid on revenues the Trustees are satisfied that the going concern assumption is appropriate and not subject to material uncertainty. In making this assessment Trustees considered forecast cash flows including the ability to continue to defer the timing of regulated grant distributions of gross gaming proceeds up to 3 months post balance date and the reduced reliance on lockdowns by the government in its Covid response.

Approved on behalf of the Board:

Trustee

27 June 2022

Trustee

27 June 2022



Independent Auditor's Report on the Summary Financial Statements

To the Trustees of The Lion Foundation 2008

Opinion

The summary financial statements of The Lion Foundation 2008 (the 'entity'), which comprise the summary balance sheet as at 31 March 2022, and the summary statement of comprehensive income, summary statement of changes in undistributed surplus and summary cash flow statement for the year then ended, and related notes, are derived from the audited financial statements of the entity for the year ended 31 March 2022.

In our opinion, the accompanying summary financial statements, on pages 1 to 2, are consistent, in all material respects, with the audited financial statements, in accordance with PBE FRS 43: *Summary Financial Statements* issued by the New Zealand Accounting Standards Board.

Summary financial statements

The summary financial statements do not contain all the disclosures required by Public Benefit Entity Standards. Reading the summary financial statements and the auditor's report thereon, therefore, is not a substitute for reading the audited financial statements and the auditor's report.

The audited financial statements and our report thereon

We expressed an unmodified audit opinion on the audited financial statements in our report dated 27 June 2022.

Trustee's responsibilities for the summary financial statements

The Trustees are responsible on behalf of the entity for the preparation of the summary financial statements in accordance with PBE FRS 43: *Summary Financial Statements*.

Auditor's responsibilities

Our responsibility is to express an opinion on whether the summary financial statements are consistent, in all material respects, with the audited financial statements based on our procedures, which were conducted in accordance with International Standard on Auditing (New Zealand) 810 (Revised): *Engagements to Report on Summary Financial Statements ('ISA (NZ) 810')*.

Other than in our capacity as auditor, we have no relationship with or interests in the entity, except that partners and employees of our firm deal with the entity on normal terms within the ordinary course of trading activities of the business of the entity.

Deloitte refers to one or more of Deloitte Touche Tohmatsu Limited ("DTTL"), its global network of member firms, and their related entities (collectively, the "Deloitte organisation"). DTTL (also referred to as "Deloitte Global") and each of its member firms and related entities are legally separate and independent entities, which cannot obligate or bind each other in respect of third parties. DTTL and each DTTL member firm and related entity is liable only for its own acts and omissions, and not those of each other. DTTL does not provide services to clients. Please see www.deloitte.com/about to learn more. Deloitte Asia Pacific Limited is a company limited by guarantee and a member firm of DTTL. Members of Deloitte Asia Pacific Limited and their related entities, each of which are separate and independent legal entities, provide services from more than 100 cities across the region, including Auckland, Bangkok, Beijing, Hanoi, Hong Kong, Jakarta, Kuala Lumpur, Manila, Melbourne, Osaka, Seoul, Shanghai, Singapore, Sydney, Taipei and Tokyo.



Deloitte.

Restriction on use

This report is made solely to the Trustees, as a body, in accordance with Section 26 of the Trust Deed. Our audit has been undertaken so that we might state to the Trustees those matters we are required to state to them in an auditor's report and for no other purpose. To the fullest extent permitted by law, we do not accept or assume responsibility to anyone other than the Trustees as a body, for our audit work, for this report, or for the opinions we have formed.

Deloitte Limited

**Auckland, New Zealand
27 June 2022**

This audit report relates to the summary financial statements of The Lion Foundation 2008 (the 'entity') for the year ended 31 March 2022 included on the Entity's website. The Trustees are responsible for the maintenance and integrity of the entity's website. We have not been engaged to report on the integrity of the Entity's website. We accept no responsibility for any changes that may have occurred to the summary financial statements since they were initially presented on the website. The audit report refers only to the summary financial statements named above. It does not provide an opinion on any other information which may have been hyperlinked to/from these summary financial statements. If readers of this report are concerned with the inherent risks arising from electronic data communication they should refer to the published hard copy of the summary financial statements and related audit report dated 27 June 2022 to confirm the information included in the summary financial statements presented on this website.